



Fife College



FIFE'S  
COMMUNITY  
COLLEGE 



# PROSPECTUS

## 2026/27



## PAGE

3	Welcome to Fife College
4	About Us
6	What We Offer
8	Our Campuses
10	10 Reasons to Study at Fife College
12	Studying with us
16	Degree Pathways
20	Qualifications Explained
24	How to Apply
25	Our Promise to You

## Our Courses

28	Access to College
32	Accounting, Legal and Police Studies
36	Art, Design and the Built Environment
40	Business, Enterprise, Administration, and IT
44	Childhood Studies
48	Computing and Digital Technologies
52	Construction and Building Services
56	Culinary Arts and Hospitality
60	Engineering and Energy
66	English for Speakers of Other Languages (ESOL)
70	Hair, Beauty and Make-Up
74	Health Care, Wellbeing and Counselling
78	Local Outreach Learning
80	Media and Sound Productions
84	Performing Arts
88	Science and Maths
92	Social Sciences
96	Sport and Fitness
100	Supported Learning
104	Travel and Tourism
110	Support Services
112	Funding Your Studies
114	Scholarships
115	Students' Association
116	Index

The information published in this guide was correct at the time of print. For the most up-to-date information, you should always check our website.

Published December 2025  
Fife College is a registered Scottish charity (No. SCO21203)



# HELLO

Whether you are leaving school, returning to education, or looking to progress your career with additional skills and qualifications, we are so delighted that you are considering joining us!

We continue to work with leading employers – from Scottish Gas Network and Shell to UK Space Agency, as well as the NHS and other major organisations – to deliver pioneering training programmes in Fife. You could benefit from the UK's first-ever hydrogen energy training facility for registered gas engineers, a cutting-edge energy transition skills hub, and our award-winning sector-leading geospatial skills training.

Our wide range of courses offer the flexibility to fit your studies around a busy home or work life, along with the added benefits of small class sizes, expert teaching, and fantastic links with dozens of local employers.

As one of our students, you will be central to everything we do. We deliver outstanding technical and professional education, closely matched to local industry demand and economic need.

Record numbers of our students go on to employment or further study after successfully completing their studies with us – we hope you will join them on the path to a rewarding and successful future!

Now that we've moved into our brand-new, state-of-the-art Dunfermline City Campus, it's an incredibly exciting time to join Fife College. Our modern campus offers exceptional facilities and a vibrant learning environment to help you thrive.

I hope you enjoy browsing all the information in this prospectus, and I look forward to welcoming you as one of our students in 2026!

Jim Metcalfe  
Principal



# ABOUT US

- Home to over 18,000 students and 800 staff
- Our five campuses sit at the heart of the Kingdom – Dunfermline, Kirkcaldy, Glenrothes, Levenmouth and Rosyth
- We've got options for everyone – from starter courses and apprenticeships, through to HNC/HND and degree pathways, all with the flexibility of study to suit your needs
- 96% of our students enjoyed their time with us so much that they said they would recommend us to others
- We offer over 600 progression routes to a degree through our partnerships with universities all over the country
- Our Dunfermline, Kirkcaldy and Glenrothes campuses each act as hubs for degree-level learning, offering the resources, support, and expertise you need to progress
- Due to our strong links with local industries, we offer one of the biggest Modern Apprenticeship programmes across the Scottish college network, with more than 1,200 apprentices earning and learning with us in 2025/26
- Our professional qualifications and training courses in business, management and leadership are accredited by leading professional institutions
- Last year alone, over 200 of our students benefitted from our Adam Smith Scholarship awards



# WHAT WE OFFER

COMMERCIAL  
TRAINING  
COURSES



ONLINE  
COURSES



400  
FULL-TIME  
AND PART-TIME  
COURSES

DEGREE  
COURSES AND  
600  
UNIVERSITY  
PATHWAYS

PROFESSIONAL  
QUALIFICATIONS



STUDENT  
SCHOLARSHIPS



INDUSTRY  
STANDARD  
EQUIPMENT



MODERN AND  
FOUNDATION  
APPRENTICESHIPS



LINKS WITH  
LOCAL  
INDUSTRY



SCHOOL COLLEGE  
PARTNERSHIP  
PROGRAMME



EMPLOYER  
ADVICE FOR  
TRAINING AND  
FUNDING



CONFERENCE AND  
EVENTS CENTRE



# OUR CAMPUSES

We are dedicated and committed to making your learning experience with us as meaningful as possible, which is why we continue to invest in providing innovative and inspiring campuses for you to learn and upskill within your industry throughout your career. Here's just a selection of the fantastic facilities we have on offer for our students at our five campuses across Fife:

## 1 Dunfermline

Our new state-of-the-art campus for Dunfermline houses:

- Our Media Centre, including photography studios and gaming studios
- A variety of construction, gas and engineering workshops
- Science labs
- Hair and beauty salons
- Training kitchens and student-run restaurant, The Academy
- Fully equipped gym and games hall
- As well as being the home to our Carnegie Conference and Events Centre.

## 2 Kirkcaldy

Located at St Brycedale, our Kirkcaldy campus is home to:

- Business, events and tourism facilities
- Culinary arts, including state-of-the-art kitchens and our student-run restaurant, The Academy
- Our games hall and fully equipped gym
- Hair and beauty salons
- As well as a fully functioning theatre for our performing arts courses.

## 3 Glenrothes

Based at Stenton, our Glenrothes campus plays host to:

- Our Media Production Hub, plus professionally equipped studios and edit suites for sound, radio and screen production
- Training facilities for health, social care and childhood studies
- Jewellery workshops
- And a host of industry-spec construction, engineering and science labs.

## 4 Rosyth

Our campus at Rosyth hosts:

- Engineering facilities
- New independent learning spaces
- The Shell Energy Transition Skills Hub
- A Nanogrid facility
- As well as increasingly catering for the digital and advanced manufacturing skills required to meet the needs of the Fife workforce.

## 5 Levenmouth

- Care facilities, to train our next generation of "front-line heroes"
- A Hydrogen training facility in partnership with SGN
- Hair and beauty salons
- State-of-the-art kitchens
- As well as a Digital Skills Hub, and a Geospatial Skills Hub.



# 10

## 10 reasons to choose us

- 1 Fantastic range of courses**  
We offer over 400 courses across 40 different subject areas, so we're confident we've got something to suit your needs.
- 2 Superb facilities**  
Our first-rate facilities include fully kitted-out construction and engineering workshops, a media production hub, state-of-the-art training kitchens and customer-facing student-run restaurants, a recording studio, radio station, stage theatres, digital and computing labs, hair, beauty and make-up salons and even our own aircraft cabin!
- 3 Flexible learning options**  
Full-time study not an option? No problem! Our flexible study options (including online courses) help thousands of students every year to fit studying around their work and family commitments.
- 4 Strong links with local industry**  
We are located right in the heart of some of Scotland's fastest growing industries and where loads of exciting employment opportunities are emerging. We work closely with local industry to ensure our courses provide our students with the knowledge, skills and experiences they are looking for, both now and in the future.
- 5 Real-life learning environments**  
From industry-standard engineering equipment, real-life training kitchens and customer restaurants to fully kitted-out care suites and media production hubs, we provide real-life learning environments to put your skills training into practice and prepare you for life after college.
- 6 Clear pathways to employment**  
An impressive 92% of our students progress to either employment or further study after completing their courses with us – one of the highest rates in Scotland.
- 7 University progression routes**  
More and more students are choosing an alternative route to university. Instead of committing to 3 or 4 years away in a new city, you can start studying locally with all the flexibility and affordability benefits that brings. With over 600 progression routes in place with university partners, progression on to Year 2 or Year 3 of a university degree after studying your HNC or HND with us couldn't be easier.
- 8 Excellent student support services**  
Our student support service teams – including health and wellbeing, guidance, inclusion and employability – are always happy to chat, listen and help to make your time at college as enjoyable and successful as possible.
- 9 Award-winning Students' Association**  
Fife College Students' Association (FCSA) is here to make sure you get the most out of college life, through events and initiatives supporting the positive health and wellbeing of all students.
- 10 ...and if you are still not convinced**  
Just ask our students! 96% of our full-time students studying with us in academic year 2025/26 think Fife College is helping them to achieve their goals and ambitions and 98% described our classes as welcoming, supportive, and friendly learning environments. Why go anywhere else?





# STUDYING WITH US



## YOUR STUDY OPTIONS

We have a wide range of study options at Fife College, giving you the flexibility and choice to fit your studies around work and life commitments. We have courses to fit all ages, and we cater for a variety of life stages – take a look at the options available (below) and see which one works best for you.

### School College Partnership (SCP)

You don't have to wait until you finish school to start thinking about what you want to do afterwards – you can get a head start on your future by studying one of our fantastic School College Partnership courses as part of your school timetable.

These courses are designed to help you develop the skills you'll need both for further study and for employment, and will help you become an independent, self-motivated, and creative critical thinker.

In many cases, signing up for an SCP course means you can study on a college campus where you'll experience college life, learn new skills in our state-of-the-art facilities, and study in vocational areas – like hospitality, digital, care, engineering, construction, and loads more.

All our courses are developed in line with universities and industry to ensure that you get the skills and qualifications you really need for your future career.

Visit [fife.ac.uk/schools](https://fife.ac.uk/schools)

### Foundation Apprenticeships (FAs)

If you're a Fife school pupil in S4 or above, you can kick-start your career path with a Level 4 to 6 Foundation Apprenticeship (FA).

This innovative pathway provides a winning combination of real-life work experience and learning the skills that employers want while gaining an industry-recognised qualification.

An FA at SCQF Level 6 is also a recognised entry requirement for a Modern Apprenticeship or degree-level study, so it can help you progress on to a career or further study.

We have Foundation Apprenticeships available in partnership with Fife Council and Skills Development Scotland (SDS), so you can choose from a range of practical courses, providing a pathway to careers in sectors such as creative and digital media, scientific technologies, engineering, accountancy and business skills.

Find out more at [fife.ac.uk/foundation](https://fife.ac.uk/foundation) or email the SCP and FA team directly at [scp@fife.ac.uk](mailto:scp@fife.ac.uk)

## YOUR STUDY OPTIONS

### Full-time study

Studying full-time is usually the quickest way for you to complete your qualification. It generally means you will attend college for 3-4 days a week, although this varies from course to course.

All our courses are designed to give you the best possible start to your chosen career – often including practical experience in your field.

Go to [fife.ac.uk/courses](https://fife.ac.uk/courses) for a full list of our available courses, or choose to browse by subject area.

### Part-time study

Not everyone is able to commit to full-time study. If you've got a busy life, with family and work commitments, it's not always easy to find the time.

That's why we offer a range of part-time courses that better fits around your lifestyle and helps you learn something new and get the skills you need for the job you want.

You can choose to study a range of courses, from introductory level to HNC/HNDs and degrees, on a part-time basis to fit your studies around your other commitments.

Whether day, evening, weekend, distance learning, online, or work-based learning suits you best, we are here to help you find the right option for you. Some courses are even available to apply for at any time of the year, so you can take that first step to your new career whenever you feel ready.

And with plenty of funding options available to you to support you with any costs, you will find that getting the qualification you need is within your reach!

Head to [fife.ac.uk/part-time](https://fife.ac.uk/part-time) for more information.

### Scottish Wider Access Programmes (SWAP)

SWAP courses are for adults who have few or no formal qualifications and who have been out of full-time education for at least three years.

SWAP courses are designed to give adult learners intensive academic preparation as well as the opportunity to develop the skills and confidence required to study at Higher Education level.

All our SWAP courses are studied full-time for one year and are designed to prepare you for entry into HNC/HND or degree study through recognised progression routes at Fife College, and at other colleges and universities across Scotland.

For more information about SWAP courses and to check your eligibility, please visit [swap-east.ed.ac.uk](https://swap-east.ed.ac.uk)

### Short-Term Online Courses

Throughout the year, we run a variety of short, online, flexible learning courses designed to help refine your core skills and also to learn new skills for specific industry sectors.

These courses are specifically designed to help you enhance your employability prospects and hopefully maximise your potential for career prospects and job opportunities.

Look out for our latest course offerings at [fife.ac.uk](https://fife.ac.uk)

### Modern Apprenticeships (MAs)

Modern Apprenticeships are the ideal way to get a job, get paid, and get qualified at the same time. You'll work towards a nationally recognised qualification while earning a salary and building the skills you need for the career you want.

We offer MAs across a wide range of industries, all designed with employers to make sure you're learning exactly what the sector needs. That's why our apprenticeships are so popular with businesses looking for enthusiastic talent.

You'll gain valuable, transferable skills and real on-the-job experience that looks great on your CV. Through our strong industry partnerships, you'll also benefit from hands-on opportunities and direct insight into real workplace environments.

Learn more at [fife.ac.uk/MAs](https://fife.ac.uk/MAs)

### Professional Qualifications

We offer an impressive portfolio of professional qualifications across a wide range of management and leadership disciplines accredited by leading professional institutions.

With qualifications ranging from certificate to postgraduate level, we are able to provide you with the opportunity to undertake a wide range of professional development qualifications essential for today's challenging business environment.

All our programmes are designed to offer current, contemporary qualifications with a practical focus. From Management and Leadership to Accounting, Human Resource Management and Project Management, our courses cover a wide range of specialisms for all sectors.

See [fife.ac.uk/professional](https://fife.ac.uk/professional) for more details.



# DEGREE PATHWAYS

## The flexible alternative to university, offering you the stepping stones to a degree

The higher education landscape has changed rapidly in recent years, with more and more students choosing to come to college to study for their higher education qualifications, including degrees.

At Fife College, we offer around 100 HNC and HND courses, with over 600 progression routes to degree courses both here at your local campus and at partner colleges and universities.

The benefits of taking the college route to a degree include:

- ➔ No need to commit to 3-4 years of study at university – take each year at a time
- ➔ Gain a recognised qualification for every year of study
- ➔ Study closer to home, keeping living, travel and study costs to a minimum
- ➔ Enjoy smaller, more focused class sizes than at university
- ➔ It's local, flexible, affordable... and enjoyable!

## DEGREE PATHWAYS

### Higher National Qualifications – HNCs/HNDs

HNCs and HNDs are the equivalent level to years 1 and 2 at university, respectively. But they mean you get to study in a more flexible way that suits you and your plans for the future.

One of the many great things about studying at Fife College is that you don't have to commit to three or four years of continuous study like you would at university. You can just take it year by year, and see how you get on.

Because you finish each year with an industry recognised qualification, you have a qualification that could take you straight into a job. Or you could go on to study for your ordinary degree or honours degree, with us or via one of our partner universities. Plus you have the flexibility to take a break and consider what to do next.

If you choose to study for your HNC and HND at Fife College and then progress onto a degree programme starting in year 2 or 3, you will still achieve the same degree or honours degree qualification as your friends who went straight to university to study from year 1.

But here at Fife College, you'll be able to study in a smaller class, allowing you to get more help and support from your lecturers. Because you'll be studying locally, you can keep your living, travel, and study costs down.

Plus, you may be able to study on a part-time basis, at evenings or weekends, if that's what fits in best with your life.

Find out more at [fife.ac.uk/degrees](https://fife.ac.uk/degrees)

### Going on to university

If you want to carry on with your studies, Fife College is the perfect stepping stone to university.

Where there is an articulation route in place, you can move from an HNC or HND to year 2 or 3 of a degree without having to re-learn the same things or repeat a year of study.

While you are at college you will get information from our partner universities, at events or through visiting speakers, to help you make an informed choice about the right course to move on to.

And you'll get the chance to develop all the independent study and research skills you'll need to thrive when you go to university.

### Study your full degree with us

Thanks to our close links with partner universities, you can study for a complete degree right here on your doorstep.

This means you can keep all of your costs down, but also benefit from using university facilities like libraries, open days, and even some lectures, and you'll get a fully accredited ordinary degree or honours degree awarded by the university at the end of your studies.



# 600

Over 600 routes to degree courses available

# 16

Degree partnerships  
with 16 universities  
and colleges

Who says you can't  
study towards a  
degree at college?  
We say you can!

# QUALIFICATIONS EXPLAINED

All you need to know about the different levels of qualifications on offer.

Like all Scottish universities and colleges, we use the Scottish Credit and Qualifications Framework (SCQF) levels to describe our courses. It shows how you can build up a series of points (known as "credit points") to gain the qualification you want, transfer these credits onto other courses, and compare levels across different courses and qualifications.

**Remember** – there's no one set or right way to progress through school, college, university and into the job you want. And one of the benefits of college is how flexible your route can be, with so many options available to suit your own circumstances. You can even take time out of your studies and pick them up again at a later stage.

## Further Education (FE) qualifications

### Certificate courses

*Broadly comparable to SCQF Level 4 – the equivalent level to National 4s*

Certificate courses are the perfect stepping stone for those with no or few formal qualifications. They are a cluster of units, mainly at SCQF Level 4, that will give you an appropriate set of skills and knowledge to progress on to the next SCQF level.

### Intermediate Certificate courses

*Broadly comparable to SCQF Level 5 – the equivalent level to National 5s*

Intermediate Certificate courses contain a cluster of units, mainly at SCQF Level 5, that will give you an appropriate set of skills and knowledge to progress to the next SCQF level.

### Advanced Certificate courses

*Broadly comparable to SCQF Level 6 – the equivalent level to Highers*

Advanced Certificate courses are a cluster of units, mainly at SCQF Level 6, that will give you an appropriate set of skills and knowledge to progress to the next SCQF level in your education or chosen career path.

*These courses are made up of a cluster of units and successful achievement of these will provide you with all the knowledge you need to progress to a higher level of course in your chosen subject area, or into your chosen career path. Many of these units are accredited by an awarding body and the course may even include a small group award (e.g. a National Progression Award) but they do not result in a large formal award like a National Certificate.*

### National Certificate courses

These courses hold a nationally recognised group award qualification at SCQF Levels 4, 5 or 6 and can be used as a stepping stone to employment or on to further study at a higher SCQF level.



Higher Education (HE) qualifications

Higher National Certificates (HNC)

SCQF Level 7 – the equivalent to year 1 at university.

HNCs are normally completed in one year full-time or in two years with part-time study. Upon successful completion of an HNC, you have options which may include progressing to an HND at Fife College, to a degree with one of our partner universities (often entering the degree course in year 2), or into employment.

Higher National Diplomas (HND)

SCQF Level 8 – the equivalent to year 2 at university.

An HND is two years of study if done as a full-time course. If you're progressing from HNC, you will go straight into the second and final year of the HND. It gives you the option of progressing through to a degree (often entering year 3 of the degree course) or into employment.

Degrees

SCQF Levels 9 (Degree) and 10 (Honours Degree).


As well as routes to a wide range of degree courses at other institutions, with the benefit of studying the first one or two years locally, by working alongside our partner universities, we offer a great range of degrees right on your doorstep at Fife College campuses, so that you can study your whole degree with us in Fife. These degrees are awarded by our university partners so are the same as those issued to their own students.

**Note:** An Honours degree in Scotland takes 4 years of full-time study to complete, but in the English system an Honours degree takes 3 years.

Glossary of other qualifications

- SVQ – Scottish Vocational Qualification
- NVQ – National Vocational Qualification
- National 4s, National 5s and Highers

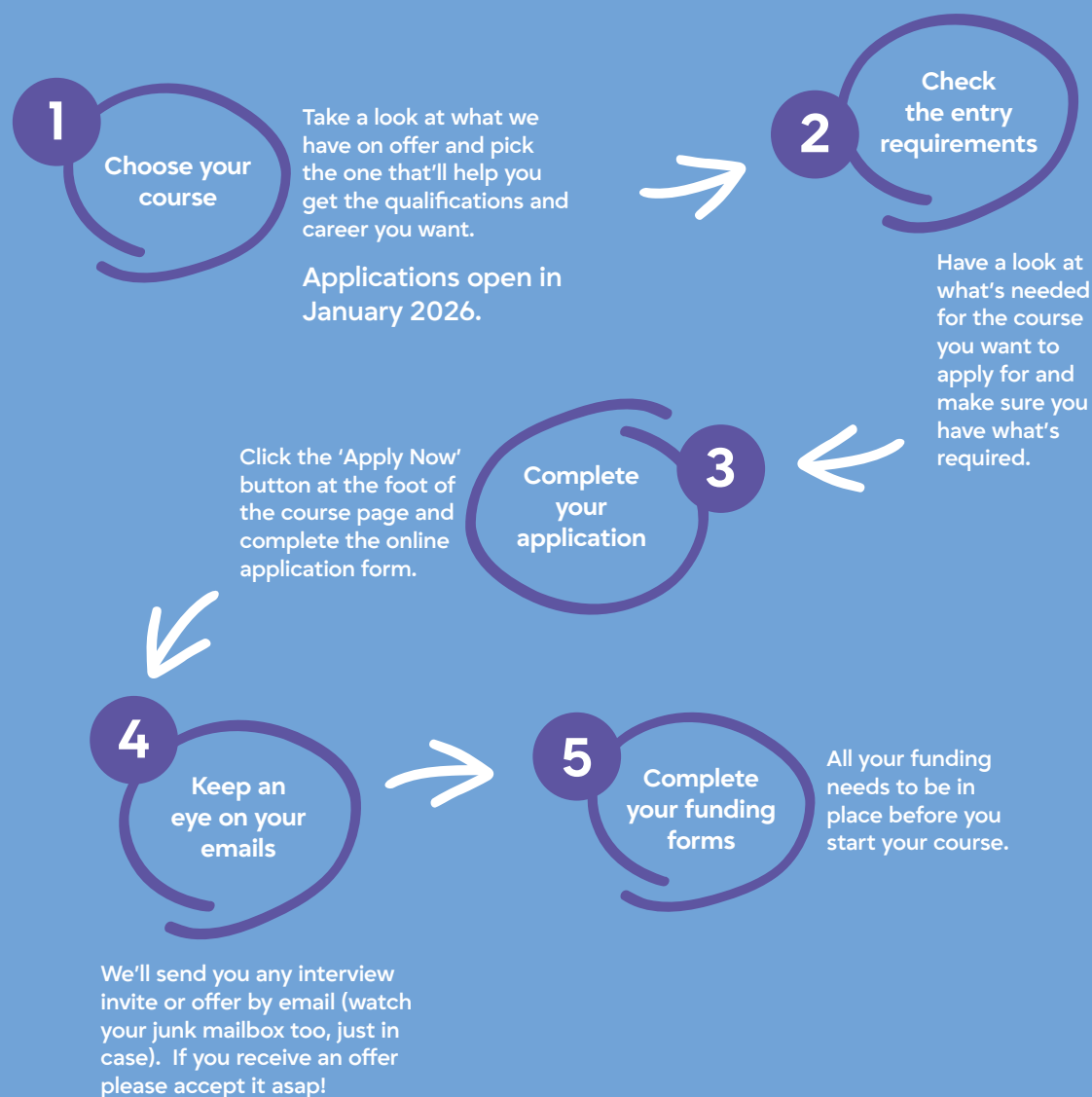
The Scottish Credit and Qualifications Framework

SCQF Levels	SQA Qualifications			Qualifications of Higher Education Institutions	Apprenticeships and SVQs
12	<div>For more information on the SCQF framework visit <a href="http://www.scqf.org.uk">www.scqf.org.uk</a></div>		Professional Development Award	Doctoral Degree	Professional Apprenticeship
11			Professional Development Award	Masters Degree, Integrated Masters Degree, Post Graduate Diploma, Post Graduate Certificate	Graduate Apprenticeship, Professional Apprenticeship, SVQ
10			Professional Development Award	Honours Degree, Graduate Diploma, Graduate Certificate	Graduate Apprenticeship, Professional Apprenticeship, SVQ
9			Professional Development Award	Bachelors/Ordinary Degree, Graduate Diploma, Graduate Certificate	Graduate Apprenticeship, Technical Apprenticeship, SVQ
8		Higher National Diploma, Advanced Diploma	Professional Development Award	Diploma Of Higher Education	Higher Apprenticeship, Technical Apprenticeship, SVQ
7	Advanced Higher, Awards, Scottish Baccalaureate	Higher National Certificate, Advanced Certificate	Professional Development Award	Certificate Of Higher Education	Modern Apprenticeship, SVQ
6	Higher, Awards, Skills for Work Higher	National Certificate	Professional Development Award National Progression Award		Modern Apprenticeship, Foundation Apprenticeship, SVQ
5	National 5, Awards, Skills for Work National 5	National Certificate	National Progression Award		Modern Apprenticeship, SVQ
4	National 4, Awards, Skills for Work National 4	National Certificate	National Progression Award		SVQ
3	National 3, Awards, Skills for Work National 3	National Certificate	National Progression Award		
2	National 2, Awards	National Certificate	National Progression Award		
1	National 1, Awards				



# HOW TO APPLY

Your step-by-step guide to applying for a course at Fife College.



## Hints and tips

We make it quick and easy to apply for the course you want. To help make sure you get on your course, here's a few dos and don'ts to remember.

**DO** be ready to get your application in. Once applications are open in January 2026, the sooner you apply the better your chance of getting on the course you want.

**DO** think about the course you want to do the most. You can apply for more than one course, but you can only accept one offer. And only one application will be progressed at any one time. So to give you the best chance of getting on the course you really want, have a think about which one is best suited to you and your plans for the future.

**DO** keep checking your emails. When you apply online, we'll keep in touch with you by email. But remember to check your junk email folder just in case our email has ended up there.

**DON'T** wait for all your exam results. Conditional offers for places can be given subject to you passing your exams, so you can apply before you get your results.

**DON'T** feel you need to do it all in one go. Once you've set up your login details, you can return to your application form at a later date. Just remember your username and password!

**DON'T** panic about interviews. This is also your chance to speak to course staff face-to-face and ask any questions you have.

## Need some help?

If in doubt...ask!

There are lot of options so take your time to decide. If you need a bit of help or advice, feel free to give us a call for a chat on **0344 248 0115** or email **info@fife.ac.uk**.

We will happily chat you through your options.

# PROMISE

## Our promise to you

We will guarantee an offer of a place to all eligible school leavers in the Fife region who submit an application by 31 March 2026.

We promise that we will help every school pupil who meets the minimum entry requirements to find a suitable course which suits their individual circumstances in order to help them achieve their potential.



# OUR COURSES

## CONTENTS

28	Access to College
32	Accounting, Legal and Police Studies
36	Art, Design and the Built Environment
40	Business, Enterprise, Administration, and IT
44	Childhood Studies
48	Computing and Digital Technologies
52	Construction and Building Services
56	Culinary Arts and Hospitality
60	Engineering and Energy
66	English for Speakers of Other Languages (ESOL)
70	Hair, Beauty and Make-Up
74	Health Care, Wellbeing and Counselling
78	Local Outreach Learning
80	Media and Sound Productions
84	Performing Arts
88	Science and Maths
92	Social Sciences
96	Sport and Fitness
100	Supported Learning
104	Travel and Tourism



# ACCESS TO COLLEGE

Whether you are looking to get that job you have always wanted, or those additional qualifications to fulfil your dream of studying towards a degree – we have the right course for you.

At Fife College we offer National 5s, Highers and Pathway courses which are designed to enable you to progress onto HNC, HND or degree-level study. What's more, our flexible study options mean you can study full-time or part-time and fit your studies around your other commitments no matter what stage in life you're at.

Visit [fife.ac.uk/access](https://fife.ac.uk/access) for more course details.



## STUDENT STORY



**Claire Carrington**  
SWAP – Access to Nursing

*"Coming back into education after almost 20 years was a big step for me, but the course strengthened my practical and academic abilities as well as my confidence. The SWAP Access to Nursing course has truly given me a solid foundation to move forward to the next step in my journey – studying mental health nursing at Abertay University."*

SCQF LEVEL	Access to College	Full-time	Part-time
5	Intermediate Certificate: Child, Health and Social Care	●	
5	Intermediate Certificate: Pathway to Social Sciences	●	
6	Advanced Certificate: Pathway to Social Sciences	●	
6	Advanced Certificate: SWAP Access to Health and Life Sciences	●	
6	Advanced Certificate: SWAP Access to Nursing	●	

Course listings are correct at time of printing, but may be subject to change. Please visit our website for the most up-to-date course information and campus locations.

Access to  
College Course  
Planner

Key:

Progression route  
.....➔

Academies/  
Community Classes

Double  
line box

College courses

Solid  
line box

School College  
Partnership courses

Filled  
in box

Courses share  
progression options

Dotted  
line box

This planner shows possible  
routes of progression. For full  
entry requirements for each  
course, always check online.

Equivalent to National 4s  
SCQF LEVEL  
4

Equivalent to National 5s  
SCQF LEVEL  
5

Equivalent to Highers  
SCQF LEVEL  
6

Equivalent to Year 1 at  
University and Advanced Highers  
SCQF LEVEL  
7

Equivalent to Year 2  
at University  
SCQF LEVEL  
8

Equivalent to Year 3  
at University  
SCQF LEVEL  
9

Equivalent to Year 4  
(Honours) at University  
SCQF LEVEL  
10

Intermediate  
Certificate: Child,  
Health and Social  
Care

Intermediate  
Certificate: Pathway  
to Social Sciences



Advanced Certificate:  
Pathway to Social  
Sciences

Advanced Certificate:  
SWAP Access to  
Health and Life  
Sciences

Advanced Certificate:  
SWAP Access to  
Nursing

Wide range of  
HNC courses



Wide range of  
degrees in SWAP  
East (college  
and university  
partnership)

Articulation to university

Fife College offers over 600 routes to a degree in partnership with a wide range of universities across Scotland and the UK.

These articulation routes, which are pathways between a full-time HNC or HND course to a degree course, are formally agreed between the College and the university to ensure a smooth transition to degree study.

This means that you could gain direct entry to year 2 at university from an HNC, and with an HND you could move straight to year 3.

Visit the degree pathways pages section of our website for further information.

# ACCOUNTING, LEGAL AND POLICE STUDIES

The skills you learn at Fife College will prepare you for all kinds of careers in Accounting, Legal Services and Policing. Talented individuals, who are skilled and knowledgeable in these sectors, are in high demand throughout the UK and globally. With our full-time and part-time courses, you will gain a broad range of practical knowledge and understanding that is highly sought after by employers.

## What kind of career could I have?

- Accountant
- Courts Officer
- Paralegal
- Police Officer
- Solicitor
- And many more...

Visit [fife.ac.uk/accounting](https://fife.ac.uk/accounting) for more course details.



## STUDENT STORY



**Faith Koszovan**  
HNC Police Studies

*"I didn't know what I was going to do after I completed my course at Fife College but we went on a class trip to Abertay University and I just applied to see what would happen. And now I'm going to university to do Psychology with Forensic Investigations. I'm happier than I've ever been."*

SCQF LEVEL	Accounting, Legal and Police Studies	Full-time	Part-time
5	Intermediate Certificate: Business Administration and Accounting with Law	●	
6	Advanced Certificate: Accounting	●	
6	Advanced Certificate: Legal Studies		●
7	Advanced Professional Development Award: Trade Union Organising and Representation		●
7	HNC: Accounting	●	
7	HNC: Legal Services	●	
7	HNC: Police Studies	●	
7	HNC: Trade Union Organising and Representation		●
8	HND: Accounting	●	
9	BA: Accounting with Finance	●	
10	BA (Hons): Accounting with Finance	●	

Course listings are correct at time of printing, but may be subject to change. Please visit our website for the most up-to-date course information and campus locations.



Key:

Progression route  
.....➔

Academies/  
Community Classes

Double  
line box

College courses

Solid  
line box

School College  
Partnership courses

Filled  
in box

Courses share  
progression options

Dotted  
line box

This planner shows possible  
routes of progression. For full  
entry requirements for each  
course, always check online.

Equivalent to National 4s  
SCQF LEVEL  
4

Equivalent to National 5s  
SCQF LEVEL  
5

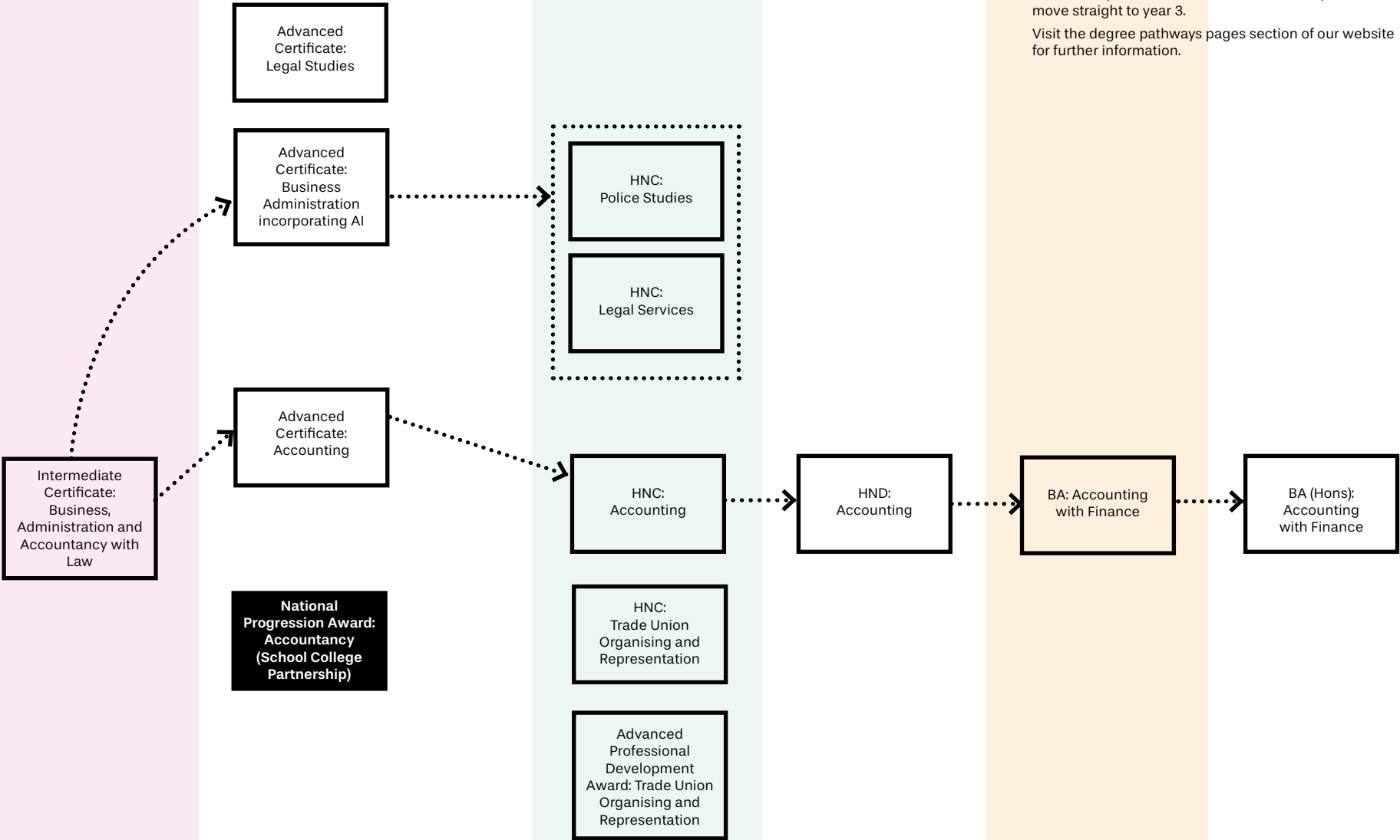
Equivalent to Highers  
SCQF LEVEL  
6

Equivalent to Year 1 at  
University and Advanced Highers  
SCQF LEVEL  
7

Equivalent to Year 2  
at University  
SCQF LEVEL  
8

Equivalent to Year 3  
at University  
SCQF LEVEL  
9

Equivalent to Year 4  
(Honours) at University  
SCQF LEVEL  
10



Articulation to university

Fife College offers over 600 routes to a degree in partnership with a wide range of universities across Scotland and the UK.

These articulation routes, which are pathways between a full-time HNC or HND course to a degree course, are formally agreed between the College and the university to ensure a smooth transition to degree study.

This means that you could gain direct entry to year 2 at university from an HNC, and with an HND you could move straight to year 3.

Visit the degree pathways pages section of our website for further information.

# ART, DESIGN AND THE BUILT ENVIRONMENT

At Fife College, we will provide you with more than just the knowledge and skills you need to paint your dreams. And all we ask is that you bring your boundless imagination and motivation.

Our Art, Design and Jewellery courses offer a dynamic blend of hands-on experience and in-depth exploration of the terminologies, techniques, and essential skills necessary to succeed in these vibrant industries.

Whether your goal is to carve out a fulfilling career path or to launch your own creative venture, our courses will equip you with the expertise and confidence to succeed.

## What kind of career could I have?

- Artist
- Etsy Seller
- Interior Designer
- Jewellery Designer
- Product Designer
- And many more...

Visit [fife.ac.uk/art](https://fife.ac.uk/art) for more course details.



The Built Environment refers to the aspects of our surroundings that are built by humans. It creates where we live, where we play and where we work. From historical and cultural buildings, to shops, connecting our cities, enabling our travel, entertainment, protecting listed buildings and providing energy – it's all together a fantastic industry to work in!

So, if your ambition is to build a career in construction, we can offer you a solid foundation in whichever area interests you.

## What kind of career could I have?

- 3D Designer
- Architectural Technician/Technologist
- Construction Manager
- Interior Designer
- Quantity Surveyor
- Site Manager
- Furniture Designer
- And many more...

Visit [fife.ac.uk/built](https://fife.ac.uk/built) for more course details.



SCQF LEVEL	Art, Design and the Built Environment	Full-time	Part-time
5	Intermediate Certificate: Art and Design Portfolio	●	
6	Advanced Certificate: Art and Design	●	
6	Advanced Certificate: Jewellery	●	
6	Advanced Certificate: Furniture with Product Design	●	
6	National Certificate: Architecture with Interior Design	●	
7	HNC: 3D Design (Furniture and Product Design)	●	
7	HNC: 3D Design (Interiors)	●	
7	HNC: Architectural Technology	●	●
7	HNC: Art and Design	●	
7	HNC: Construction Management		●
7	HNC: Jewellery	●	
7	HNC: Quantity Surveying	●	●
8	HND: 3D Design (Furniture and Product Design)	●	
8	HND: 3D Interior Design	●	
8	HND: Architectural Technology	●	●
8	HND: Art and Design	●	
8	HND: Jewellery	●	
8	HND: Quantity Surveying	●	●

Course listings are correct at time of printing, but may be subject to change. Please visit our website for the most up-to-date course information and campus locations.

Art, Design and the Built Environment Course Planner

Key:

Progression route  
.....>

Academies/  
Community Classes

Double  
line box

College courses

Solid  
line box

School College  
Partnership courses

Filled  
in box

Courses share  
progression options

Dotted  
line box

This planner shows possible  
routes of progression. For full  
entry requirements for each  
course, always check online.

Equivalent to National 4s  
SCQF LEVEL  
4

Equivalent to National 5s  
SCQF LEVEL  
5

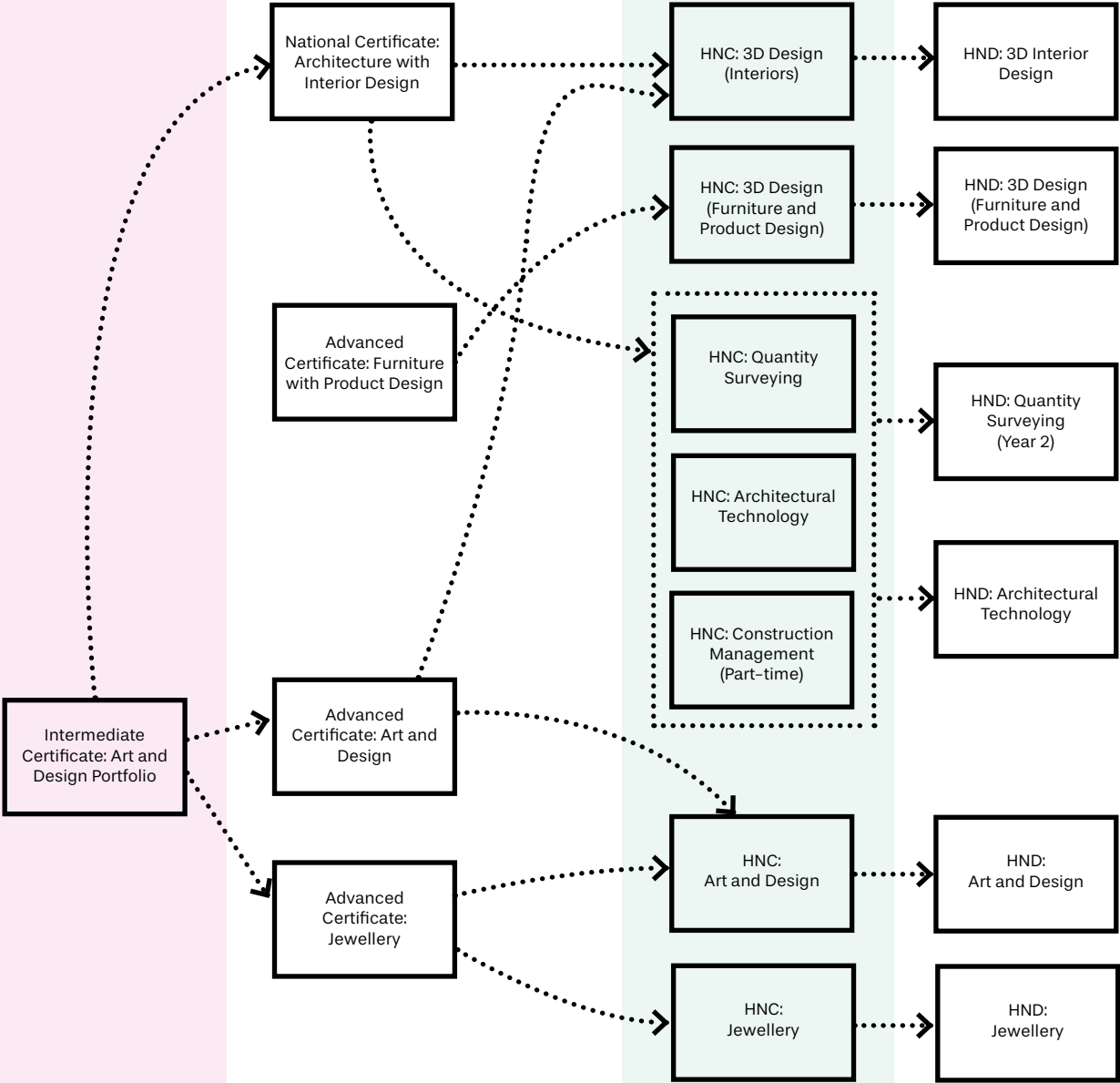
Equivalent to Highers  
SCQF LEVEL  
6

Equivalent to Year 1 at  
University and Advanced Highers  
SCQF LEVEL  
7

Equivalent to Year 2  
at University  
SCQF LEVEL  
8

Equivalent to Year 3  
at University  
SCQF LEVEL  
9

Equivalent to Year 4  
(Honours) at University  
SCQF LEVEL  
10



Articulation to university

Fife College offers over 600 routes to a degree in partnership with a wide range of universities across Scotland and the UK.

These articulation routes, which are pathways between a full-time HNC or HND course to a degree course, are formally agreed between the College and the university to ensure a smooth transition to degree study.

This means that you could gain direct entry to year 2 at university from an HNC, and with an HND you could move straight to year 3.

Visit the degree pathways pages section of our website for further information.



# BUSINESS, ENTERPRISE, ADMINISTRATION, AND IT

Studying Business, Enterprise, Administration, and IT opens doors to opportunities in a wide range of sectors. Our full-time and part-time courses will prepare you for a role in a modern office environment, teaching you skills you need in today's job market including office management, managing people and organisations, economics, and marketing. With our courses, you'll open doors to a huge range of opportunities across all sectors including administration, marketing or even retail management.

Visit [fife.ac.uk/business](https://fife.ac.uk/business) for more course details.

## What kind of career could I have?

- HR Manager
- Office Manager
- Marketing Manager
- Personal Assistant
- And many more...



## STUDENT STORY



**Andrew-Jackson Dale**  
HNC: Business Management

*"I've become more confident in sharing my ideas and discovered parts of my personality I never even knew existed!"*

SCQF LEVEL	Business, Enterprise, Administration and IT	Full-time	Part-time
5	Intermediate Certificate: Business, Administration and Accounting with Law	●	
6	Advanced Certificate: Business Administration incorporating AI	●	
7	HNC: Administration and Information Technology	●	●
7	HNC: Business (with Management)	●	
7	HNC: Facilities Management		●
7	HNC: Business with Digital Marketing	●	
8	HND: Administration and Information Technology	●	
8	HND: Business (with Management)	●	
9	BA: Business Management		●
10	BA (Hons): Business Management		●

Course listings are correct at time of printing, but may be subject to change. Please visit our website for the most up-to-date course information and campus locations.

Key:

Progression route  
.....➔

Academies/  
Community Classes

Double  
line box

College courses

Solid  
line box

School College  
Partnership courses

Filled  
in box

Courses share  
progression options

Dotted  
line box

This planner shows possible  
routes of progression. For full  
entry requirements for each  
course, always check online.

Equivalent to National 4s  
**SCQF LEVEL**  
**4**

Equivalent to National 5s  
**SCQF LEVEL**  
**5**

Equivalent to Highers  
**SCQF LEVEL**  
**6**

Equivalent to Year 1 at  
University and Advanced Highers  
**SCQF LEVEL**  
**7**

Equivalent to Year 2  
at University  
**SCQF LEVEL**  
**8**

Equivalent to Year 3  
at University  
**SCQF LEVEL**  
**9**

Equivalent to Year 4  
(Honours) at University  
**SCQF LEVEL**  
**10**

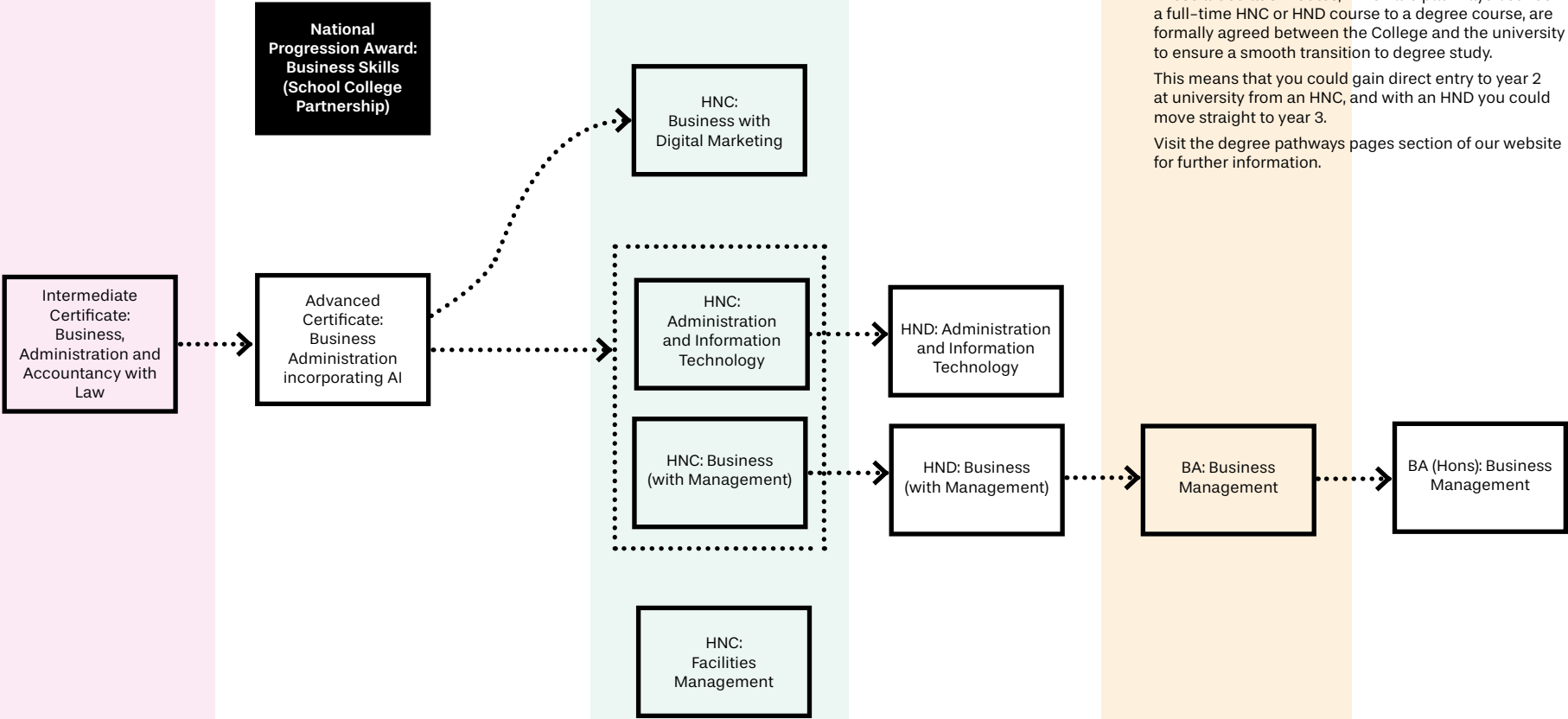
Articulation to university

Fife College offers over 600 routes to a degree in partnership with a wide range of universities across Scotland and the UK.

These articulation routes, which are pathways between a full-time HNC or HND course to a degree course, are formally agreed between the College and the university to ensure a smooth transition to degree study.

This means that you could gain direct entry to year 2 at university from an HNC, and with an HND you could move straight to year 3.

Visit the degree pathways pages section of our website for further information.



# CHILDHOOD STUDIES

With huge demand in Scotland for qualified early learning and childcare workers, there has never been a better time to turn your dream of working with children into a reality. Our wide range of childhood studies courses, from introductory certificates in early learning and childcare, through to HNC, HND and degrees, will provide you with the transferable skills and practical work experience you need to advance in a career in early learning and childcare. Childhood Studies courses also support progression on to further study, leading to careers in primary teaching or social work.

And for those already working within the early learning and childcare sector, our flexible work-based and part-time study options mean you can fit studying around work and family commitments.

## What kind of career could I have?

- Early Years Manager
- Early Years Officer (EYO)
- Childcare Assistant
- Educational (Pupil) Support Assistant
- Early Years Support Worker
- And more...

## Want to know more about these roles?

Check out the Scottish Social Services Council (SSSC) website for more information on the registerable qualifications for each of the roles above. <https://learn.sssc.uk.com/careers/>

Visit [fife.ac.uk/childcare](https://fife.ac.uk/childcare) for more course details.



## STUDENT STORY



### Rosslyn Mullin

NC: Childhood Practice to HNC: Childhood Practice to BA: Childhood Practice

*"Outdoor learning has always been my passion. When I first qualified with my NC, I worked in Scotland's first all-outdoor nursery and then the opportunity came up three years ago for me to become manager. So obviously working towards a degree and being able to do that at the same time has really helped me to flourish in my role. It's been great to have a degree locally, so we didn't have to travel far."*

SCQF LEVEL	Childhood Studies	Full-time	Part-time	Virtual Campus Part-time
4	Certificate: First Steps to a Career in Childcare inc. Skills to Work: Early Education and Childcare	●		
5	Intermediate Certificate: Childhood Studies	●		
5	Intermediate Certificate: Pathway to Early Learning		●	
6	National Certificate: Childhood Practice	●		
6	Professional Development Award: Educational Support Assistant			●
7	HNC: Childhood Practice	●		●
8	HND: Childhood Practice	●		●
9	BA: Childhood Practice		●	
9	BA: Childhood Studies	●		
10	BA (Hons): Childhood Studies	●		

Course listings are correct at time of printing, but may be subject to change. Please visit our website for the most up-to-date course information and campus locations.

Childhood Studies Course Planner

Key:

Progression route  
.....➔

Academies/  
Community Classes

Double  
line box

College courses

Solid  
line box

School College Partnership courses

Filled  
in box

Courses share  
progression options

Dotted  
line box

This planner shows possible routes of progression. For full entry requirements for each course, always check online.

Equivalent to National 4s  
SCQF LEVEL  
4

Equivalent to National 5s  
SCQF LEVEL  
5

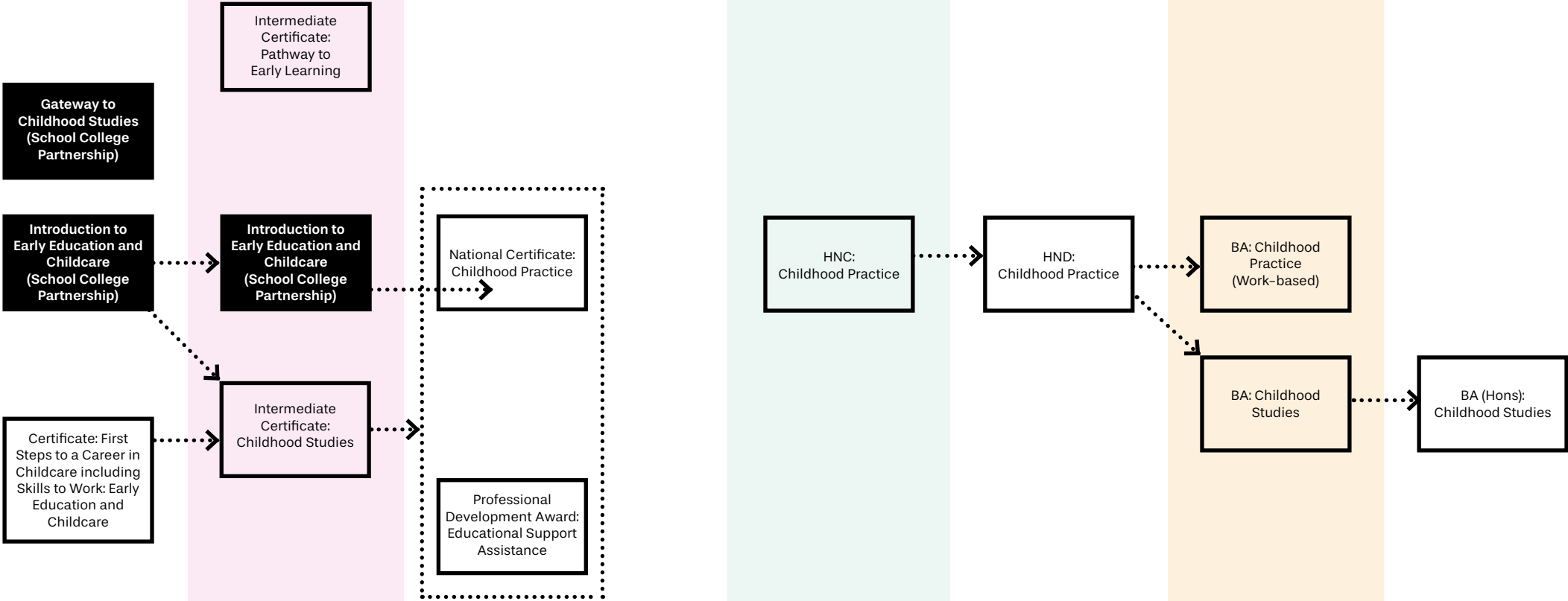
Equivalent to Highers  
SCQF LEVEL  
6

Equivalent to Year 1 at  
University and Advanced Highers  
SCQF LEVEL  
7

Equivalent to Year 2  
at University  
SCQF LEVEL  
8

Equivalent to Year 3  
at University  
SCQF LEVEL  
9

Equivalent to Year 4  
(Honours) at University  
SCQF LEVEL  
10



Articulation to university

Fife College offers over 600 routes to a degree in partnership with a wide range of universities across Scotland and the UK.

These articulation routes, which are pathways between a full-time HNC or HND course to a degree course, are formally agreed between the College and the university to ensure a smooth transition to degree study.

This means that you could gain direct entry to year 2 at university from an HNC, and with an HND you could move straight to year 3.

Visit the degree pathways pages section of our website for further information.



# COMPUTING AND DIGITAL TECHNOLOGIES

Our courses will equip you with the specialist skills you need to pursue a career in areas such as software development, cyber security, 3D animation, computer games design and digital design.

We've invested in our digital infrastructure to ensure the highest quality learning environment with access to the latest software and intrusion detection systems, giving you the edge over other applicants when you enter the job market.

Strong digital and cyber skills can lead to many exciting job opportunities, not only in IT businesses but across all sectors including banking and finance, education, engineering, tourism, healthcare and the public sector.

## What kind of career could I have?

- Cyber Security Specialist
- Games Developer
- Mobile App Developer
- Software Developer
- Web Developer
- And many more...

Visit [fife.ac.uk/digital](https://fife.ac.uk/digital) for more course details.



## STUDENT STORY



### Derek Martin-Stead

Certificate: Computing with Computer Games Design and Cyber Security Intermediate to HND: Computing: Software Development (with Data Analytics)

*"The experience I've had here has just been absolutely amazing. The support you get from the lecturers is outstanding."*

SCQF LEVEL	Computing and Digital Technologies	Full-time	Part-time	Virtual Campus Part-time
4	Certificate: Computing with Computer Games Design and Cyber Security	●		
4	Certificate: Tech Made Easy		●	
5	Intermediate Certificate: Computer Games Design and Animation	●		
5	Intermediate Certificate: Computing with Cyber Security and Games Design	●		
5	Intermediate Certificate: Computing with Software Development and Cyber Security	●		
6	Advanced Certificate: Computer Games Design and Animation	●		
6	Advanced Certificate: Computing with Software Development and Cyber Security	●		
6	Geospatial Foundation Skills Programme		●	
7	HNC: 3D Computer Animation	●		
7	HNC: Computer Games Development	●		
7	HNC: Computing	●		
7	HNC: Computing (Software Development)	●		
7	HNC: Cybersecurity	●		
7	HNC: Digital Design and Development (Games)	●		
7	Professional Development Award: Computer Support		●	
7	Professional Development Award: Data Science			●
8	HND: 3D Computer Animation	●		
8	HND: Computing: Software Development (with Data Analytics)	●		
8	HND: Cybersecurity	●		
8	HND: Digital Design and Development (Games)	●		

Course listings are correct at time of printing, but may be subject to change. Please visit our website for the most up-to-date course information and campus locations.

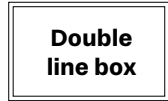
Computing and Technologies Course Planner

Key:

Progression route



Academies/  
Community Classes



College courses



School College Partnership courses



Courses share progression options



This planner shows possible routes of progression. For full entry requirements for each course, always check online.

Equivalent to National 4s  
**SCQF LEVEL**  
**4**

Equivalent to National 5s  
**SCQF LEVEL**  
**5**

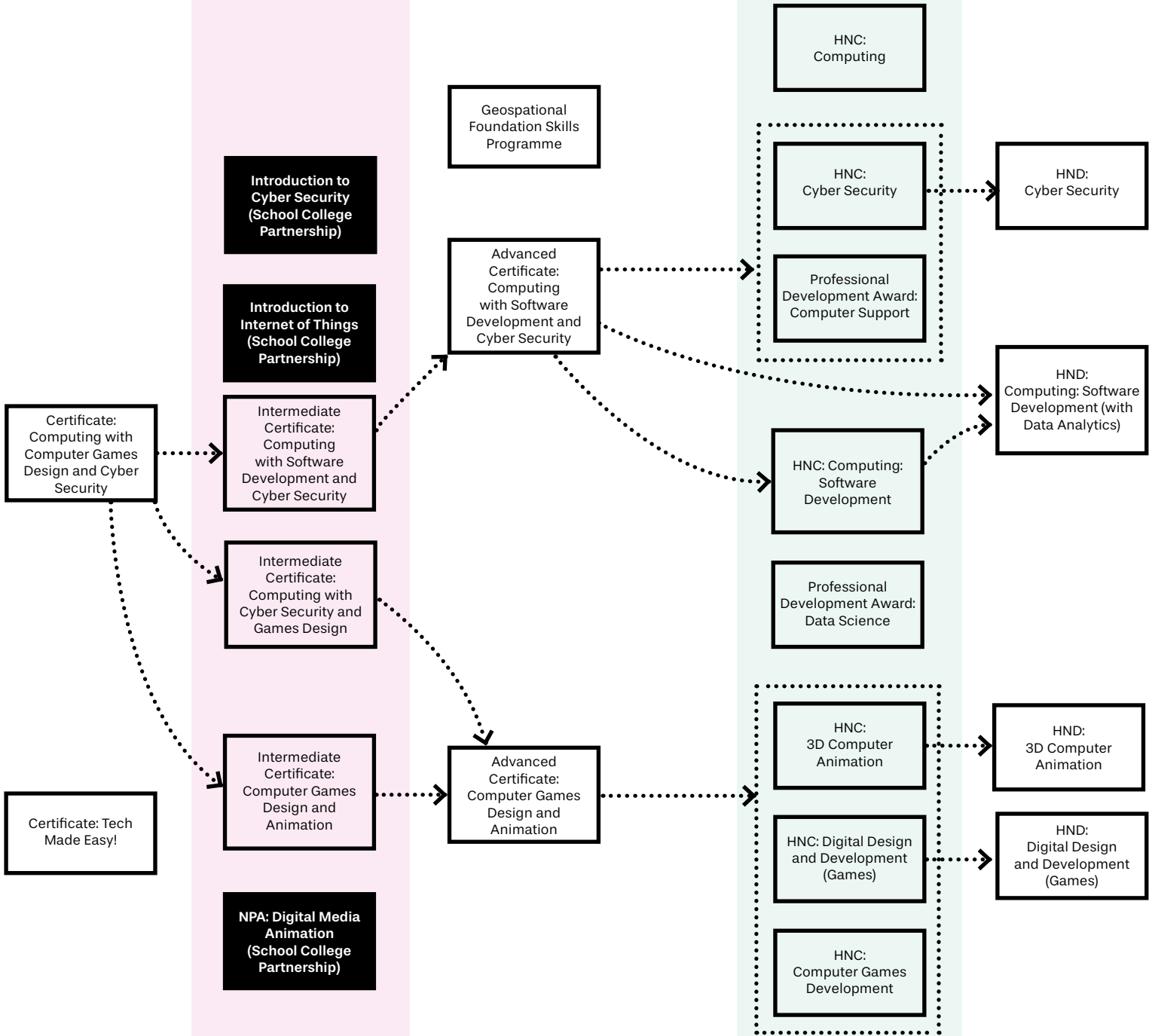
Equivalent to Highers  
**SCQF LEVEL**  
**6**

Equivalent to Year 1 at  
University and Advanced Highers  
**SCQF LEVEL**  
**7**

Equivalent to Year 2  
at University  
**SCQF LEVEL**  
**8**

Equivalent to Year 3  
at University  
**SCQF LEVEL**  
**9**

Equivalent to Year 4  
(Honours) at University  
**SCQF LEVEL**  
**10**



Articulation to university

Fife College offers over 600 routes to a degree in partnership with a wide range of universities across Scotland and the UK.

These articulation routes, which are pathways between a full-time HNC or HND course to a degree course, are formally agreed between the College and the university to ensure a smooth transition to degree study.

This means that you could gain direct entry to year 2 at university from an HNC, and with an HND you could move straight to year 3.

Visit the degree pathways pages section of our website for further information.

# CONSTRUCTION AND BUILDING SERVICES

Our specialised construction trades courses provide essential practical skills that are crucial in the construction industry. Explore traditional domains like Construction Craft and Building Services and embark on trade routes at SCQF Level 4 or 5.

Whether you're interested in Painting and Decorating, Brickwork, Carpentry and Joinery, Plumbing and Gas, or Groundworks, we'll help you to build on the skills you need to succeed.

### What areas can I study?

- Building Services (Electrical, Plumbing and Heating, and Gas)
- Built Environment Technician
- Construction Craft (All Trades)



## NEWS



Fife College welcomed First Minister John Swinney MSP to its new Dunfermline City Campus on 15 December as part of the official completion ceremony for the Dunfermline Learning Campus. During the visit, the First Minister explored modern construction learning facilities, touring specialist spaces and meeting staff. As Scotland's first net-zero-ready tertiary education campus, the facilities support sustainable, industry-focused construction training and future skills development.

SCQF LEVEL	Construction and Building Services	Full-time	Part-time
4	Certificate: Access to Construction Skills	●	
4	Certificate: Construction Futures	●	●
4	Certificate: Construction Futures with Retrofit	●	
5	Construction Skills (CECA) Construction Operations and Civil Engineering Services	●	
5	Diploma in Site Carpentry (City & Guilds)	●	
5	National Progression Award: Plumbing and Electrical Building Services	●	
5	National Progression Awards: Carpentry and Joinery	●	
5	National Progression Awards: Painting and Decorating	●	
5	National Progression Awards: Trowel Trades	●	
6	Level 3 Diploma in Gas Engineering (9074-03)	●	

Construction and Building Services Course Planner

Key:

Progression route  
.....➔

Academies/  
Community Classes

Double  
line box

College courses

Solid  
line box

School College  
Partnership courses

Filled  
in box

Courses share  
progression options

Dotted  
line box

This planner shows possible routes of progression. For full entry requirements for each course, always check online.

SCQF LEVEL  
2

SCQF LEVEL  
3

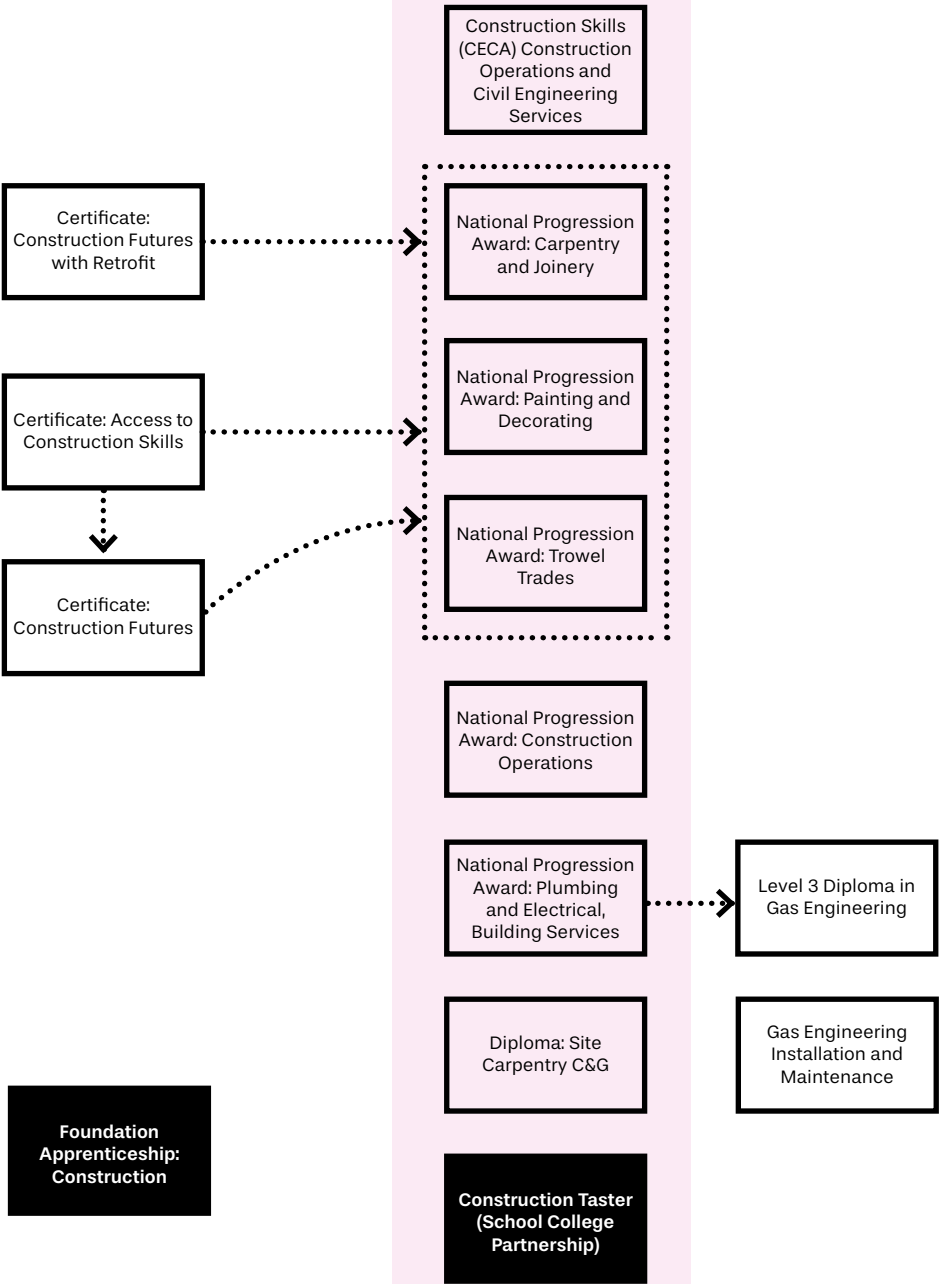
Equivalent to National 4s  
SCQF LEVEL  
4

Equivalent to National 5s  
SCQF LEVEL  
5

Equivalent to Highers  
SCQF LEVEL  
6

Equivalent to Year 1 at  
University and Advanced Highers  
SCQF LEVEL  
7

Equivalent to Year 2  
at University  
SCQF LEVEL  
8



Articulation to university

Fife College offers over 600 routes to a degree in partnership with a wide range of universities across Scotland and the UK.

These articulation routes, which are pathways between a full-time HNC or HND course to a degree course, are formally agreed between the College and the university to ensure a smooth transition to degree study.

This means that you could gain direct entry to year 2 at university from an HNC, and with an HND you could move straight to year 3.

Visit the degree pathways pages section of our website for further information.



# CULINARY ARTS AND HOSPITALITY

Culinary Arts and Hospitality are among Scotland's most important sectors, leading to new and exciting career opportunities for those who have the drive, skills and the right qualifications to get into this industry.

Our state-of-the-art, purpose-built training kitchens and customer-facing training restaurants are designed to provide a professional environment, giving you a fantastic way to consolidate your learning and develop your skills.

Whether you dream of working in a high-end restaurant, running your own food truck, or becoming the next Gordon Ramsay, Fife College's Culinary Arts and Hospitality courses can help set you on an exciting and rewarding career path.

## What kind of career could I have?

- Bar Manager
- Food and Beverage Manager
- Food Product Developer
- Head Chef
- Hospitality Manager
- Pastry Chef
- And more...

Visit [fife.ac.uk/culinary](https://fife.ac.uk/culinary) for more course details.



## NEWS

We deliver first-class teaching from experienced chefs in the very best learning environments.

The Academy, our student-run restaurant, is ranked number one in Kirkcaldy on Tripadvisor, outshining 129 local establishments. And in October it was granted a Travellers' Choice Award which means that it's now ranked among the top 10% of global listings on Tripadvisor.



THE ACADEMY

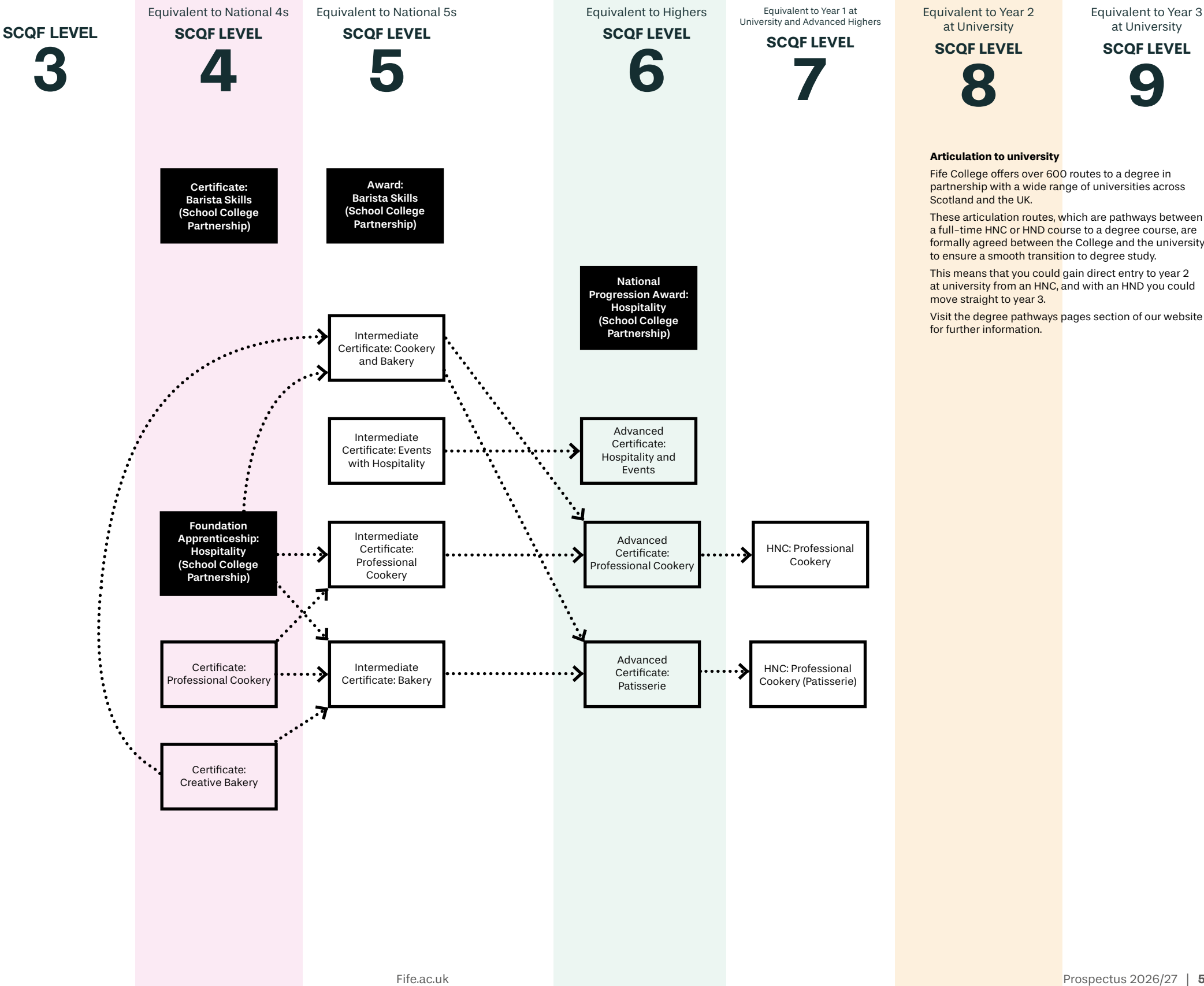
SCQF LEVEL	Culinary Arts and Hospitality	Full-time	Part-time
4	Certificate: Creative Bakery		●
4	Certificate: Professional Cookery	●	
4	National Progression Award: Hospitality		●
5	Intermediate Certificate: Bakery	●	
5	Intermediate Certificate: Cookery and Bakery	●	
5	Intermediate Certificate: Events with Hospitality	●	
5	Intermediate Certificate: Professional Cookery	●	
6	Advanced Certificate: Professional Cookery	●	
6	Advanced Certificate: Hospitality and Events	●	
6	Advanced Certificate: Patisserie	●	
7	HNC: Professional Cookery (Patisserie)	●	
7	HNC: Professional Cookery	●	

Course listings are correct at time of printing, but may be subject to change. Please visit our website for the most up-to-date course information and campus locations.

### Key:

## Dotted line box

This planner shows possible routes of progression. For full entry requirements for each course, always check online.



# ENGINEERING AND ENERGY

Engineering offers not only promising job prospects in emerging industries such as renewable energy, pharmaceuticals, digital infrastructure, and fast-moving consumer goods (FMCG) production, but also in more traditional fields such as mechanical engineering, and fabrication and welding.

At Fife College, we offer a comprehensive range of courses designed to fit with your interests and career ambitions. Whether your passion lies in renewable energy, electrical engineering, mechanical engineering, robotics, or advanced wiring techniques, we have courses tailored just for you. Our Engineering courses are suitable for learners at every level, from pre-apprenticeship training and certificates in engineering, up to HNC, which could allow you to progress on to a degree at university.

## What kind of career could I have?

- Advanced Manufacturing
- Computer Aided Design (CAD)
- Electrician
- Energy and Renewables
- Inspection and Non-destructive Testing
- Robotics and Automation
- Welder
- And more...

Visit [fife.ac.uk/engineering](https://fife.ac.uk/engineering) for more course details.



## STUDENT STORY



### Dylan Reid

National Certificate: Engineering Systems (Renewable Energy)

*"The course gave me the practical experience and theoretical knowledge I needed to pursue a career in the renewable energy sector."*



## Engineering and Energy

SCQF LEVEL		Full-time	Part-time
<b>Automotive</b>			
4	Certificate: Gateway to Engineering (Including Automotive)	●	
5	IMI Award: Transport Maintenance IMI Level 1	●	
6	Diploma in Light Vehicle Maintenance and Repair Principles VRQ 3	●	
6	IMI Certificate: Transport Maintenance IMI Level 2	●	
<b>Electrical Engineering</b>			
4	Certificate: Gateway to Engineering (Including Electrical)	●	
5	National Certificate: Electrical Engineering	●	
5	National Certificate: Electrical Installation (Pre-Apprenticeship)	●	
5	National Certificates: Electrical Engineering and Electronic Engineering	●	
6	Advanced Certificate: Electrical Engineering	●	
6	National Certificate: Electrical and Electronic Engineering	●	●
6	National Certificate: Electrical Engineering	●	●
7	HNC: Electrical Engineering	●	●
<b>Engineering and Engineering Systems</b>			
4	Certificate: Introduction to Engineering Skills	●	
5	Intermediate Certificate: Engineering Skills	●	
5	National Certificate: Engineering Practice	●	
6	Advanced Certificate: Engineering Systems	●	
<b>Fabrication and Welding</b>			
5	Intermediate Certificate: Engineering (Fabrication and Welding)	●	
5	National Certificate: Fabrication and Welding Engineering	●	●
7	HNC: Fabrication and Welding		●
7	HNC: Fabrication, Welding and Inspection	●	●
<b>Manufacturing Engineering</b>			
6	National Certificate: Manufacturing Engineering	●	●
7	HNC: Computer Aided Draughting and Design	●	●
7	HNC: Manufacturing Engineering	●	●
<b>Mechanical Engineering</b>			
6	National Certificate: Mechanical Engineering (including SWAP Access to Engineering)	●	
6	National Certificate: Mechanical Engineering	●	●
7	HNC: Mechanical Engineering	●	●

Course listings are correct at time of printing, but may be subject to change. Please visit our website for the most up-to-date course information and campus locations.

Automotive, Fabrication and Welding, and Manufacturing Course Planner

Key:

Progression route  
.....>

Academies/  
Community Classes  
  
Double  
line box

College courses  
  
Solid  
line box

School College  
Partnership courses  
  
Filled  
in box

Courses share  
progression options  
  
Dotted  
line box

This planner shows possible routes of progression. For full entry requirements for each course, always check online.

Equivalent to National 4s  
**SCQF LEVEL**  
**4**

Equivalent to National 5s  
**SCQF LEVEL**  
**5**

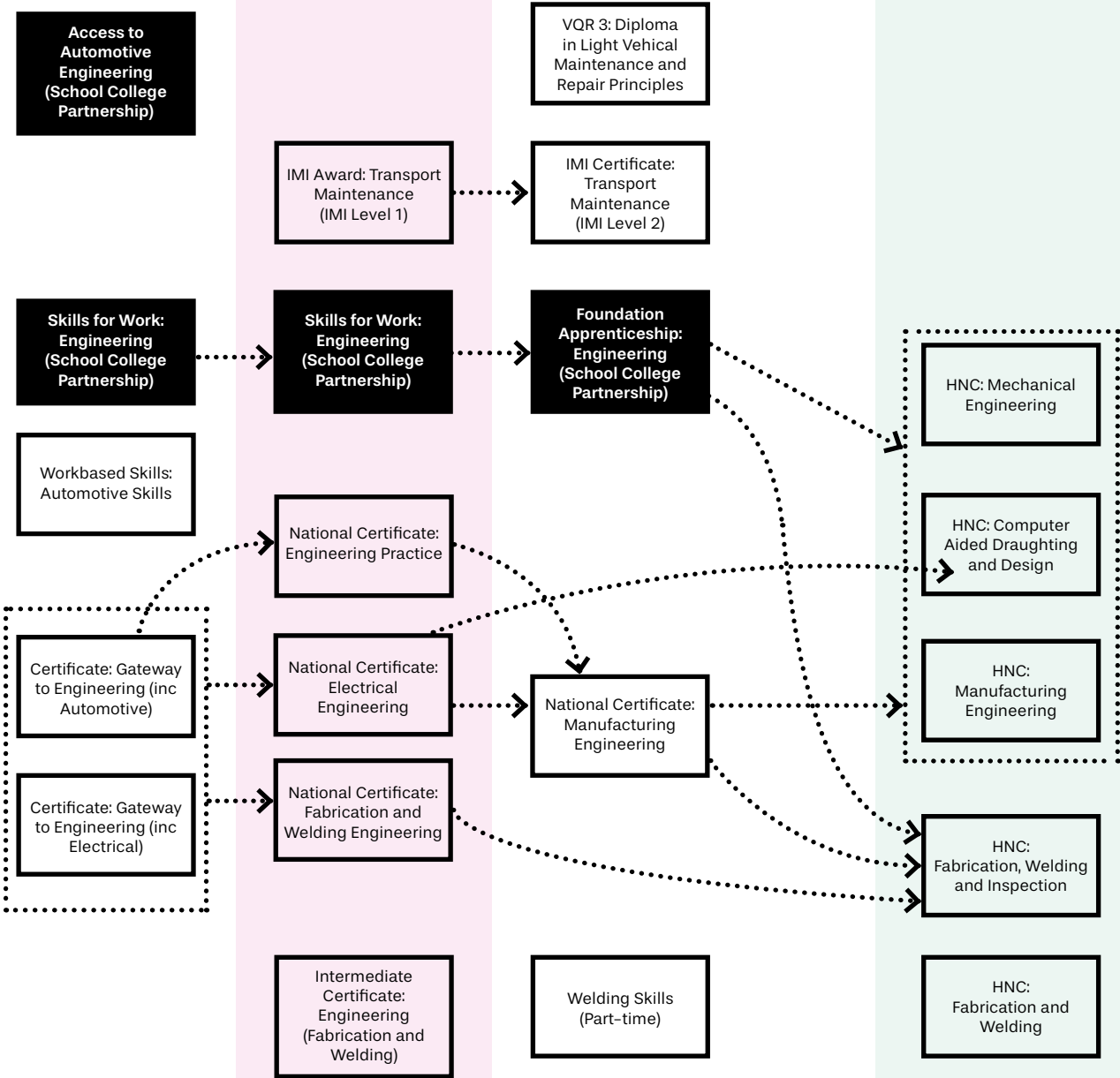
Equivalent to Highers  
**SCQF LEVEL**  
**6**

Equivalent to Year 1 at  
University and Advanced Highers  
**SCQF LEVEL**  
**7**

Equivalent to Year 2  
at University  
**SCQF LEVEL**  
**8**

Equivalent to Year 3  
at University  
**SCQF LEVEL**  
**9**

Equivalent to Year 4  
(Honours) at University  
**SCQF LEVEL**  
**10**



Articulation to university

Fife College offers over 600 routes to a degree in partnership with a wide range of universities across Scotland and the UK.

These articulation routes, which are pathways between a full-time HNC or HND course to a degree course, are formally agreed between the College and the university to ensure a smooth transition to degree study.

This means that you could gain direct entry to year 2 at university from an HNC, and with an HND you could move straight to year 3.

Visit the degree pathways pages section of our website for further information.



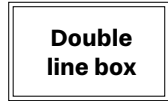
Electrical, Mechanical and Engineering Systems Course Planner

Key:

Progression route



Academies/  
Community Classes



College courses



School College Partnership courses



Courses share progression options

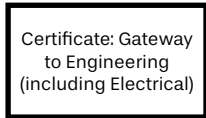
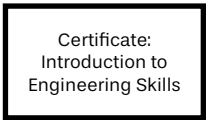


This planner shows possible routes of progression. For full entry requirements for each course, always check online.

Equivalent to National 4s

SCQF LEVEL

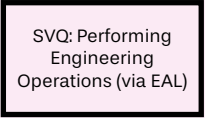
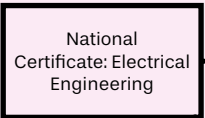
4



Equivalent to National 5s

SCQF LEVEL

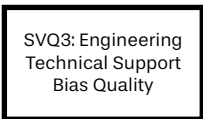
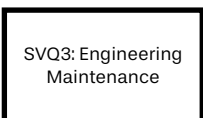
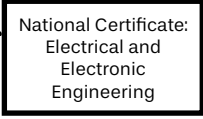
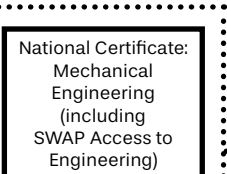
5



Equivalent to Highers

SCQF LEVEL

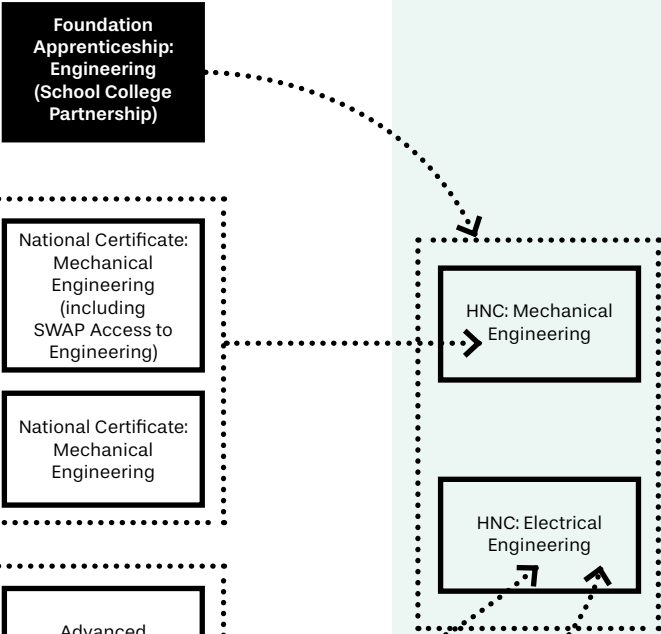
6



Equivalent to Year 1 at University and Advanced Highers

SCQF LEVEL

7



Equivalent to Year 2 at University

SCQF LEVEL

8



Equivalent to Year 3 at University

SCQF LEVEL

9

Articulation to university

Fife College offers over 600 routes to a degree in partnership with a wide range of universities across Scotland and the UK.

These articulation routes, which are pathways between a full-time HNC or HND course to a degree course, are formally agreed between the College and the university to ensure a smooth transition to degree study.

This means that you could gain direct entry to year 2 at university from an HNC, and with an HND you could move straight to year 3.

Visit the degree pathways pages section of our website for further information.

Equivalent to Year 4 (Honours) at University

SCQF LEVEL

10

# ENGLISH FOR SPEAKERS OF OTHER LANGUAGES (ESOL)

We offer English for Speakers of Other Languages (ESOL) courses to help you develop your speaking, listening, reading, and writing skills to help you feel more comfortable in conversation, and be able to communicate in more effective ways, whether you are looking to develop your English language skills for work or pleasure.

Our ESOL courses, which range from introductory level to advanced level, will help you prepare for whatever your next step is – you'll be ready for employment opportunities, the Cambridge PET, and the Citizenship test.

Visit [fife.ac.uk/ESOL](https://fife.ac.uk/ESOL) for more course details.



## NEWS

Every year our ESOL Level 4 and 5 students organise the Diversity Festival – a vibrant celebration of cultures and communities. The festival showcases Fife College's multicultural spirit, encouraging appreciation of diverse traditions, and fostering connections among people.



SCQF LEVEL	English for Speakers of Other Languages (ESOL)	Full-time	Part-time
2	English for Speakers of Other Languages: ESOL Beginners	●	
3	English for Speakers of Other Languages: ESOL Elementary	●	
4	National 4: English for Speakers of Other Languages ESOL	●	
5	National 5: English for Speakers of Other Languages ESOL	●	

Course listings are correct at time of printing, but may be subject to change. Please visit our website for the most up-to-date course information and campus locations.

ESOL Course  
Planner

Key:

Progression route  
.....➔

Academies/  
Community Classes

Double  
line box

College courses

Solid  
line box

School College  
Partnership courses

Filled  
in box

Courses share  
progression options

Dotted  
line box

This planner shows possible  
routes of progression. For full  
entry requirements for each  
course, always check online.

SCQF LEVEL  
2

SCQF LEVEL  
3

Equivalent to National 4s  
SCQF LEVEL  
4

Equivalent to National 5s  
SCQF LEVEL  
5

Equivalent to Highers  
SCQF LEVEL  
6

Equivalent to Year 1 at  
University and Advanced Highers  
SCQF LEVEL  
7

Equivalent to Year 2  
at University  
SCQF LEVEL  
8

English for Speakers  
of Other Languages  
(ESOL): Beginners

English for Speakers  
of Other Languages  
(ESOL): Elementary

National 4: English  
for Speakers of  
Other Languages  
(ESOL)

National 5: English  
for Speakers of  
Other Languages  
(ESOL)

Depending on your  
level of English,  
you can go on to  
apply for a course  
or degree at Fife  
College

Articulation to university

Fife College offers over 600 routes to a degree in  
partnership with a wide range of universities across  
Scotland and the UK.

These articulation routes, which are pathways between  
a full-time HNC or HND course to a degree course, are  
formally agreed between the College and the university  
to ensure a smooth transition to degree study.

This means that you could gain direct entry to year 2  
at university from an HNC, and with an HND you could  
move straight to year 3.

Visit the degree pathways pages section of our website  
for further information.

# HAIR, BEAUTY AND MAKE-UP

Whether you dream of being a stylist, working in a spa or running your own salon, we have the course for you. Our courses are taught by fully-qualified, highly creative staff who have a wealth of professional and teaching experience.

Whether you choose hairdressing, barbering, or beauty therapy, you will be working with a real-life business focus, providing treatments and services to clients in our hair and beauty salons. You'll learn the vital skills needed to work in the industry, such as delivering a high standard of customer service, as well as practical skills and knowledge of different treatments.

## What kind of career could I have?

- Barber
- Beauty Therapist
- Hair Stylist
- Health Club Spa Manager
- Nail Technician
- Salon Manager
- And more...

Visit [fife.ac.uk/hair](https://fife.ac.uk/hair) for more course details.



## STUDENT STORY



### Sarah Lesiuk

VTCT Level 2 Diploma in Complementary Therapies

*"I enjoy everything about this course and everything we have learned so far. The practical aspect has been wonderful as we learn so much about different techniques and different types of therapies."*

## Hair, Beauty and Make-up

		Full-time	Part-time
SCQF LEVEL	Beauty and Make-up Artistry		
4	Certificate: Beauty Therapy	●	
5	Intermediate Certificate: Beauty Therapy	●	
5	Intermediate Certificate: Beauty and Make-Up	●	
5	Intermediate Certificate: Nail Services	●	
5	VTCT Level 2: Diploma in Complementary Therapies	●	
6	Advanced Certificate: Make-up Artistry	●	
6	Advanced Certificate: Beauty Therapy Massage	●	
7	VTCT Level 4: Diploma in Advanced Aesthetic Treatments	●	
SCQF LEVEL	Hairdressing and Barbering		
4	VTCT Level 1: Diploma in Hairdressing	●	
5	SVQ Level 2: Barbering	●	
5	VTCT Level 2: Diploma in Hairdressing	●	
6	SVQ Level 3: Hairdressing	●	
7	VTCT Level 4: Diploma in Advanced Techniques and Management Practice in Hairdressing	●	

Course listings are correct at time of printing, but may be subject to change. Please visit our website for the most up-to-date course information and campus locations.



Hair, Beauty and Make-up Course Planner

Key:

Progression route  
.....>

Academies/  
Community Classes

Double  
line box

College courses

Solid  
line box

School College  
Partnership courses

Filled  
in box

Courses share  
progression options

Dotted  
line box

This planner shows possible  
routes of progression. For full  
entry requirements for each  
course, always check online.

Equivalent to National 4s  
SCQF LEVEL  
4

Certificate:  
Beauty Therapy

Introduction to the  
Hair and Beauty  
Sector  
VTCT Entry  
Certificate  
(School College  
Partnership)

NPA: Beauty and  
Hairstyling  
(School College  
Partnership)

VTCT Level 1:  
Diploma in  
Hairdressing

NPA: Long Hair  
Design with  
Make-up  
(School College  
Partnership)

Equivalent to National 5s  
SCQF LEVEL  
5

Intermediate  
Certificate: Beauty  
and Make-up

VTCT Level 2:  
Diploma in  
Complementary  
Therapies

Intermediate  
Certificate: Beauty  
Therapy

Intermediate  
Certificate: Nail  
Services

SVQ: Barbering  
Level 2

VTCT Level 2:  
Diploma in  
Hairdressing

Equivalent to Highers  
SCQF LEVEL  
6

Advanced  
Certificate: Make-up  
Artistry

Advanced  
Certificate: Beauty  
Therapy Massage

SVQ: Hairdressing  
Level 3

Equivalent to Year 1 at  
University and Advanced Highers  
SCQF LEVEL  
7

VTCT Level  
4: Diploma in  
Advanced Aesthetic  
Treatments

VTCT Level  
4: Diploma  
in Advanced  
Techniques and  
Management  
Practice in  
Hairdressing

Equivalent to Year 2  
at University  
SCQF LEVEL  
8

Equivalent to Year 3  
at University  
SCQF LEVEL  
9

Equivalent to Year 4  
(Honours) at University  
SCQF LEVEL  
10

Articulation to university

Fife College offers over 600 routes to a degree in partnership with a wide range of universities across Scotland and the UK.

These articulation routes, which are pathways between a full-time HNC or HND course to a degree course, are formally agreed between the College and the university to ensure a smooth transition to degree study.

This means that you could gain direct entry to year 2 at university from an HNC, and with an HND you could move straight to year 3.

Visit the degree pathways pages section of our website for further information.

# HEALTH CARE, WELLBEING AND COUNSELLING

## Health Care

Working in Health Care is a career like no other. You will be joining thousands of frontline heroes who make a real difference every day to the lives of the most vulnerable people in society. We will teach you the skills and knowledge to work as a health care support worker or provide you with an entry route to degrees in nursing, midwifery, and allied health professions.

### What kind of career could I have?

- Adult Nurse
- Care Home Practitioner
- Children's Nurse
- And more...

## Wellbeing and Counselling

Our wide range of Wellbeing and Counselling courses will provide you with the transferable skills and practical work experience you need to get started in your career. Or if you're already working within the industry, our flexible work-based and part-time study options mean you can fit studying around work and family commitments. Whether you want to work as a counsellor or a youth worker, a housing officer or a social worker, you'll be equipped with the knowledge and skills to help people, changing their lives for the better.

### What kind of career could I have?

- Community Development Worker
- Housing Officer
- Residential Childcare Support Worker
- Social Worker
- Youth Worker
- And many more...

Find out more about all of these courses at [fife.ac.uk/care](https://fife.ac.uk/care)

## MEET YOUR LECTURERS



### Lynne Watson

SWAP Access to Nursing Lecturer

*"I started my journey when I was 17 with adult nursing and then I did a conversion course to midwifery. So for most of my career, prior to being here, I was a midwife. And that got me into teaching because you've got your antenatal clinics, and your parenthood classes. I just loved working with the public and empowering them with knowledge. So, it was a natural progression for me to end up working here at Fife College."*



Fife.ac.uk

SCQF LEVEL	Health Care, Wellbeing and Counselling	Full-time	Part-time	Virtual Campus Part-time
5	Intermediate Certificate: Careers in Healthcare	●		
6	Advanced Certificate: Careers in Care	●		
6	Advanced Certificate: Health and Social Care – Access to HNC	●		
6	Advanced Certificate: Introduction to Pharmacy Services	●		
6	Advanced Certificate: Oral Healthcare	●		
6	Advanced Certificate: SWAP Access to Nursing	●		
6	Supporting Neurodiversity and Wellbeing in Care	●		
6	Youth Work Data			●
7	HNC: Additional Support Needs: Supporting the Individual	●		
7	HNC: Counselling	●	●	
7	HNC: Social Services	●		
7	HNC: Health Care Practice	●		●
7	Professional Development Award: Administration of Medication		●	●
7	Professional Development Award: Health and Social Care Supervision		●	
7	Professional Development Award: Technology Enabled Care			●
8	HND: Additional Support Needs – Managing and Supporting the Services	●		
8	HND: Counselling		●	
8	Professional Development Award: Promoting Enhanced Professional Practice		●	
8	Professional Development Award: Acute and Community Care		●	
9	BA: Inclusion and Support in Society	●		
10	BA (Hons): Inclusion and Support in Society	●		

Course listings are correct at time of printing, but may be subject to change. Please visit our website for the most up-to-date course information and campus locations.

Health Care, Wellbeing and Counselling Course Planner

Key:

Progression route  
.....➔

Academies/  
Community Classes

Double  
line box

College courses

Solid  
line box

School College  
Partnership courses

Filled  
in box

Courses share  
progression options

Dotted  
line box

This planner shows possible  
routes of progression. For full  
entry requirements for each  
course, always check online.

Equivalent to National 4s  
**SCQF LEVEL**  
**4**

Equivalent to National 5s  
**SCQF LEVEL**  
**5**

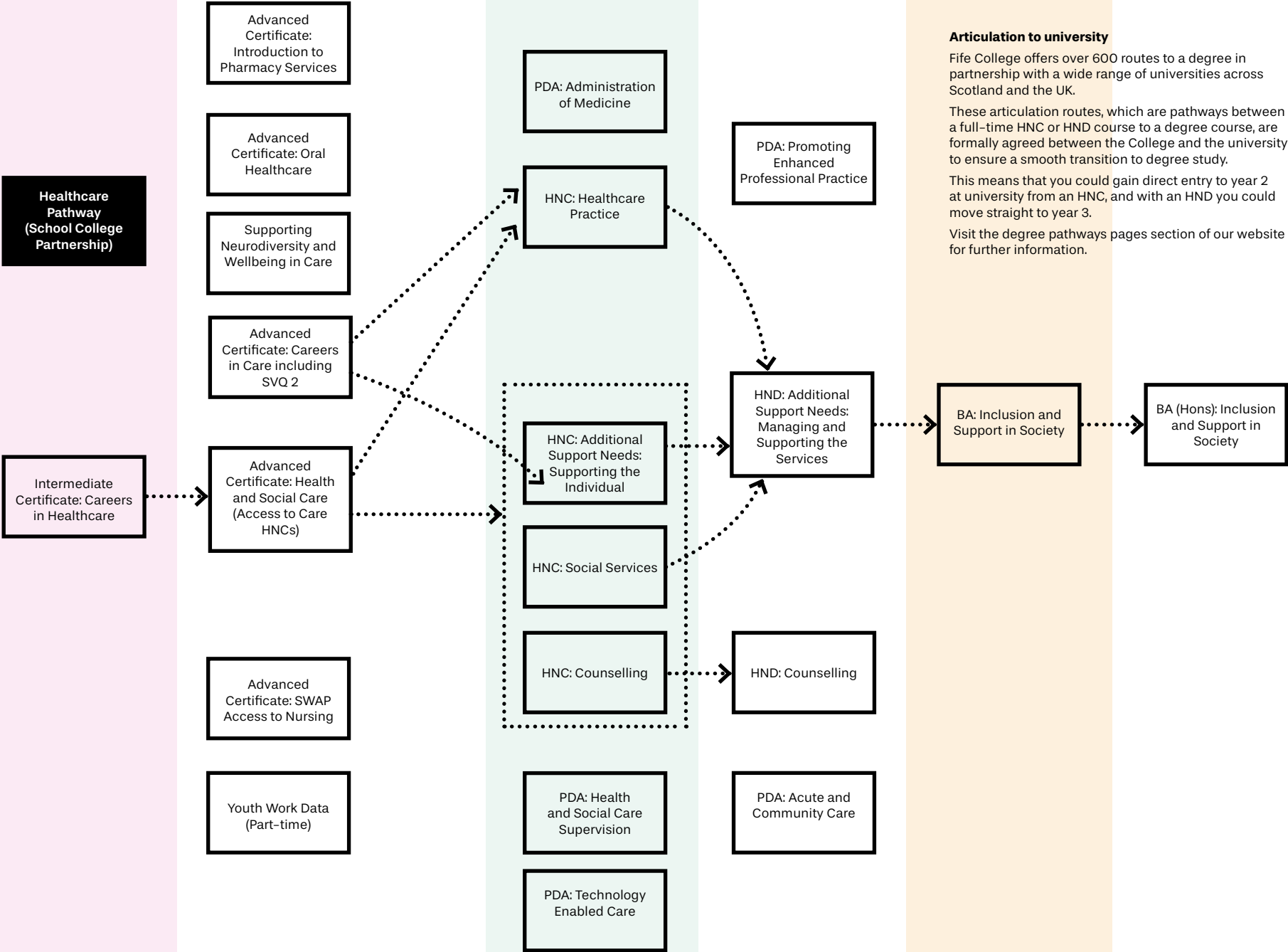
Equivalent to Highers  
**SCQF LEVEL**  
**6**

Equivalent to Year 1 at  
University and Advanced Highers  
**SCQF LEVEL**  
**7**

Equivalent to Year 2  
at University  
**SCQF LEVEL**  
**8**

Equivalent to Year 3  
at University  
**SCQF LEVEL**  
**9**

Equivalent to Year 4  
(Honours) at University  
**SCQF LEVEL**  
**10**



# LOCAL OUTREACH LEARNING

As part of our commitment to the communities we serve, we offer lots of courses in local venues across Fife through our Local Outreach Learning programme, which can help you improve your skills for learning, work and life.

Some classes are delivered in partnership with Fife Council and our other partners in a relaxed, informal and supportive environment with experienced staff on hand to help you take the next step. You might even be eligible for assistance with childcare and travel costs when you attend these courses.

Visit [fife.ac.uk/local](https://fife.ac.uk/local) for more course details.



## STUDENT STORY



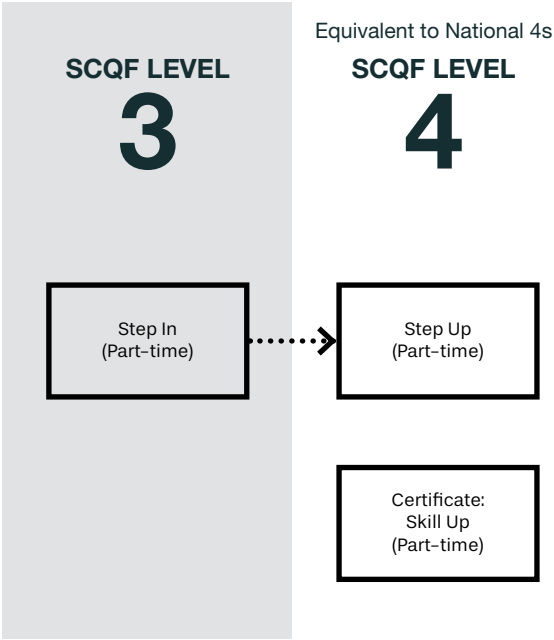
**Kathleen Farrell**  
Advanced Certificate: SWAP Access to Arts, Humanities and Primary Education

*"I started studying with Fife College on a community-based adult learning course (Step In) course. I really enjoyed it, and I managed to get National 5s in Numeracy and English, and I thought to myself – I can really do this!"*

*"I'm currently doing a SWAP course, which entails psychology, criminology, sociology, history, English, and Maths, which I never thought I would be able to manage in 100 years! I would say, if you're any way unsure, put your doubts away – just come!"*

SCQF LEVEL	Local Outreach Learning	Full-time	Part-time
3	Step In		●
4	Certificate: Skill Up		●
4	Step Up		●

Course listings are correct at time of printing, but may be subject to change. Please visit our website for the most up-to-date course information and campus locations.





# MEDIA AND SOUND PRODUCTIONS

Do you want to learn how to create better media content? Do you have an eye for photography? Interested in becoming a presenter, camera operator or vision mixer? Can you see yourself in a recording studio, radio studio, design or TV studio? If so, then this area is for you!

You can study a range of creative media courses with us, from photography and screen production to podcasting, graphic design, and more. Our lecturing staff will apply all their industry knowledge and teaching experience to help you become a successful contributor and producer in the creative industries.

## What kind of career could I have?

- Camera Assistant/Operator
- Graphic Designer
- Photographer
- Radio Presenter
- Sound Producer/Music Technologist
- TV or Film Producer
- And many more...

Visit [fife.ac.uk/media](https://fife.ac.uk/media) for more course information.



## STUDENT STORY



### Sharrell Carroll

HND: Media and Communications

*"What I enjoyed most about studying at Fife College were the real-world skills that are taught within the course and the resources that are provided. On day one when I walked in, we were shown around the studios and television studios, and I could not believe how amazing the equipment was. It was all very much up to date. They are consistently updating the technology. so students, including myself, are very lucky to have access to these resources. That was a big plus for me."*

SCQF LEVEL	Media and Sound Productions	Full-time	Part-time
4	Certificate: Broadcast Media		●
5	Intermediate Certificate: Broadcast Media		●
6	Advanced Certificate: Visual Design and Content Production	●	
6	Advanced Certificate: Broadcast Media	●	
6	Advanced Certificate: Photography	●	
6	Advanced Certificate: Sound Production	●	
7	HNC: Photography	●	
7	HNC: Sound Production	●	
7	HNC: Visual Communication	●	
7	HNC: Media and Communication	●	
8	HND: Media and Communication	●	
8	HND: Photography	●	
8	HND: Sound Production	●	
8	HND: Visual Communication	●	

Course listings are correct at time of printing, but may be subject to change. Please visit our website for the most up-to-date course information and campus locations.

Media and Sound Productions Course Planner

Key:

Progression route  
.....➔

Academies/  
Community Classes

Double  
line box

College courses

Solid  
line box

School College  
Partnership courses

Filled  
in box

Courses share  
progression options

Dotted  
line box

This planner shows possible  
routes of progression. For full  
entry requirements for each  
course, always check online.

Equivalent to National 4s  
SCQF LEVEL  
4

Equivalent to National 5s  
SCQF LEVEL  
5

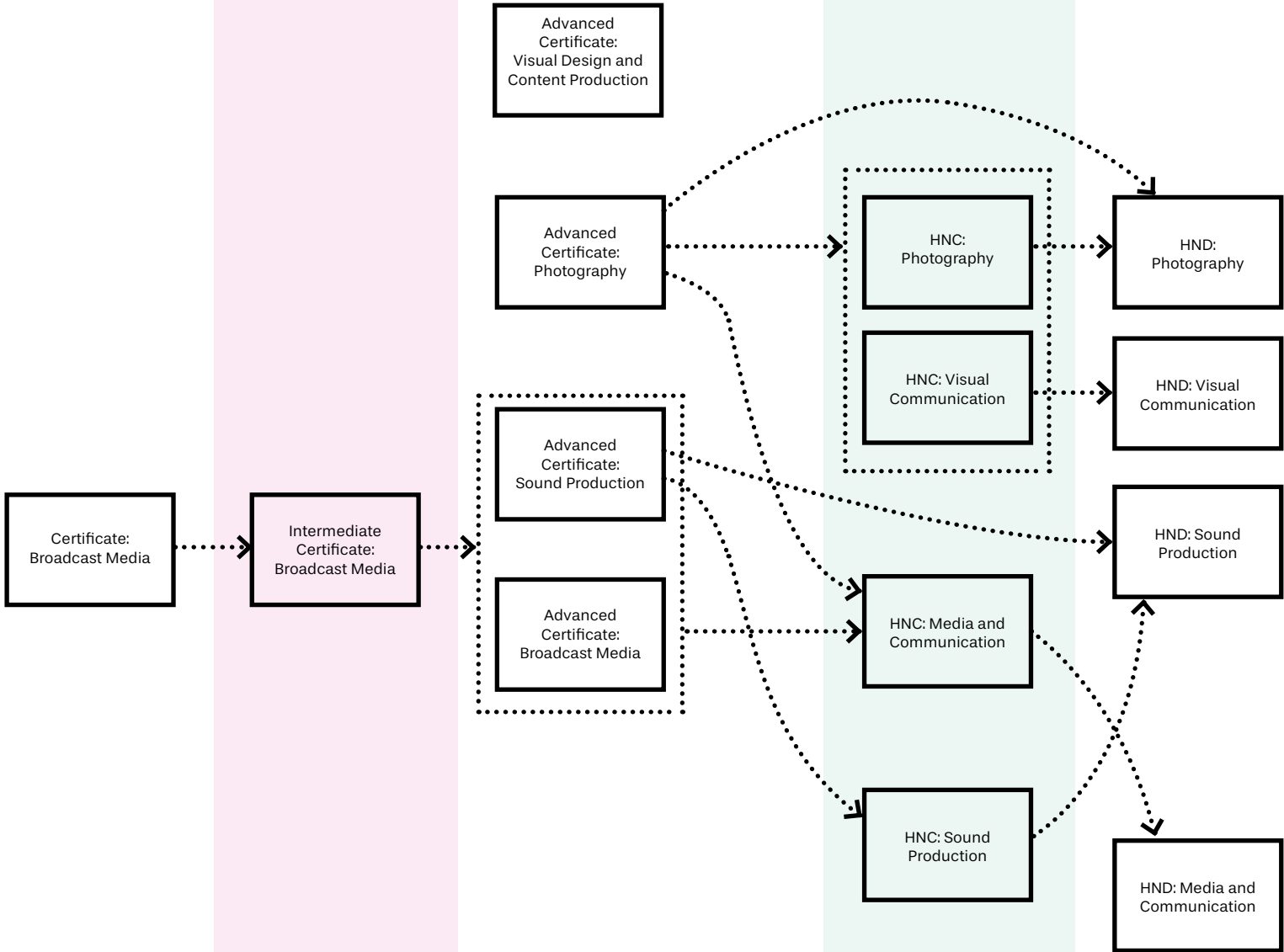
Equivalent to Highers  
SCQF LEVEL  
6

Equivalent to Year 1 at  
University and Advanced Highers  
SCQF LEVEL  
7

Equivalent to Year 2  
at University  
SCQF LEVEL  
8

Equivalent to Year 3  
at University  
SCQF LEVEL  
9

Equivalent to Year 4  
(Honours) at University  
SCQF LEVEL  
10



Articulation to university

Fife College offers over 600 routes to a degree in partnership with a wide range of universities across Scotland and the UK.

These articulation routes, which are pathways between a full-time HNC or HND course to a degree course, are formally agreed between the College and the university to ensure a smooth transition to degree study.

This means that you could gain direct entry to year 2 at university from an HNC, and with an HND you could move straight to year 3.

Visit the degree pathways pages section of our website for further information.

# PERFORMING ARTS



Are you someone who is fascinated by theatre and enjoys putting on a show? Perhaps you dream of seeing your name in lights, or scrolling in the credits, or being highlighted in a theatre show programme? Then look no further! Our Performing Arts courses are for you!

Our highly-experienced practitioners and lecturers offer a wide variety of specialisms and many superb opportunities to get hands-on, real-life experience through work placements and external events. You can even 'earn while you learn' as part of our Studio 38 Youth Theatre team of workshop facilitators and support assistants.

## What kind of career could I have?

- Actor/Performer
- Acting for stage/screen/TV/film
- Musical Theatre Performer
- And more...

Visit [fife.ac.uk/perform](https://fife.ac.uk/perform) for more course information.



## MEET YOUR LECTURERS



**Kieran McLoughlin**  
Performing Arts Lecturer

*"Students who come to our faculty can expect to have industry-level training, working in theatre and film in an engaging department with real-life projects and collaborating with companies. We take our training seriously, but we have fun while we're doing it."*

SCQF LEVEL	Performing Arts	Full-time	Part-time
6	Advanced Certificate: Acting and Theatre Performance	●	
7	HNC: Acting and Performance	●	
8	HND: Acting and Performance	●	

Course listings are correct at time of printing, but may be subject to change. Please visit our website for the most up-to-date course information and campus locations.



Performing Arts  
Course Planner

Key:

Progression route  
.....➔

Academies/  
Community Classes

Double  
line box

College courses

Solid  
line box

School College  
Partnership courses

Filled  
in box

Courses share  
progression options

Dotted  
line box

This planner shows possible  
routes of progression. For full  
entry requirements for each  
course, always check online.

Equivalent to National 4s  
SCQF LEVEL  
4

Equivalent to National 5s  
SCQF LEVEL  
5

Equivalent to Highers  
SCQF LEVEL  
6

Equivalent to Year 1 at  
University and Advanced Highers  
SCQF LEVEL  
7

Equivalent to Year 2  
at University  
SCQF LEVEL  
8

Equivalent to Year 3  
at University  
SCQF LEVEL  
9

Equivalent to Year 4  
(Honours) at University  
SCQF LEVEL  
10

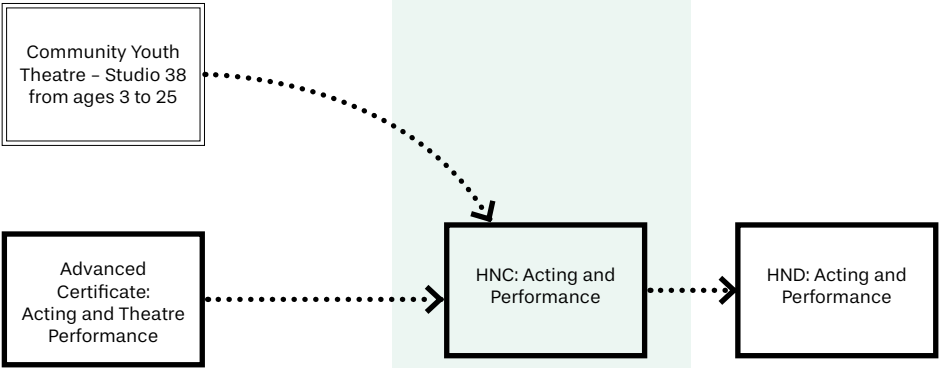
Articulation to university

Fife College offers over 600 routes to a degree in partnership with a wide range of universities across Scotland and the UK.

These articulation routes, which are pathways between a full-time HNC or HND course to a degree course, are formally agreed between the College and the university to ensure a smooth transition to degree study.

This means that you could gain direct entry to year 2 at university from an HNC, and with an HND you could move straight to year 3.

Visit the degree pathways pages section of our website for further information.





# SCIENCE AND MATHS

Science and maths play a critical role in shaping the understanding of our world and cover a huge variety of topics, from astronomy to zoology, each leading to a world of fantastic career opportunities.

Our diverse range of science and maths courses, from physics and chemistry to applied biological sciences provide the core skills and theoretical knowledge you need to progress onto further study and a successful career within this exciting sector.

## What career could I have?

- Energy Technician
- Forensics Lab Assistant
- Lab Technician
- Veterinary Care Assistant
- And more...

Visit [fife.ac.uk/science](https://fife.ac.uk/science) for more course information



## NEWS



Adel Olivier (National Certificate: Applied Science) is one of the recipients of the Angela Stewart-Grant Scholarship which was established in memory of former science student Angela, with recipients sharing £2,000 to support their studies.

*"I know that there are many deserving students, and to be chosen for a scholarship is a huge honour that I don't take lightly. I intend to use the money to purchase a laptop so that I no longer need to rely on a loan from the Fife College library. Having my own device will assist me in delivering consistently high-quality work."*

SCQF LEVEL	Science and Maths	Full-time	Part-time	Virtual Campus
4	National 4: Mathematics		●	
5	Preparation for National 5: Physics			●
5	Preparation for National 5: Mathematics		●	
6	Preparation for Higher: Mathematics		●	
SCQF LEVEL	Life Sciences			
5	National Certificate: Applied Science	●		
6	Advanced Certificate: SWAP Access to Health and Life Sciences	●		
6	Advanced Higher Preparation: Chemistry		●	
6	Advanced Higher Preparation: Human Biology		●	
6	National Certificate: Applied Sciences	●		
7	HNC: Applied Sciences (Biology)	●		
8	HND: Applied Biological Sciences	●		

Course listings are correct at time of printing, but may be subject to change. Please visit our website for the most up-to-date course information and campus locations.

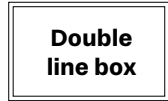
Science and Maths Course Planner

Key:

Progression route



Academies/  
Community Classes



College courses



School College  
Partnership courses



Courses share  
progression options



This planner shows possible routes of progression. For full entry requirements for each course, always check online.

Equivalent to National 4s

SCQF LEVEL

4

Equivalent to National 5s

SCQF LEVEL

5

Equivalent to Highers

SCQF LEVEL

6

Equivalent to Year 1 at  
University and Advanced Highers

SCQF LEVEL

7

Equivalent to Year 2  
at University

SCQF LEVEL

8

Equivalent to Year 3  
at University

SCQF LEVEL

9

Equivalent to Year 4  
(Honours) at University

SCQF LEVEL

10

Articulation to university

Fife College offers over 600 routes to a degree in partnership with a wide range of universities across Scotland and the UK.

These articulation routes, which are pathways between a full-time HNC or HND course to a degree course, are formally agreed between the College and the university to ensure a smooth transition to degree study.

This means that you could gain direct entry to year 2 at university from an HNC, and with an HND you could move straight to year 3.

Visit the degree pathways pages section of our website for further information.

National 4:  
Mathematics  
(Part-time)

Preparation  
for National 5:  
Mathematics  
(Part-time)

Preparation for  
Higher:  
Mathematics  
(Part-time)

Advanced Higher  
Preparation: Biology

Preparation for  
National 5: Physics

Advanced Higher  
Preparation:  
Chemistry

National Certificate:  
Applied Science

National Certificate:  
Applied Sciences

Advanced  
Certificate: SWAP  
Access to Health  
and Life Sciences

HNC: Applied  
Sciences  
(Biology)

HND: Applied  
Biological Sciences

Foundation  
Apprenticeship:  
Scientific  
Technologies  
(School College  
Partnership)

# SOCIAL SCIENCES

Are you curious about what drives human behaviour – why people think, act, and interact the way they do? Do you wonder how communities are shaped by culture, politics, and history, or how global issues like inequality and crime influence everyday life? Studying Social Sciences at Fife College gives you the chance to explore the complexity of the world around us, from individual psychology to wider social structures, from past events to present challenges, and from local issues to global systems.

Whether you're driven to address inequality, support others, shape policy, or simply gain deeper insight into human behaviour, this is an excellent place to begin.

## What kind of career could I have?

- Counsellor
- Primary School Teacher
- Probation Officer
- Psychologist
- Public Services Worker
- Social Worker
- And more...

Visit [fife.ac.uk/social](https://fife.ac.uk/social) for more course information.



## MEET YOUR LECTURERS



### Sara Haldane

HNC Social Sciences to BA (Hons):  
Social Sciences

*"After completing the HND in Social Sciences, I went on and did the final degree year with the Open University, following the pathway that's open from the College. And now I am back at Fife College working as a lecturer in Social Sciences with my old lecturers. I love every single minute of it. It was a natural fit for me!"*

SCQF LEVEL	Social Sciences	Full-time	Part-time
4	Certificate: Social Science and Self	●	
5	Intermediate Certificate: Pathway to Social Sciences	●	
5	Intermediate Certificate: Social Science and Self	●	
6	Advanced Certificate: Pathway to Social Sciences	●	
7	HNC: Social Sciences	●	
8	HND: Social Sciences	●	

Course listings are correct at time of printing, but may be subject to change. Please visit our website for the most up-to-date course information and campus locations.

Social Sciences  
Course Planner

Key:

Progression route  
.....➔

Academies/  
Community Classes

Double  
line box

College courses

Solid  
line box

School College  
Partnership courses

Filled  
in box

Courses share  
progression options

Dotted  
line box

This planner shows possible  
routes of progression. For full  
entry requirements for each  
course, always check online.

Equivalent to National 4s  
SCQF LEVEL  
4

Equivalent to National 5s  
SCQF LEVEL  
5

Equivalent to Highers  
SCQF LEVEL  
6

Equivalent to Year 1 at  
University and Advanced Highers  
SCQF LEVEL  
7

Equivalent to Year 2  
at University  
SCQF LEVEL  
8

Equivalent to Year 3  
at University  
SCQF LEVEL  
9

Equivalent to Year 4  
(Honours) at University  
SCQF LEVEL  
10

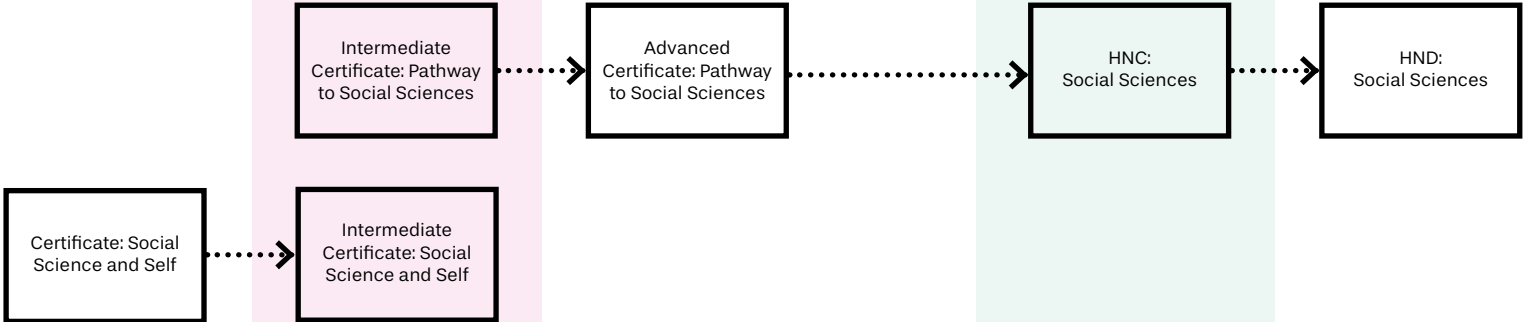
Articulation to university

Fife College offers over 600 routes to a degree in partnership with a wide range of universities across Scotland and the UK.

These articulation routes, which are pathways between a full-time HNC or HND course to a degree course, are formally agreed between the College and the university to ensure a smooth transition to degree study.

This means that you could gain direct entry to year 2 at university from an HNC, and with an HND you could move straight to year 3.

Visit the degree pathways pages section of our website for further information.





# SPORT AND FITNESS



Transform your passion for sport, coaching and fitness into a rewarding career supporting and motivating others to develop and realise their potential. Whether that means working with the next generation of sporting talent, contributing to local community initiatives, or supporting individuals to transform their lives, we have the course for you. Our courses cover the fundamentals of the industry, as well as more advanced components designed to help fitness professionals take their career further.

## What kind of career could I have?

- Active Schools Coordinator
- Fitness Instructor
- Football Development Officer
- Leisure Attendant
- Personal Trainer
- And more...

Visit [fife.ac.uk/sport](https://fife.ac.uk/sport) for more course information.



## STUDENT STORY



### Lee Robertson

HNC Sports Coaching and Development (Football Coaching)

*"The best thing about studying at Fife College is the facilities available, and the people who I have met. The lecturers and staff are very supportive. During my studying I was nominated and received the award for Grassroots Hero, from the Scottish Football Supporters Association for my contributions to football in my local community."*

SCQF LEVEL	Sport and Fitness	Full-time	Part-time
5	Intermediate Certificate: Sport and Fitness	●	
6	Advanced Certificate: Sport and Fitness (Fitness)	●	
6	Advanced Certificate: Sport and Fitness (Sports Coaching)	●	
6	Advanced Certificate: Football Studies	●	
7	HNC: Fitness, Health and Exercise	●	
7	HNC: Sports Coaching and Development (Football Coaching)	●	
7	HNC: Sports Coaching and Development (Multi Sport Coaching)	●	
8	HND: Sports Coaching and Development	●	
8	HND: Fitness, Health and Exercise	●	

Course listings are correct at time of printing, but may be subject to change. Please visit our website for the most up-to-date course information and campus locations.

**Key:**

## Double line box

## College courses

**Solid  
line box**

## School College Partnership courses

**Filled  
in box**

### Courses share progression options

**Dotted  
line box**

This planner shows possible routes of progression. For full entry requirements for each course, always check online.

Equivalent to National 4s

## SCQF LEVEL

4

Equivalent to National 5s

## SCQF LEVEL

# 5

### Equivalent to Highers

## SCQF LEVEL

6

Equivalent to Year 1 at  
University and Advanced Highers

## SCQF LEVEL

7

Equivalent to Year 2  
at University

## SCQF LEVEL

8

Equivalent to Year 3  
at University

## SCQF LEVEL

9

Equivalent to Year 4  
(Honours) at University

**SCQF LEVEL**

10

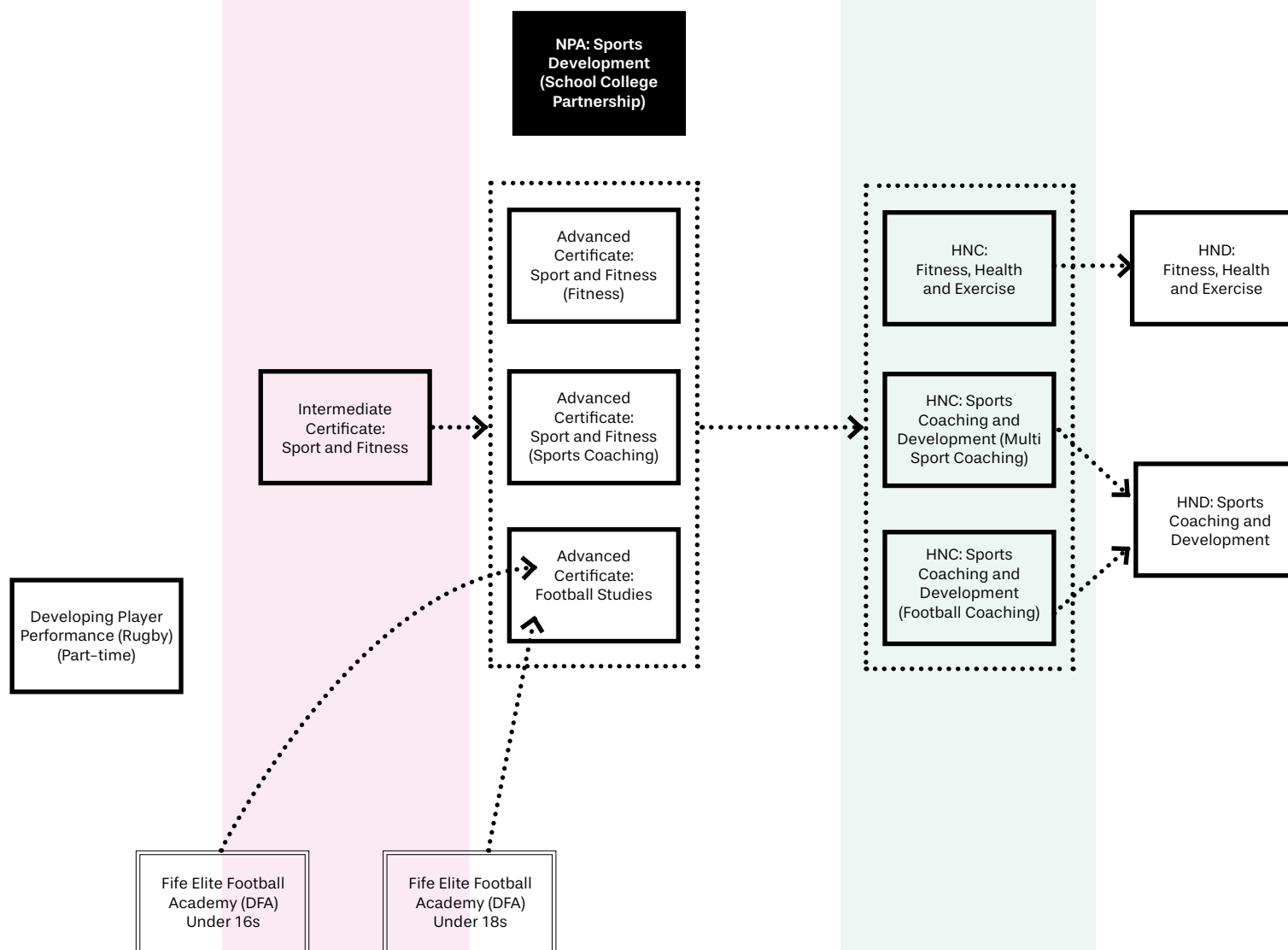
### Articulation to university

Fife College offers over 600 routes to a degree in partnership with a wide range of universities across Scotland and the UK.

These articulation routes, which are pathways between a full-time HNC or HND course to a degree course, are formally agreed between the College and the university to ensure a smooth transition to degree study.

This means that you could gain direct entry to year 2 at university from an HNC, and with an HND you could move straight to year 3.

Visit the degree pathways pages section of our website for further information.



# SUPPORTED LEARNING

Our Supported Learning Programmes at Fife College are designed for school leavers and young people with additional support needs who require extra help with learning. These courses provide a supportive, inclusive environment where students can develop essential life skills, employability skills, and confidence to progress into further education, training, or employment.

**Skills that you will develop include:**

- Confidence
- Employability
- Independence
- Life Skills
- Teamwork

Visit [fife.ac.uk/supported](https://fife.ac.uk/supported) for more course information.



## NEWS



*Our Supported Learning Programmes give learners fantastic opportunities to build skills while making a real difference in their communities. Students have taken part in sponsored walks, fundraising events, and creative community projects. One group raised £300 for EATS Rosyth, while others helped refurbish a dementia-friendly garden at Canmore Lodge, using practical construction and gardening skills, and another group designed and planted their own flowerbed at Pittencrieff Park. These projects help learners grow in confidence, teamwork, and real-world experience.*

SCQF LEVEL	Supported Learning	Full-time	Part-time
1	Award: Adult Learning and Transition	●	
2	Intermediate Award: Independent Lifeskills	●	
2	Intermediate Award: Personal Development	●	
3	National Certificate: Personal and Vocational Skills	●	
4	Certificate: Access to Employment		●
4	Certificate: Access to Further Education		●
4	Certificate: Passport to College		●

Course listings are correct at time of printing, but may be subject to change. Please visit our website for the most up-to-date course information and campus locations.

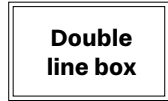
Supported Learning Course Planner

Key:

Progression route



Academies/  
Community Classes



College courses



School College Partnership courses



Courses share progression options



This planner shows possible routes of progression. For full entry requirements for each course, always check online.

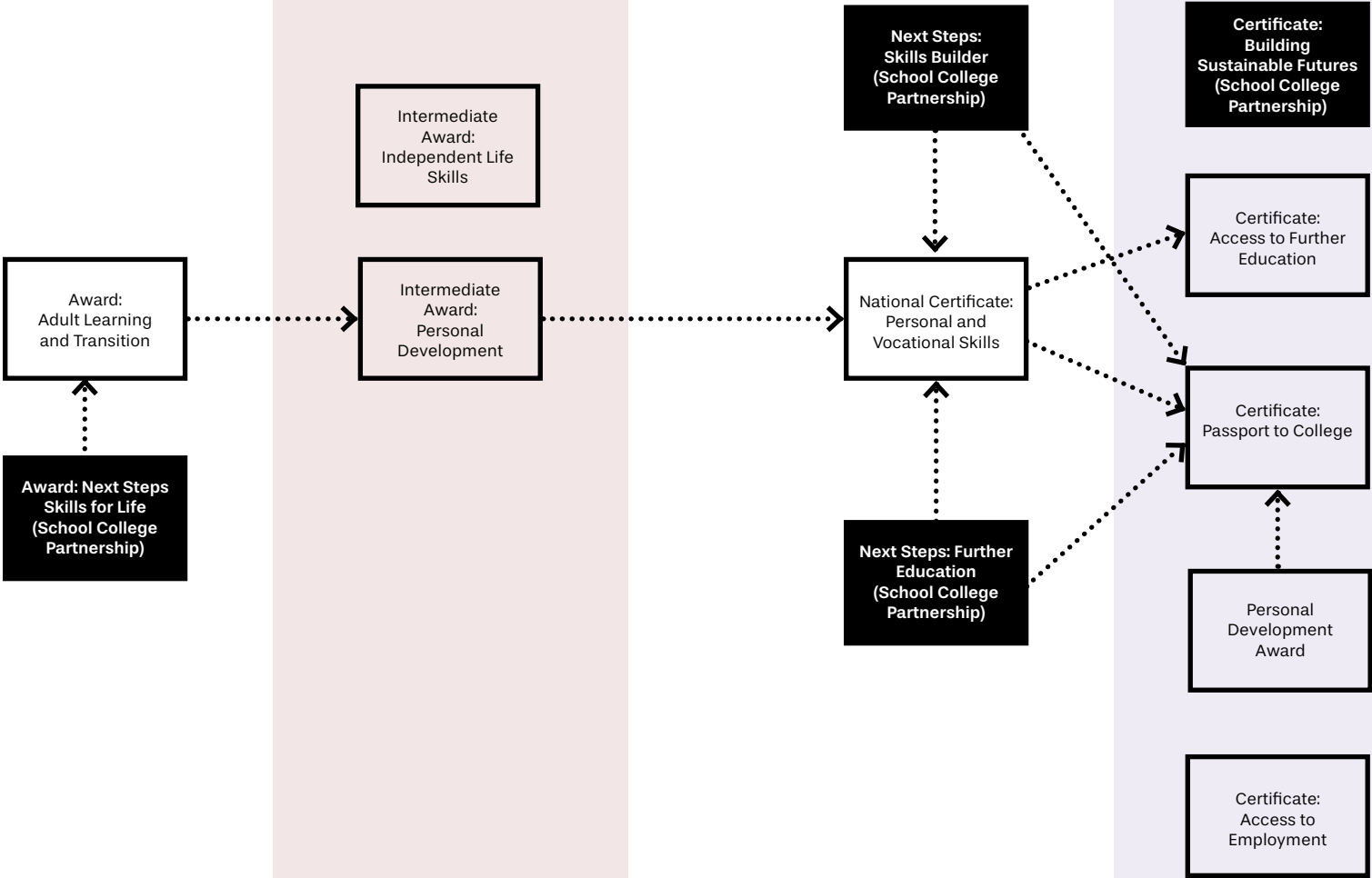
SCQF LEVEL  
1

SCQF LEVEL  
2

SCQF LEVEL  
3

Equivalent to National 4s  
SCQF LEVEL  
4

Equivalent to National 5s  
SCQF LEVEL  
5





# TRAVEL AND TOURISM

The travel and tourism industry offers a fast-paced career with worldwide opportunities where you can immerse yourself in a wide range of cultures promoting tourist destinations, leading events, and creating unique experiences for customers.

At Fife College, we are proud to be able to deliver first-class teaching to our students in the very best learning environment. Our purpose-built training facilities include a replica aircraft cabin and events spaces designed to equip you with industry-level experience and the skills to help you succeed in this exciting industry.

## What kind of career could I have?

- Airline Cabin Crew
- Conference Manager
- Events Manager
- Fundraiser
- Holiday Representative
- Hotel Receptionist
- And more...

Visit [fife.ac.uk/tourism](https://fife.ac.uk/tourism) for more course information.



## STUDENT STORY



**Caroline Francis**  
HNC Travel and Tourism

*"The course covers a lot of different subjects, from sustainability to marketing, business studies, being tour representatives and IT. It's been a really varied, interesting course and we've had numerous excellent opportunities, such as working at the Stanza Poetry Festival in St. Andrews."*

SCQF LEVEL	Travel and Tourism	Full-time	Part-time
4	Certificate: Skill up for Hospitality, Tourism and Events	●	
5	Intermediate Certificate: Travel and Tourism	●	
5	Intermediate Certificate: Sustainable Travel and Tourism	●	
6	Advanced Certificate: Tourism, Events and Business	●	
7	HNC: Travel and Tourism	●	

Course listings are correct at time of printing, but may be subject to change. Please visit our website for the most up-to-date course information and campus locations.

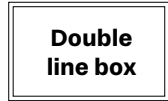
Travel and  
Tourism Course  
Planner

Key:

Progression route



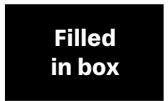
Academies/  
Community Classes



College courses



School College  
Partnership courses



Courses share  
progression options



This planner shows possible routes of progression. For full entry requirements for each course, always check online.

Equivalent to National 4s

SCQF LEVEL

4

Equivalent to National 5s

SCQF LEVEL

5

Equivalent to Highers

SCQF LEVEL

6

Equivalent to Year 1 at  
University and Advanced Highers

SCQF LEVEL

7

Equivalent to Year 2  
at University

SCQF LEVEL

8

Equivalent to Year 3  
at University

SCQF LEVEL

9

Equivalent to Year 4  
(Honours) at University

SCQF LEVEL

10

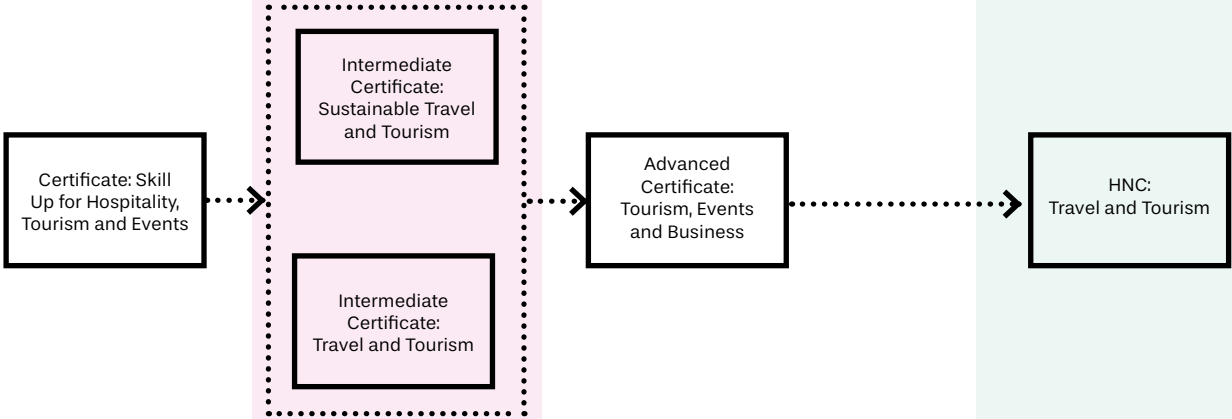
Articulation to university

Fife College offers over 600 routes to a degree in partnership with a wide range of universities across Scotland and the UK.

These articulation routes, which are pathways between a full-time HNC or HND course to a degree course, are formally agreed between the College and the university to ensure a smooth transition to degree study.

This means that you could gain direct entry to year 2 at university from an HNC, and with an HND you could move straight to year 3.

Visit the degree pathways pages section of our website for further information.



# SUPPORT SERVICES

Our aim is to support everyone who seeks to further their education, and to provide the best experience at college as we possibly can.

With that in mind, you'll find a wide range of student services available to support you during your studies, including:

## Admissions

Looking to speak to someone about your course application? Our Admissions team can support you with information about course applications, course interviews, or continuing on for another year if you are an existing student.

Call **0344 248 0115** or send an email to [admissions@fife.ac.uk](mailto:admissions@fife.ac.uk)

## Guidance

If you need to talk to someone in private about any issue during your time at Fife College, our Guidance team are here to help.

We've got a supportive team who can be available at every campus and are always happy to chat, listen and help.

See [fife.ac.uk/guidance](https://fife.ac.uk/guidance) for more details.

## Health and Wellbeing

We are committed to the provision of high-quality support for students to safeguard physical, emotional and mental wellbeing.

We have Health and Wellbeing advisors who can be available at each of our campuses, so help is never far away.

Email [healthandwellbeing@fife.ac.uk](mailto:healthandwellbeing@fife.ac.uk) for more information

## Inclusion

Everyone is entitled to take part in learning and to realise their own potential. If there is anything which could get in the way of your learning and participation at college, or you encounter a problem with learning, a good starting point is to talk to a member of your Inclusion team.

We have an Inclusion team available at Student Learning Hubs on every campus where you can drop in for advice and support when needed.

See [fife.ac.uk/inclusion](https://fife.ac.uk/inclusion) for more information.

## Support for Care Experienced Students

If you are Care Experienced, our Student Experience Team are there to help and support you prior to coming to college and throughout your student journey.

Head to [fife.ac.uk/careexperienced](https://fife.ac.uk/careexperienced) to read more.

## Cost of Living Support

We understand that the cost of living may be causing you some concern. However, we have a wide range of initiatives in place – including free breakfasts, free lunches, free use of digital devices and help with accessing hardship funds – to help make your time at college more affordable.

See [fife.ac.uk/cost-of-living](https://fife.ac.uk/cost-of-living) for more details.

## Attendance

We have a team of Attendance advisors who are here to help support you. They can work with you, your lecturers and your course tutors to make sure you are making it to all your classes or studying on your own so you don't fall behind on your course.

Email [attendance@fife.ac.uk](mailto:attendance@fife.ac.uk) for more information.

## Student Employability

It's our job to get you ready for the job you want. And we've got a great track record in graduate employability. The real skills for real jobs that you will learn here, along with our industry and business links, mean you're in the best possible place to go after the best job for you. Our Student Employability team is on hand at every campus to give you relevant and practical employability skills.

Visit [fife.ac.uk/employability](https://fife.ac.uk/employability) for more information.

## Campus Libraries

On every campus you can find the quiet space you need to focus on your studies.

Your student card will also be your library card, and it will let you use our fantastic facilities and make the most of a huge range of resources. Along with books that help with every part of your curriculum, and space to study, you'll find Wi-Fi and PC drop-in areas in every library.

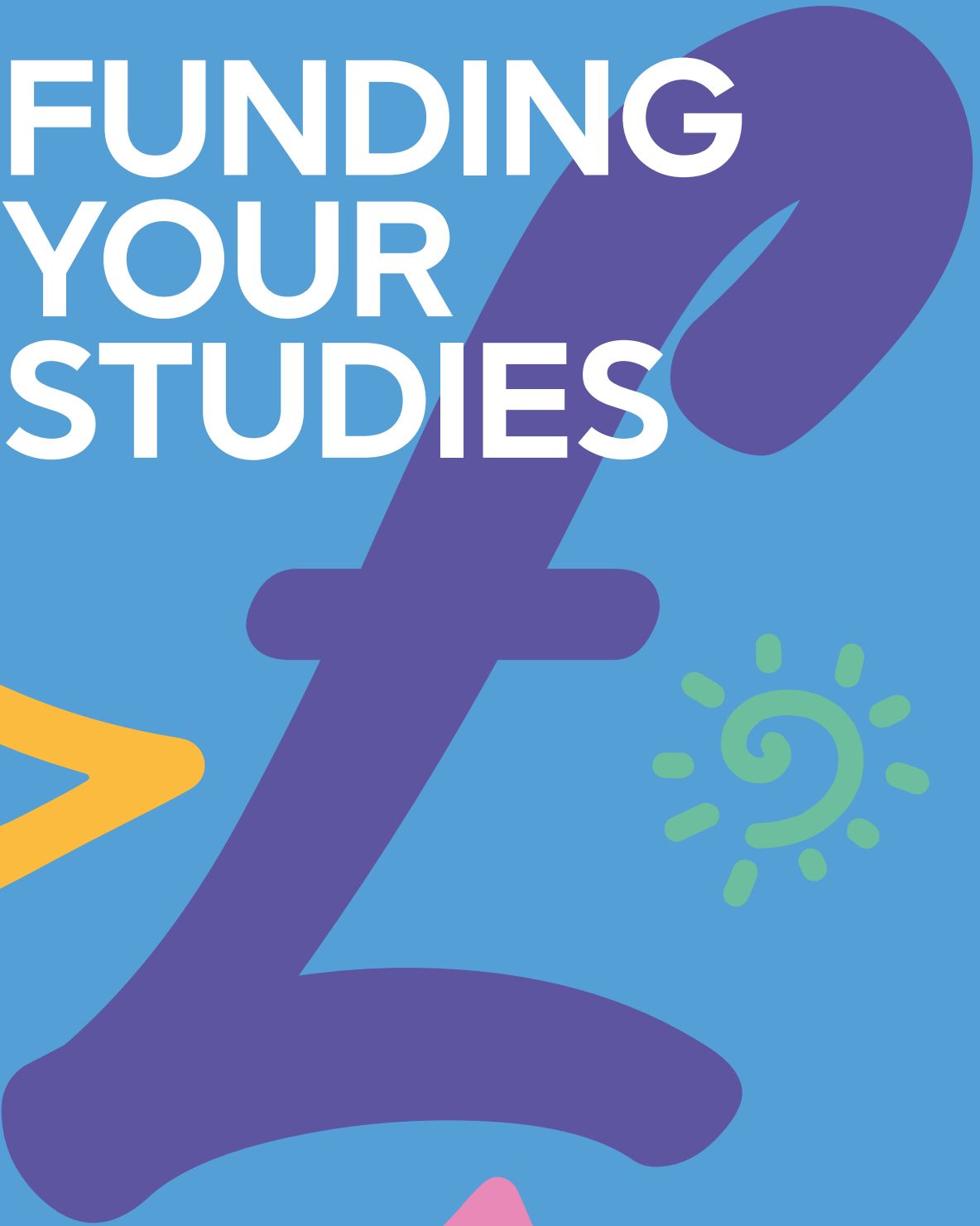
Visit [fife.ac.uk/libraries](https://fife.ac.uk/libraries) to read more.

## Customer Services

Have you got questions but don't know who to ask? Our front-of-house team are available on the main college number, by email, or at each of the reception desks with a friendly face. They can answer most questions – and if they can't, will always put you in touch with the person who can.

Call **0344 248 0115** or email [info@fife.ac.uk](mailto:info@fife.ac.uk)

# FUNDING YOUR STUDIES



Money and funding are big considerations for most students. So, if you need a hand deciding which is the right option for you to fund your studies, our Student Funding team is happy to chat and answer all your questions.

We advise that you apply for your funding as early as possible, and make sure everything is in place before the start of your course.

Our website has all the information you need on all the different kinds of funding support available – from bursaries and student loans to scholarships, assistance funds, and allowances.

Visit [fife.ac.uk/funding](https://fife.ac.uk/funding) for the most up-to-date information.

Depending on the level of course you study, you could be eligible for the following types of funding:

- Tuition fees paid
- Bursary
- Student loan
- Supplementary grants
- Travel expenses
- Assistance with childcare
- Disability support
- Individual Training Account (ITA)
- Council tax exemption/discount
- Assistance with rent/mortgage
- Part-time fee grant
- Care Experienced bursary



## Did you know?

You can also make an appointment to see one of our Funding Team if you need assistance with your funding application or have any questions regarding how to fund your studies. These bookable appointments can be made by either calling the main college number on 0344 248 0115 or emailing [studentfunding@fife.ac.uk](mailto:studentfunding@fife.ac.uk)



# SCHOLARSHIPS

## Scholarships available to help you with your studies

As a student at Fife College, you could benefit from our fantastic scholarship programme. We have around 30 scholarships available each year, funded by a range of companies and partners from Shell and Diageo to Ian Rankin and the Russell Trust.

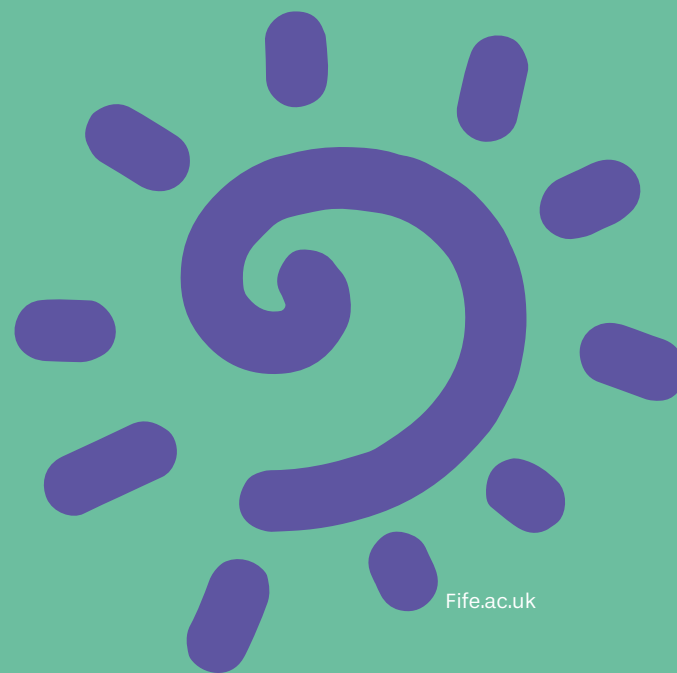
Thanks to our Adam Smith Scholarships programme, our students get the chance to gain some much-needed extra cash to buy the resources they need such as laptops, software, equipment and books. There are some amazing mentoring and placement opportunities too, both in the UK and abroad, including the USA.

Our scholarship awards also look great on a CV, helping our students stand out from the crowd as they progress their studies or career.

In 2024/25, we received almost 900 applications and awarded 239 deserving students scholarships, sharing funds of £87,859. Just think – next time, it could be you!

For further details head to [fife.ac.uk/scholarships](https://fife.ac.uk/scholarships) or email [scholarships@fife.ac.uk](mailto:scholarships@fife.ac.uk)

Since our scholarship programme began 28 years ago, we have awarded an amazing £1.5 million to almost 3000 students.



# THE FCSA

## Students' Association

When you study at Fife College, you automatically become a member of one of the best students' associations in Scotland!

The Fife College Students' Association (FCSA) is here to support you in every aspect of your college experience. Whether you need help with something in class, are looking for a way to expand your skills, or want to do something fun the FCSA is there for you.

Do you enjoy helping others? With the FCSA you can help to improve the college experience for everyone. You can become a class rep to make sure your classmates are well informed about everything happening in the College. You can also volunteer with the FCSA to help deliver events that help others.

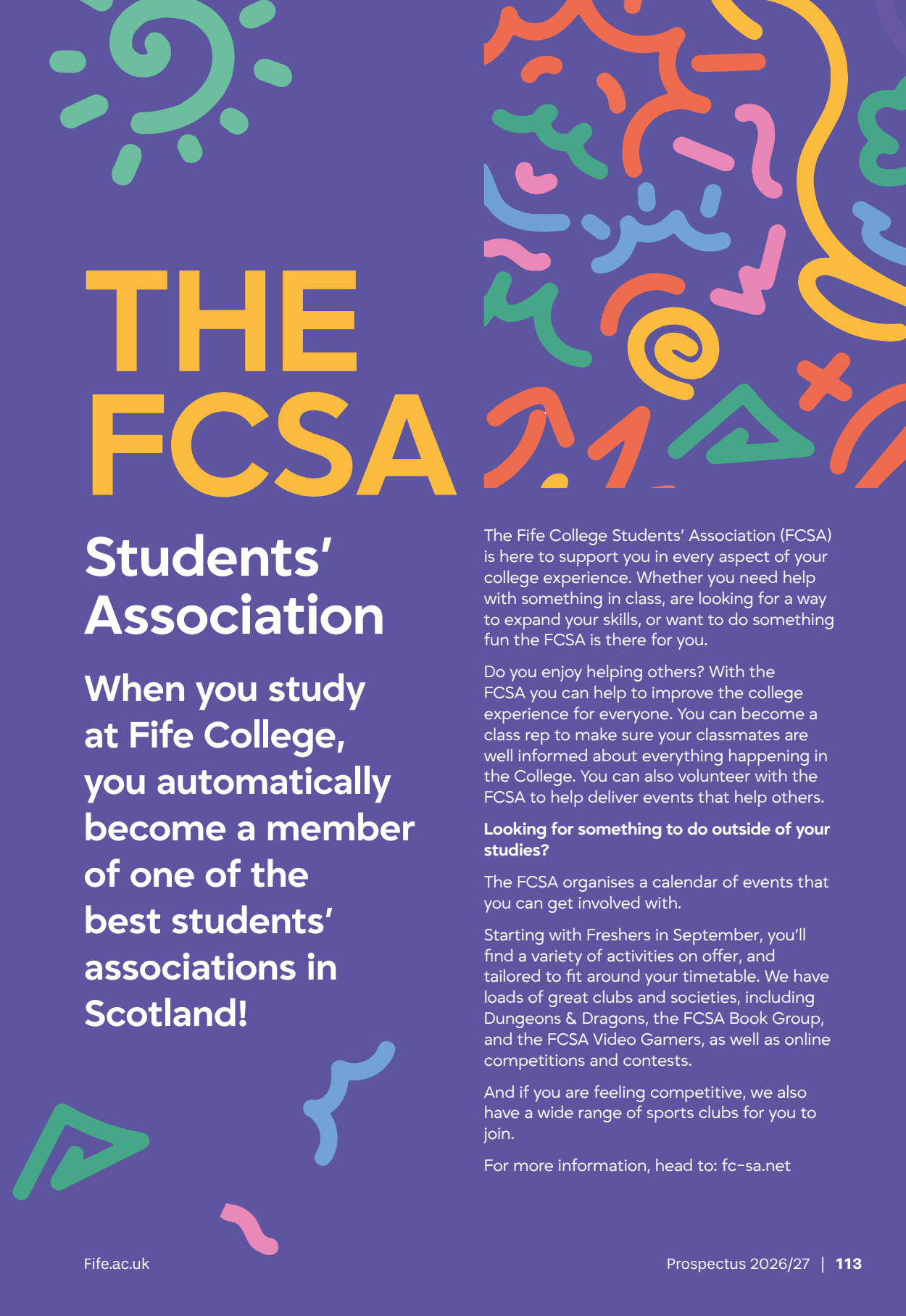
### Looking for something to do outside of your studies?

The FCSA organises a calendar of events that you can get involved with.

Starting with Freshers in September, you'll find a variety of activities on offer, and tailored to fit around your timetable. We have loads of great clubs and societies, including Dungeons & Dragons, the FCSA Book Group, and the FCSA Video Gamers, as well as online competitions and contests.

And if you are feeling competitive, we also have a wide range of sports clubs for you to join.

For more information, head to: [fc-sa.net](https://fc-sa.net)





# INDEX

<b>A</b>			
About Us	4	<b>J</b>	Jewellery 36
Access to College	28	<b>L</b>	Legal Services 32
Accounting	32	Life Sciences	88
Administration	40	Local Outreach Learning	78
Art and Design	36	<b>M</b>	
Automotive Engineering	60	Make-up Artistry	70
<b>B</b>		Mathematics	88
Barbering	70	Management	40
Beauty	70	Manufacturing Engineering	60
Built Environment	36	Mechanical Engineering	60
Business	40	Media Production	80
<b>C</b>		<b>O</b>	
Childhood Studies	44	Office Technologies	40
Computing	58	Our Campuses	8
Construction	52	Our Courses	26
Counselling	74	<b>P</b>	
Creative Media	80	Performing Arts	86
Culinary Arts	56	Physics	88
Cyber Security	48	Police Studies	32
<b>D</b>		<b>Q</b>	
Degree Pathways	16	Qualifications Explained	20
Digital Technologies	48	<b>S</b>	
<b>E</b>		Scholarships	112
Electrical Engineering	60	Science	88
Engineering	60	Social Care	74
English for Speakers of other Languages (ESOL)	66	Social Sciences	92
<b>F</b>		Sound Production	80
Fabrication and Welding	60	Sport and Fitness	96
FCSA - Your Students' Association	113	Students' Association	113
Fitness	96	Studying with us	12
Funding Your Studies	110	Support Services	108
Furniture	36	Supported Learning	100
<b>H</b>		<b>T</b>	
Hairdressing	70	Ten Reasons to Study at Fife College	10
Health Care	74	Travel and Tourism	104
Hospitality	56	<b>W</b>	
How to Apply	24	Wellbeing	74
<b>I</b>		What we offer	6
Interior Design	36		





**Fife.ac.uk**  
**0344 248 0115**  
**info@fife.ac.uk**



The information published in this guide was correct at the time of print.  
For the most up-to-date information, you should always check our website.

Published December 2025  
Fife College is a registered Scottish charity (No. SCO21203)