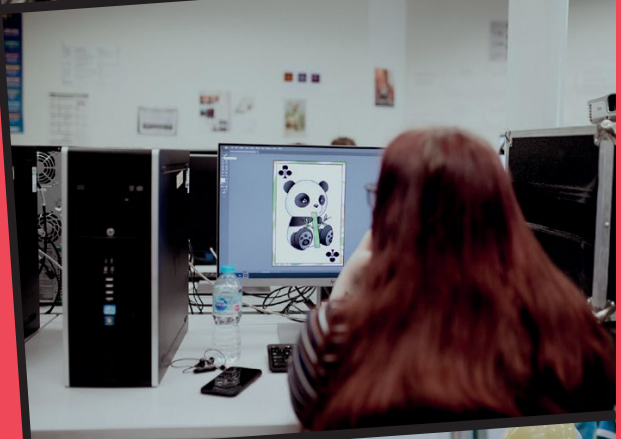




Fife College

# Unlocking the World of STEM!



## Activities for S3 to S6 Learners



### SpeedySTEM

Join Fife College and partners for an entire day of STEM activities. The events mix interactive engineering challenges, science experiments and construction techniques with talks and demonstrations from partner organisations, including industry representatives and universities.

- In school hall
- 75 to 100 learners per half day
- Half or full day
- Can be adapted for your school group



### Eco Housing

Engage learners through interactive exploration of energy generation within a home. The activity investigates the impact of various insulation systems on a home's energy efficiency and consumption. Additionally, learners explore options for incorporating renewable energy sources into residential structures.

- In school classroom
- 20 - 30 learners per session
- 2 / 3 periods



### Fuel Cell Electric Vehicle Explorer

This activity gives learners the opportunity to explore scientific topics related to renewable energy such as climate change, renewable energy solutions and energy storage while designing and building their own hydrogen powered cars in their teams. They will build self-awareness and also develop self-management skills.

- In school classroom
- 20 - 30 learners per session
- 2 / 3 periods



### Bridge Building

Through this activity learners gain an understanding of the principles of forces and equilibrium in physics, particularly as they apply to the construction of bridges. This engaging experience allows learners to directly relate to and comprehend the intricate dynamics involved in building and maintaining structural balance in bridges.

- In school classroom
- 20 - 30 learners per session
- 2 / 3 periods



### Turing Tumble

This activity allows learners to apply critical thinking skills while constructing functional machines. Using real-world applications of computational processes, the activity offers valuable insights into the outcomes outlined in CfE TCH3-14b and TCH3-15a, showcasing the practical integration of theoretical knowledge into tangible results.

- In school classroom
- 20 - 30 learners per session
- 2 / 3 periods

# Find out more about our School College Partnerships and Foundation Apprenticeships at [fife.ac.uk/schools](https://fife.ac.uk/schools)

**Fife.ac.uk**

**0344 248 0115**

**[stem@fife.ac.uk](mailto:stem@fife.ac.uk)**

The information published in this guide was correct at the time of print.  
For the most up-to-date information, you should always check our website.

Published October 2023

Fife College is a registered Scottish charity (No. SCO21203)