



Fife College



PROSPECTUS

2025

/26



FIFE'S
COMMUNITY
COLLEGE 

PAGE

3	Welcome to Fife College
4	About Us
6	What We Offer
8	Our Campuses
10	10 Reasons to Study at Fife College
12	Studying with us
16	Degree Pathways
20	Qualifications Explained
24	How to Apply
25	Our Promise to You

Our Courses

28	Access to College
32	Art, Design, and the Built Environment
38	Business, Management, and Accounting
44	Childhood Studies
50	Computing and Technologies
56	Construction and Building Services
60	Culinary Arts and Hospitality
66	Engineering and Energy
74	English for Speakers of Other Languages (ESOL)
78	Hair and Beauty
82	Health Care, Social Services and Life Sciences
90	Local Outreach Learning
94	Mathematics, Numeracy and Physics
98	Media Productions
104	Performing Arts
108	Social Sciences
112	Sport and Fitness
116	Supported Learning
120	Travel and Tourism
124	Support Services
127	Funding Your Studies
128	Scholarships
129	Students' Association
130	Index
131	Notes

The information published in this guide was correct at the time of print. For the most up-to-date information, you should always check our website.

Published December 2024
Fife College is a registered Scottish charity (No. SCO21203)



HELLO



Whether you are leaving school, returning to education, or looking to progress your career with additional skills and qualifications, we are so delighted that you are considering joining us!

We have a great range of study opportunities on offer – from professional training and apprenticeships through to higher education and technical qualifications. This is YOUR College, and we're here to help you maximise your skills, build the career you want, increase your earning potential, and so much more.

Our wide range of courses offer the flexibility to fit your studies around a busy home or work life, along with the added benefits of small class sizes, expert teaching, and fantastic links with dozens of local employers.

As one of our students, you will be central to everything we do. We deliver outstanding technical and professional education, closely matched to local industry demand and economic need. Record numbers of our students go on to employment or further study after successfully completing their studies with us – we hope you will join them on the path to a rewarding and successful future!

This is an incredibly exciting time to join Fife College, with a ground-breaking new learning campus in Dunfermline due to open during the 2025/26 academic year, as well as innovative new partnerships with businesses like Scottish Gas Network (creating the UK's first-ever hydrogen energy training facility for registered gas engineers); with Shell (to provide a new energy transition skills hub); with the UK Space Agency (as the first college in the UK to deliver geospatial skills training); as well as ongoing partnerships with the NHS and other national organisations, to provide greater training opportunities in Fife.

I hope you enjoy browsing all of the information contained within this prospectus, and I look forward to welcoming you as one of our students in 2025!

Jim Metcalfe
Principal





ABOUT US





- Home to over 20,000 students and 900 staff
- Our five campuses sit at the heart of the Kingdom – Dunfermline, Kirkcaldy, Glenrothes, Levenmouth and Rosyth
- We've got options for everyone – from starter courses and apprenticeships, through to HNC/HND and degree pathways, all with the flexibility of study to suit your needs
- 92% of our students enjoyed their time with us so much that they said they would recommend us to others
- We offer over 600 progression routes to a degree through our partnerships with universities all over the country
- We have our own University Hub in Dunfermline for degree study, plus dedicated areas at both Kirkcaldy and Glenrothes campuses
- Due to our strong links with local industries, we offer one of the biggest Modern Apprenticeship programmes across the Scottish college network, with over 400 places on offer
- Our prestigious Andrew Carnegie Business School offers professional qualifications and training courses in business, management and leadership
- Last year alone, over 300 of our students benefitted from our Adam Smith Scholarship awards



WHAT WE OFFER!



**COMMERCIAL
TRAINING
COURSES**



**ONLINE
COURSES**



400
FULL-TIME
AND PART-TIME
COURSES

**DEGREE
COURSES AND
600
UNIVERSITY
PATHWAYS**

**PROFESSIONAL
QUALIFICATIONS**



**STUDENT
SCHOLARSHIPS**



**INDUSTRY
STANDARD
EQUIPMENT**



**MODERN AND
FOUNDATION
APPRENTICESHIPS**



**LINKS WITH
LOCAL
INDUSTRY**



**SCHOOL COLLEGE
PARTNERSHIP
PROGRAMME**



**EMPLOYER
ADVICE FOR
TRAINING AND
FUNDING**



**CONFERENCE AND
EVENTS CENTRE**



OUR CAMPUSES

We are dedicated and committed to making your learning experience with us as meaningful as possible, which is why we continue to invest in providing innovative and inspiring campuses for you to learn and upskill within your industry throughout your career.

Here's just a selection of the fantastic facilities we have on offer for our students at our five main campuses across Fife:

1 Dunfermline

Located at Halbeath, our Dunfermline campus houses:

- Our University Hub, where you can study for your degree
- Our Media Centre, including photography studios and gaming studios
- A variety of construction, gas and science labs
- Hair and beauty salons
- Training kitchens and student-run Bistro restaurant
- As well as being the home to our Carnegie Conference Centre.

2 Kirkcaldy

Located at St Brycedale, our Kirkcaldy campus is home to:

- Business, events and tourism facilities
- Culinary arts, including state-of-the-art kitchens and our student-run Academy restaurant
- Our games hall and fully equipped gym
- Hair and beauty salons
- As well as a fully functioning theatre for our performing arts courses.

3 Glenrothes

Based at Stenton, our Glenrothes campus plays host to:

- Our Media Production Hub, plus professionally equipped studios and edit suites for sound, radio and screen production
- Training facilities for health, social care and childhood studies
- Jewellery workshops
- And a host of industry-spec construction, engineering and science labs.

4 Rosyth

Our campus at Rosyth is home to:

- Most of our engineering facilities
- New independent learning spaces
- The Shell Energy Transition Skills Hub
- A Nanogrid facility
- As well as increasingly catering for the digital and advanced manufacturing skills needed to meet the needs of the Fife workforce.

5 Levenmouth

- Care facilities, to train our next generation of "front-line heroes"
- A Hydrogen training facility in partnership with SGN
- Hair and beauty salons
- State-of-the-art kitchens
- As well as a Digital Skills Hub, and a Geospatial Skills Hub.

Our New Campus for Dunfermline City

A welcome addition in 2025 will be our fantastic new state-of-the-art campus in Dunfermline.

This first-class learning and teaching environment will further enhance our learners' experience, and engage with the industries in which we serve, benefiting the local community, and the wider Fife economy for years to come.

Opening
2025



Glenrothes

3

Levenmouth

5

Kirkcaldy

2

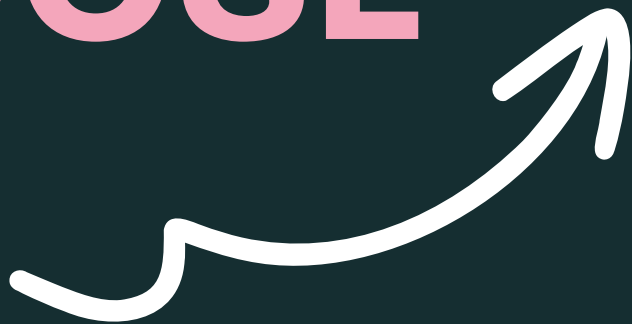
Dunfermline

1

Rosyth

4

TEN REASONS TO CHOOSE US



10

10 reasons to choose us

1

Fantastic range of courses

We offer over 400 courses across 40 different subject areas, so we're confident we've got something to suit your needs.

2

Superb facilities

Our first-rate facilities include fully kitted-out construction and engineering workshops, a media production hub, state-of-the-art training kitchens and customer-facing student-run restaurants, a recording studio, radio station, stage theatre, digital and computing labs, hair, beauty and make-up salons and even our own aircraft cabin!

3

Flexible learning options

Full-time study not an option? No problem! Our flexible study options (including online courses) help thousands of students every year to fit studying around their work and family commitments.

4

Strong links with local industry

We are located right in the heart of some of Scotland's fastest growing industries and where loads of exciting employment opportunities are emerging. We work closely with local industry to ensure our courses provide our students with the knowledge, skills and experiences they are looking for, both now and in the future.

5

Real-life learning environments

From industry-standard engineering equipment, real-life training kitchens and customer restaurants, to fully kitted-out care suites and media production hubs, we provide real-life learning environments to put your skills training into practice and prepare you for life after college.

6

Clear pathways to employment

An impressive 95% of our students progress to either employment or further study after completing their courses with us – one of the highest rates in Scotland.

7

University progression routes

More and more students are choosing an alternative route to university. Instead of committing to 3 or 4 years away in a new city, you can start studying locally with all the flexibility and affordability benefits that brings. With over 600 progression routes in place with university partners, progression on to Year 2 or Year 3 of a university degree after studying your HNC or HND with us couldn't be easier.

8

Excellent student support services

Our student support service teams – including health and wellbeing, guidance, inclusion and employability – are always happy to chat, listen and help to make your time at college as enjoyable and successful as possible.

9

Award-winning Students' Association

Fife College Students' Association (FCSA) is here to make sure you get the most out of college life, through events and initiatives supporting the positive health and wellbeing of all students.

10

...and if you are still not convinced

Just ask our students! With a student satisfaction score of 93% of full-time FE students in 2023/24 surveyed and an impressive 92% recommendation rate, you'd be mad to go anywhere else!



STUDYING WITH US

YOUR STUDY OPTIONS

We have a wide range of study options at Fife College, giving you the flexibility and choice to fit your studies around work and life commitments.

We have courses to fit all ages and we cater for a variety of life stages – take a look at the options available (below) and see which one works best for you.

School College Partnership (SCP)

You don't have to wait until you finish school to start thinking about what you want to do afterwards – you can get a head start on your future by studying one of our fantastic School College Partnership courses as part of your school timetable.

These courses are designed to help you develop the skills you'll need both for further study and for employment, and will help you become an independent, self-motivated, and creative critical thinker.

In many cases, signing up for an SCP course means you can study on a college campus where you'll experience college life, learn new skills in our state-of-the-art facilities, and study in vocational areas – like hospitality, digital, care, engineering, construction, and loads more.

All our courses are developed in line with universities and industry to ensure that you get the skills and qualifications you really need for your future career.

Visit fife.ac.uk/schools

Foundation Apprenticeships (FAs)

If you're a Fife school pupil in S5 or above, you can kick-start your career path with a Level 6 Foundation Apprenticeship (FA).

This innovative pathway provides a winning combination of real-life work experience and learning the skills that employers want. You'll gain an industry-recognised qualification at SCQF Level 6.

An FA at SCQF Level 6 is also a recognised entry requirement for a Modern Apprenticeship or degree-level study, so it can help you progress on to a career or further study.

We have 11 Foundation Apprenticeships available in partnership with Fife Council and Skills Development Scotland (SDS), so you can choose from a range of practical courses, providing a pathway to careers in sectors such as creative and digital media, scientific technologies, engineering, accountancy and business skills.

Find out more at fife.ac.uk/foundation or email the SCP and FA team directly at scp@fife.ac.uk

YOUR STUDY OPTIONS



Full-time study

Studying full-time is usually the quickest way for you to complete your qualification. It generally means you will attend college for 3–4 days a week, although this varies from course to course.

All our courses are designed to give you the best possible start to your chosen career – often including practical experience in your field.

Go to fife.ac.uk/courses for a full list of our available courses, or choose to browse by subject area

Part-time study

Not everyone is able to commit to full-time study. If you've got a busy life, with family and work commitments, it's not always easy to find the time.

That's why we offer a range of part-time courses that better fits around your lifestyle and helps you learn something new and get the skills you need for the job you want.

You can choose to study a range of courses, from introductory level to HNC/HNDs and degrees, on a part-time basis to fit your studies around your other commitments. Whether day, evening, weekend, distance learning, online, or work-based learning suits you best, we are here to help you find the right option for you. Some courses are even available to apply for at any time of the year, so you can take that first step to your new career whenever you feel ready.

And with plenty of funding options available to you to support you with any costs, you will find that getting the qualification you need is within your reach!

Head to fife.ac.uk/part-time for more information.

Scottish Wider Access Programmes (SWAP)

SWAP courses are for adults who have few or no formal qualifications and who have been out of full-time education for at least three years.

SWAP courses are designed to give adult learners intensive academic preparation as well as the opportunity to develop the skills and confidence required to study at Higher Education level.

All of our SWAP courses are studied full-time for one year and are designed to prepare you for entry into HNC/HND or degree study through recognised progression routes at Fife College, and at other colleges and universities across Scotland.

Visit fife.ac.uk/SWAP for more info.

Short-Term online courses

Throughout the year, we run a variety of short, online, flexible learning courses designed to help refine your core skills and also to learn new skills for specific industry sectors.

These courses are specifically designed to help you enhance your employability prospects and hopefully maximise your potential for career prospects and job opportunities.

Look out for our latest course offerings at fife.ac.uk

Modern Apprenticeships (MAs)

Modern Apprenticeships (MAs) are the perfect way to get a job, get paid, and get qualified all at the same time.

It's a qualification you work towards whilst in a job and earning a salary. It's a fantastic way to get the skills you need to build the career you want. And it's perfect for ambitious people who want to succeed in their chosen industry.

We deliver MAs in a lot of different industries – not just the ones you'd traditionally associate with apprenticeships.

All our MA courses are developed to fit the needs of their specific industries – which means they're very popular with employers who come to us looking for the best, most enthusiastic students to join them.

You get to learn a broad range of useful, transferable skills that you can take with you when you move on to the next level of your career. And by learning on the job, you get amazing experience plus a nationally recognised certification that will look great on your CV.

With an MA, you'll get to work with people who want to work with you. We join forces with local and national employers to develop and run our apprenticeship programmes. So, as you make your way in the world of work, you will develop all the skills, accreditations, qualifications, and attitudes your employer is looking for.

Our partnerships and close links with industry also mean there are lots of opportunities for work experience and the chance to get invaluable hands-on practical experience in actual work settings. All of which helps make your dream job a reality through studying with Fife College.

Learn more at fife.ac.uk/MAs

Professional Qualifications

Delivered by our prestigious Andrew Carnegie Business School, we provide access to an impressive portfolio of professional qualifications across a wide range of management and leadership disciplines accredited by leading professional institutions.

With qualifications ranging from certificate to postgraduate level, we are able to provide you with the opportunity to undertake a wide range of professional development qualifications essential for today's challenging business environment.

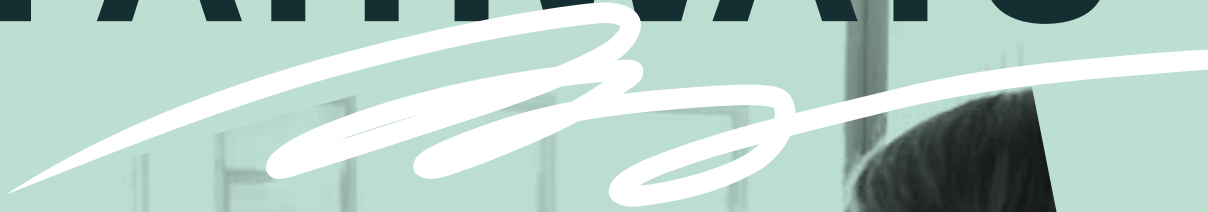
All our programmes are designed to offer current, contemporary qualifications with a practical focus. From Management and Leadership to Accounting, Human Resource Management and Project Management, our courses cover a wide range of specialisms for all sectors.

See fife.ac.uk/ACBS for more details.





DEGREE PATHWAYS



The flexible alternative to university, offering you the stepping stones to a degree

The higher education landscape has changed rapidly in recent years, with more and more students choosing to come to college to study for their higher education qualifications, including degrees.

At Fife College, we offer around 100 HNC and HND courses, with over 600 progression routes to degree courses both here at your local campus and at partner colleges and universities. The benefits of taking the college route to a degree include:

- ➔ **No need to commit to 3-4 years of study at university – take each year at a time**
- ➔ **Gain a recognised qualification for every year of study**
- ➔ **Study closer to home, keeping living, travel and study costs to a minimum**
- ➔ **Enjoy smaller, more focused class sizes than at university**
- ➔ **It's local, flexible, affordable...and enjoyable!**

DEGREE PATHWAYS

Higher National Qualifications – HNCs/HNDs

HNCs and HNDs are the equivalent level to years 1 and 2 at university, respectively. But they mean you get to study in a more flexible way that suits you and your plans for the future.

One of the many great things about studying at Fife College is that you don't have to commit to three or four years of continuous study like you would at university. You can just take it year by year, and see how you get on.

Because you finish each year with an industry recognised qualification, you have a qualification that could take you straight into a job. Or you could go on to study for your ordinary degree or honours degree, with us or via one of our partner universities. Plus you have the flexibility to take a break and consider what to do next.

If you choose to study for your HNC and HND at Fife College and then progress onto a degree programme starting in year 2 or 3, you will still achieve the same degree or honours degree qualification as your friends who went straight to university to study from year 1.

But here at Fife College, you'll be able to study in a smaller class, allowing you to get more help and support from your lecturers. Because you'll be studying locally, you can keep your living, travel, and study costs down.

Plus, you may be able to study on a part-time basis, at evenings or weekends, if that's what fits in best with your life.

Find out more at fife.ac.uk/degrees

Going on to university

If you want to carry on with your studies, Fife College is the perfect stepping stone to university.

Where there is an articulation route in place, you can move from an HNC or HND to year 2 or 3 of a degree without having to re-learn the same things or repeat a year of study.

While you are at college you will get information from our partner universities, at events or through visiting speakers, to help you make an informed choice about the right course to move on to.

And you'll get the chance to develop all the independent study and research skills you'll need to thrive when you go to university.

Learn more at fife.ac.uk

Study your full degree with us

Thanks to our close links with partner universities, you can study for a complete degree right here on your doorstep.

This means you can keep all of your costs down, but also benefit from using university facilities like libraries, open days, and even some lectures, and you'll get a fully accredited ordinary degree or honours degree awarded by the university at the end of your studies.

Dedicated degree study space

We know that the environment that you learn and study in is important.

Our University Hub in Dunfermline has been designed specifically to help you to feel comfortable and focused in your studies. We also have dedicated areas for degree study within our Kirkcaldy and Glenrothes campuses.



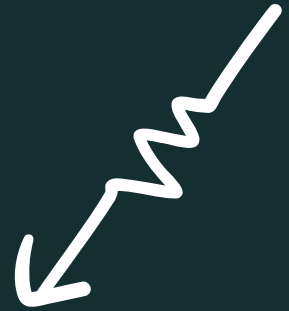
6000

Over 600 routes to degree courses available




15

Degree partnerships
with 15 universities
and colleges



Who says you can't
study towards a
degree at college?
We say you can!



QUALIFI- CATIONS EXPLAINED



All you need to know
about the different
levels of qualifications
on offer.

Like all Scottish universities and colleges, we use the Scottish Credit and Qualifications Framework (SCQF) levels to describe our courses.

It shows how you can build up a series of points (known as "credit points") to gain the qualification you want, transfer these credits onto other courses, and compare levels across different courses and qualifications.

Remember - there's no one set or right way to progress through school, college, university and into the job you want. And one of the benefits of college is how flexible your route can be, with so many options available to suit your own circumstances. You can even take time out of your studies and pick them up again at a later stage.



Further Education (FE) qualifications

Certificate courses

Broadly comparable to SCQF Level 4 – the equivalent level to National 4s

Certificate courses are the perfect stepping stone for those with no or few formal qualifications. They are a cluster of units, mainly at SCQF Level 4, that will give you an appropriate set of skills and knowledge to progress on to the next SCQF level.

Intermediate Certificate courses

Broadly comparable to SCQF Level 5 – the equivalent level to National 5s

Intermediate Certificate courses contain a cluster of units, mainly at SCQF Level 5, that will give you an appropriate set of skills and knowledge to progress to the next SCQF level.

Advanced Certificate courses

Broadly comparable to SCQF Level 6 – the equivalent level to Highers

Advanced Certificate courses are a cluster of units, mainly at SCQF Level 6, that will give you an appropriate set of skills and knowledge to progress to the next SCQF level in your education or chosen career path.

These courses are made up of a cluster of units and successful achievement of these will provide you with all the knowledge you need to progress to a higher level of course in your chosen subject area, or into your chosen career path. Many of these units are accredited by an awarding body and the course may even include a small group award (e.g. – a National Progression Award) but they do not result in a large formal award like a National Certificate.

National Certificate courses

These courses hold a nationally recognised group award qualification at SCQF Levels 4, 5 or 6 and can be used as a stepping stone to employment or on to further study at a higher SCQF level.



Higher Education (HE) qualifications

Higher National Certificates (HNC)

SCQF Level 7 – the equivalent to year 1 at university.

HNCs are normally completed in one year full-time or in two years with part-time study. Upon successful completion of an HNC, you have options which may include progressing to an HND at Fife College, to a degree with one of our partner universities (often entering the degree course in year 2), or into employment.

Higher National Diplomas (HND)

SCQF Level 8 – the equivalent to year 2 at university.

An HND is two years of study if done as a full-time course. If you're progressing from HNC, you will go straight into the second and final year of the HND. It gives you the option of progressing through to a degree (often entering year 3 of the degree course) or into employment.

Degrees

SCQF Levels 9 (Degree) and 10 (Honours Degree).

As well as routes to a wide range of degree courses at other institutions, with the benefit of studying the first one or two years locally, by working alongside our partner universities, we offer a great range of degrees right on your doorstep at Fife College campuses, so that you can study your whole degree with us in Fife. These degrees are awarded by our university partners so are the same as those issued to their own students.


Glossary of other qualifications

- SVQ – Scottish Vocational Qualification
- NVQ – National Vocational Qualification
- National 4s, National 5s and Highers

Note: An Honours degree in Scotland takes 4 years of full-time study to complete, but in the English system an Honours degree takes 3 years.

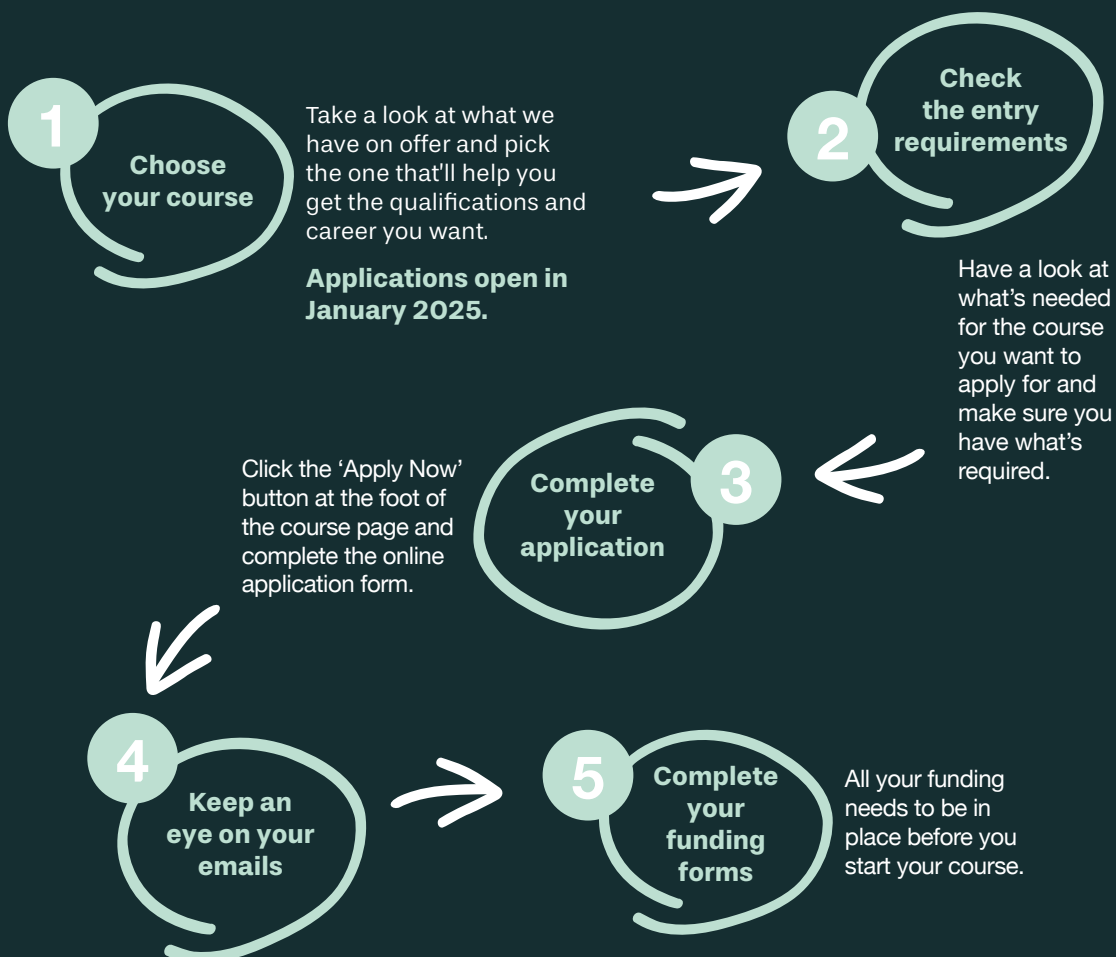


The Scottish Credit and Qualifications Framework

SCQF Levels	SQA Qualifications			Qualifications of Higher Education Institutions	Apprenticeships and SVQs
12	 <p>For more information on the SCQF framework visit www.scqf.org.uk</p>		Professional Development Award	Doctoral Degree	Professional Apprenticeship
11			Professional Development Award	Masters Degree, Integrated Masters Degree, Post Graduate Diploma, Post Graduate Certificate	Graduate Apprenticeship, Professional Apprenticeship, SVQ
10			Professional Development Award	Honours Degree, Graduate Diploma, Graduate Certificate	Graduate Apprenticeship, Professional Apprenticeship, SVQ
9			Professional Development Award	Bachelors/Ordinary Degree, Graduate Diploma, Graduate Certificate	Graduate Apprenticeship, Technical Apprenticeship, SVQ
8		Higher National Diploma, Advanced Diploma	Professional Development Award	Diploma Of Higher Education	Higher Apprenticeship, Technical Apprenticeship, SVQ
7	Advanced Higher, Awards, Scottish Baccalaureate	Higher National Certificate, Advanced Certificate	Professional Development Award	Certificate Of Higher Education	Modern Apprenticeship, SVQ
6	Higher, Awards, Skills for Work Higher	National Certificate	Professional Development Award National Progression Award		Modern Apprenticeship, Foundation Apprenticeship, SVQ
5	National 5, Awards, Skills for Work National 5	National Certificate	National Progression Award		Modern Apprenticeship, SVQ
4	National 4, Awards, Skills for Work National 4	National Certificate	National Progression Award		SVQ
3	National 3, Awards, Skills for Work National 3	National Certificate	National Progression Award		
2	National 2, Awards	National Certificate	National Progression Award		
1	National 1, Awards				

HOW TO APPLY

Your step-by-step guide to applying for a course at Fife College.



We'll send you any interview invite or offer by email (watch your junk mailbox too, just in case). If you receive an offer please accept it asap!

Hints and tips

We make it quick and easy to apply for the course you want. To help make sure you get on your course, here's a few dos and don'ts to remember.

DO be ready to get your application in. Once applications are open in January 2025, the sooner you apply the better your chance of getting on the course you want.

DO think about the course you want to do the most. You can apply for more than one course, but you can only accept one offer. And only one application will be progressed at any one time. So to give you the best chance of getting on the course you really want, have a think about which one is best suited to you and your plans for the future.

DO keep checking your emails. When you apply online, we'll keep in touch with you by email. But remember to check your junk email folder just in case our email has ended up there.

DON'T wait for all your exam results. Conditional offers for places can be given subject to you passing your exams, so you can apply before you get your results.

DON'T feel you need to do it all in one go. Once you've set up your login details, you can return to your application form at a later date from the Applications tab on the top bar of our website, so you don't have to do it all in one sitting. Just remember your username and password!

DON'T panic about interviews. This is also your chance to speak to course staff face-to-face and ask any questions you have.

Need some help?

If in doubt...ask!

There are lot of options so take your time to decide. If you need a bit of help or advice, feel free to give us a call for a chat on **0344 248 0115** or email **info@fife.ac.uk**.

They'll happily chat you through your options.



PROMISE

Our promise to you

We will guarantee an offer of a place to all eligible school leavers in the Fife region who submit an application by 31 March 2025.

We promise that we will help every school pupil who meets the minimum entry requirements to find a suitable course which suits their individual circumstances in order to help them achieve their potential.



OUR COURSES



CONTENTS

28	Access to College
32	Art, Design, and the Built Environment
38	Business, Management, and Accounting
44	Childhood Studies
50	Computing and Technologies
56	Construction and Building Services
60	Culinary Arts and Hospitality
66	Engineering and Energy
74	English for Speakers of Other Languages (ESOL)
78	Hair and Beauty
82	Health Care, Social Services and Life Sciences
90	Local Outreach Learning
94	Mathematics, Numeracy and Physics
98	Media Productions
104	Performing Arts
108	Social Sciences
112	Sport and Fitness
116	Supported Learning
120	Travel and Tourism

ACCESS TO COLLEGE

Whether you're looking to get that dream job you have always wanted, or need additional qualifications to fulfil your dream of studying at degree level – we have the right course for you. And it is never too late to return to studying!

At Fife College we offer courses at level 5 (equivalent to National 5s) and level 6 (equivalent to Highers) which are designed to help you move onto HNC, HND or degree level study.

Whether you choose full-time or part-time learning, our flexible options ensure that you can fit studying around your life. And for those with minimal qualifications, our Start Here for Qualifications courses offer invaluable support.

What route can I take to my ideal career?

You can start at SCQF Level 4 (the equivalent to National 4s) and progress through to SCQF Level 6 (equivalent to Highers). This could give you the qualifications you need to apply for HNC/HND study and on to year 2/3 of a degree at Fife College or one of our partner universities, or move into employment.

Visit fife.ac.uk/
access for more
course details.




STUDENT STORY

Sarah Ritchie

- Advanced Certificate:
SWAP Access to Health and Life Sciences

This course was able to bridge that gap for me as I progressed from National 5 level onto Higher. The lecturers have been excellent in preparing me in my personal and academic development. I always knew what I wanted to do, and my lecturers helped me to get there.

A photograph of Sarah Ritchie, a smiling woman with glasses, wearing a white lab coat. She is standing in a laboratory setting with various pieces of equipment. The photo is tilted and partially overlaps the text.

"I decided to study this course because I had spent quite some time away from education, and I wanted to go back to university."

SCQF LEVEL	Access to College	Full-time	Part-time
4	Certificate: Start Here for Care and Social Care		G
4	Certificate: Start Here for Social Science and SWAP	D	K
5	Intermediate Certificate: Child, Health and Social Care	K D L G	
6	Advanced Certificate: SWAP Access to Health and Life Sciences	D	
6	Advanced Certificate: SWAP Access to Nursing	K D G	

KEY **D** Dunfermline **K** Kirkcaldy **G** Glenrothes **L** Levenmouth **R** Rosyth

School College Partnership courses offered within Access to College include:

- Introduction to Criminology SCQF Level 5
- National Progression Award: Criminology SCQF Level 6

Please note: School College Partnership courses vary by High School. Please check with your own High School to see which courses are available.



Course listings and campus locations are correct at time of printing, but may be subject to change. Please visit our website for the most up-to-date course information.

Please note: due to the opening of our new campus in Dunfermline, it is possible that students studying at the current Dunfermline campus may relocate to the new campus part way through the academic year 2025/26. This information will be communicated to all course applicants and available on our website once confirmed.

Access to College Course Planner

Equivalent to National 4s

SCQF LEVEL

4

Equivalent to National 5s

SCQF LEVEL

5

Equivalent to Highers

SCQF LEVEL

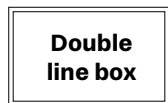
6

Key:

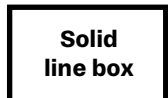
Progression route



Academies/ Community Classes



College courses



School College Partnership courses



Courses share progression options



This planner shows possible routes of progression. For full entry requirements for each course, always check online.

Certificate:
Start Here for Care
and Social Care



Intermediate
Certificate: Child,
Health and Social
Care

Advanced Certificate:
Pathway to Social
Sciences

Advanced Certificate:
SWAP Access to
Health and Life
Sciences

Advanced Certificate:
SWAP Access to
Nursing

Certificate:
Start Here for Social
Science and SWAP

Introduction to
Criminology
(School College
Partnership)

NPA: Criminology
(School College
Partnership)

Equivalent to Year 1 at University and Advanced Highers

SCQF LEVEL

7

Equivalent to Year 2 at University

SCQF LEVEL

8

Equivalent to Year 3 at University

SCQF LEVEL

9

Equivalent to Year 4 (Honours) at University

SCQF LEVEL

10

Articulation to university

Fife College offers over 600 routes to a degree in partnership with a wide range of universities across Scotland and the UK.

These articulation routes, which are pathways between a full-time HNC or HND course to a degree course, are formally agreed between the College and the university to ensure a smooth transition to degree study.

This means that you could gain direct entry to year 2 at university from an HNC, and with an HND you could move straight to year 3.

Visit the degree pathways pages section of our website for further information.

Wide range of HNC courses



Wide range of degrees in SWAP East (college and university partnership)

ART, DESIGN AND THE BUILT ENVIRONMENT

At Fife College, we will provide you with more than just the knowledge and skills you need to paint your dreams. All that we ask is that you bring your boundless imagination and motivation. Our art, design and jewellery courses offer a dynamic blend of hands-on experience and in-depth exploration of the terminologies, techniques, and essential skills necessary to succeed in these vibrant industries.

Whether your goal is to carve out a fulfilling career path or to launch your own creative venture, our courses will equip you with the expertise and confidence to succeed.

What kind of career could I have?

- Animator
- Artist
- Entrepreneur
- Etsy Seller
- Interior Designer
- Jewellery Designer
- Product Designer
- And many more...

Visit fife.ac.uk/art for more course details.



The Built Environment refers to the aspects of our surroundings that are built by humans. It creates where we live, where we play and where we work. From historical and cultural buildings, to shops, connecting our cities, enabling our travel, entertainment, protecting listed buildings and providing energy – it's all together a fantastic industry to work in!

So, if your ambition is to build a career in construction, we can offer you a solid foundation in whichever area interests you.

What kind of career could I have?

- 3D Designer
- Architectural Technician/Technologist
- Construction Manager
- Interior Designer
- Quantity Surveyor
- Site Manager
- Furniture Designer
- And many more...



Visit fife.ac.uk/built for more course details.

What route can I take to my ideal career?

You can start at SCQF Level 5 (the equivalent to National 5s) and progress through HNC/ HND and on to year 3 of a degree at one of our partner universities, or move into employment.

SCQF LEVEL	Art, Design and the Built Environment	Full-time	Part-time
5	Intermediate Certificate: Art and Design Portfolio	K	
5	National Certificate: Furniture	G	
6	Advanced Certificate: Art and Design	G	
6	Advanced Certificate: Jewellery	G	
6	National Certificate: Architecture with Interior Design	G	
7	HNC: 3D Design (Furniture and Product Design)	G	
7	HNC: 3D Design (Interiors)	G	
7	HNC: Architectural Technology	G	G
7	HNC: Art and Design	G	
7	HNC: Construction Management		G
7	HNC: Jewellery	G	
7	HNC: Quantity Surveying	G	G
8	HND: 3D Design (Furniture and Product Design)	G	
8	HND: 3D Interior Design	G	
8	HND: Architectural Technology	G	
8	HND: Art and Design	G	
8	HND: Jewellery	G	
8	HND: Quantity Surveying	G	G

KEY **D** Dunfermline **K** Kirkcaldy **G** Glenrothes **L** Levenmouth **R** Rosyth

School College Partnership courses offered within Art, Design, and the Built Environment include:

- Intermediate Certificate: 3D Design (Furniture, Interior and Product) SCQF Level 5
- National Progression Award: Jewellery Basic Techniques SCQF Level 5

Please note: School College Partnership courses vary by High School. Please check with your own High School to see which courses are available.

Course listings and campus locations are correct at time of printing, but may be subject to change. Please visit our website for the most up-to-date course information.

Please note: due to the opening of our new campus in Dunfermline, it is possible that students studying at the current Dunfermline campus may relocate to the new campus part way through the academic year 2025/26. This information will be communicated to all course applicants and available on our website once confirmed.

STUDENT STORY

Kevin Ferguson

- Advanced Certificate: Jewellery
- HNC: Jewellery
- HND: Jewellery

The course at Fife College has enabled me to express myself through industry related work to a level that I am happy with. I come from a fine art background which was painting; however, my knowledge and skills were lacking in how I produced jewellery and metal. Since studying at Fife College, I am confident I am now proficient at both.

The jewellery course offered all the skills I wanted to learn. Once I signed up, I found the teaching staff to be so supportive and inspiring and that made me want to continue my progression from Level 6 to HND.

"I started at Fife College two years ago and that is the reason why I have my own shop today."



Art, Design and the Built Environment Course Planner

Equivalent to National 4s

SCQF LEVEL

4

Equivalent to National 5s

SCQF LEVEL

5

Equivalent to Highers

SCQF LEVEL

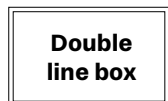
6

Key:

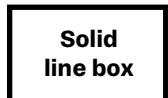
Progression route



Academies/ Community Classes



College courses



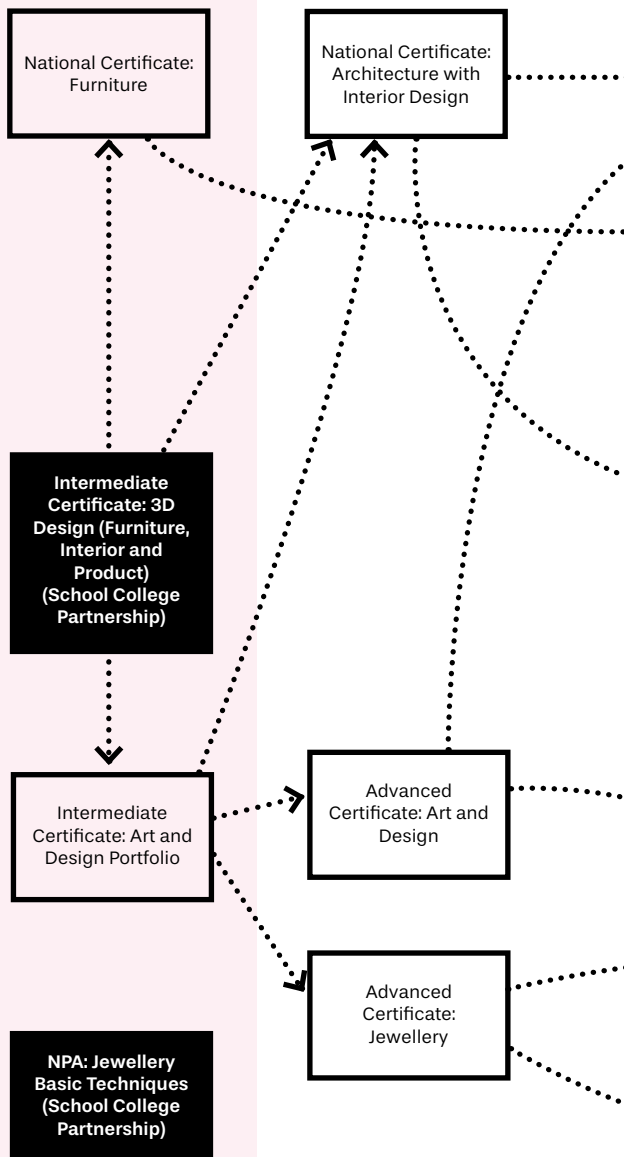
School College Partnership courses



Courses share progression options



This planner shows possible routes of progression. For full entry requirements for each course, always check online.



Equivalent to Year 1 at University and Advanced Highers

SCQF LEVEL

7

Equivalent to Year 2 at University

SCQF LEVEL

8

Equivalent to Year 3 at University

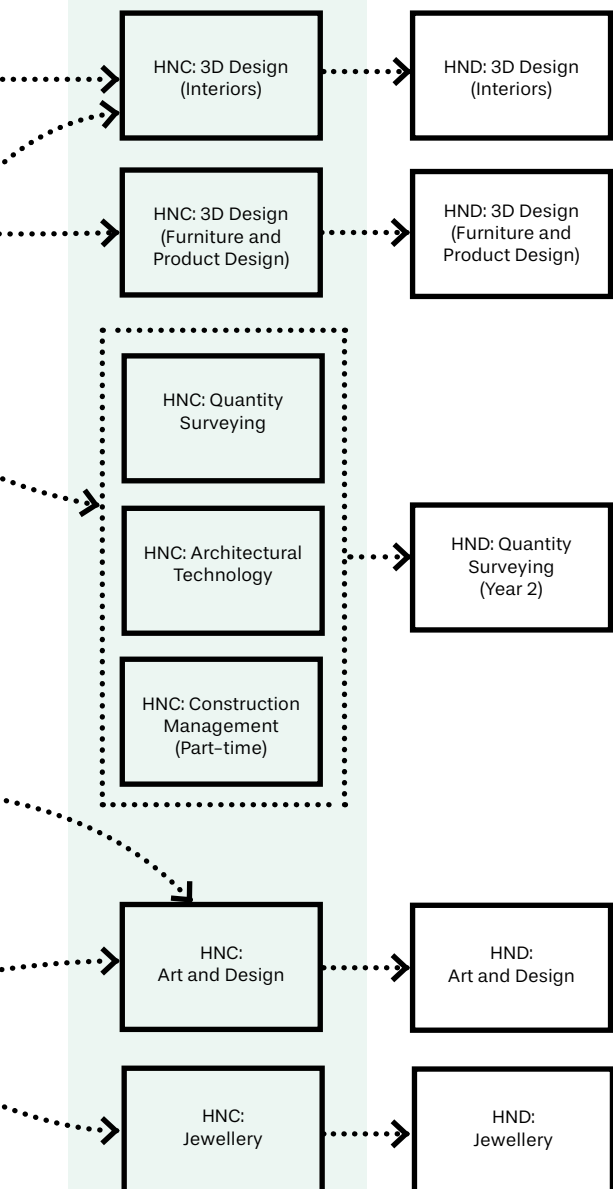
SCQF LEVEL

9

Equivalent to Year 4 (Honours) at University

SCQF LEVEL

10



Articulation to university

Fife College offers over 600 routes to a degree in partnership with a wide range of universities across Scotland and the UK.

These articulation routes, which are pathways between a full-time HNC or HND course to a degree course, are formally agreed between the College and the university to ensure a smooth transition to degree study.

This means that you could gain direct entry to year 2 at university from an HNC, and with an HND you could move straight to year 3.

Visit the degree pathways pages section of our website for further information.

BUSINESS, MANAGEMENT, AND ACCOUNTING

Unlock a world of possibilities by delving into the world of business, management, and accounting. These dynamic fields not only open doors to a diverse range of sectors but also equip you with the essential skills for success in the modern workplace. Our full-time and part-time courses are designed to prepare you for the demands of today's job market, whether you're aiming for office management, people and organisational management, economics, marketing, or a host of other subjects and competencies.

With our business, management and accounting courses, you'll find an array of opportunities across diverse sectors, including banking, administration, human resource management, retail management, and even law or policing.

What route can I take to my ideal career?

You can start at SCQF Level 4, Level 5, Level 6 or HNC, if you meet the entry criteria. You can then progress through HND and on to year 3 of a degree at Fife College or one of our partner universities, or move into employment.

What kind of career could I have?

- Accountant
- Banking
- Clerical Assistant
- Courts Officer
- Financial Analyst
- Human Resource Manager
- Management Accountant
- Marketing Manager
- Mortgage Advisor
- Office Administrator
- Office Manager
- Payroll Manager
- Paralegal
- Personal Assistant
- Police Officer
- Solicitor
- Team Leader
- And more...

For Business, Enterprise and Accounting courses:

Visit fife.ac.uk/business for more course details.



For Office Services, Legal and Policing courses:

Visit fife.ac.uk/office for more course details.



SCQF LEVEL	Business, Management, and Accounting	Full-time	Part-time
4	Certificate: Introduction to Business, Administration and Employability		D
5	Intermediate Certificate: Business Enterprise		D
5	Intermediate Certificate: Business, Administration and Accounting with Law	D K	
6	Advanced Certificate: Accounting	D K	
6	Advanced Certificate: Business Administration	D K	
7	HNC: Accounting	D K	
7	HNC: Administration and Information Technology	K	D
7	HNC: Business (with Management)	D K	
7	HNC: Legal Services	K	
7	HNC: Facilities Management	K	
7	HNC: Marketing Communications	D	
7	HNC: Police Studies	D K	
7	Professional Development Award: Book-keeping		D
7	Professional Development Award: Information Technology in Business		D
8	HND: Accounting	D K	
8	HND: Administration and Information Technology	K	
8	HND: Business (with Management)	D K	
9	BA: Accounting with Finance		D
9	BA: Business Management		D

KEY **D** Dunfermline **K** Kirkcaldy **G** Glenrothes **L** Levenmouth **R** Rosyth

Course listings and campus locations are correct at time of printing, but may be subject to change. Please visit our website for the most up-to-date course information.

Please note: due to the opening of our new campus in Dunfermline, it is possible that students studying at the current Dunfermline campus may relocate to the new campus part way through the academic year 2025/26. This information will be communicated to all course applicants and available on our website once confirmed.

School College Partnership courses offered within Business, Management, and Accounting include:

- National Progression Award: Accountancy SCQF Level 6
- National Progression Award: Financial Services
- National Progression Award: Legal Studies SCQF Level 6
- Personal Finance Award SCQF Level 6

Please note: School College Partnership courses vary by High School. Please check with your own High School to see which courses are available.

Fife.ac.uk

Your part-time study options within Business, Management, and Accounting:

- AAT Certificate in Accounting
- SVQ: Business and Administration SCQF Level 5
- SVQ: Business and Administration SCQF Level 6
- AAT Advanced Diploma in Accounting
- SVQ: Management SCQF Level 7
- SVQ: Learning and Development SCQF Level 8
- AAT Professional Diploma in Accounting
- BA: Accounting with Finance SCQF Level 9
- BA: Business Management SCQF Level 9
- SVQ: Learning and Development SCQF Level 9
- SVQ: Management SCQF Level 9

STUDENT STORY

Liam Brown

- HNC: Administration and Information Technology
- BA (Hons): Business

I started my educational journey here at Fife College doing Administration and IT. I did my HND, then moved on to my degree in Business Management. I really enjoyed the marketing parts of the course, which led me on to the University of Dundee afterwards where I studied a Master's degree in marketing.

I met some amazing lecturers while I was at Fife College. Some of them actually influenced me to go onto my Master's degree. They saw potential in me that I didn't yet see in myself. So, it meant a lot that the lecturers had that faith in me.



"You become a better person, you're meeting a lot of great people and networking, and I wouldn't be where I am now without that experience."



Business, Management, and Accounting Course Planner

Equivalent to National 4s

SCQF LEVEL

4

Equivalent to National 5s

SCQF LEVEL

5

Equivalent to Highers

SCQF LEVEL

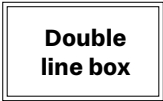
6

Key:

Progression route



Academies/ Community Classes



College courses



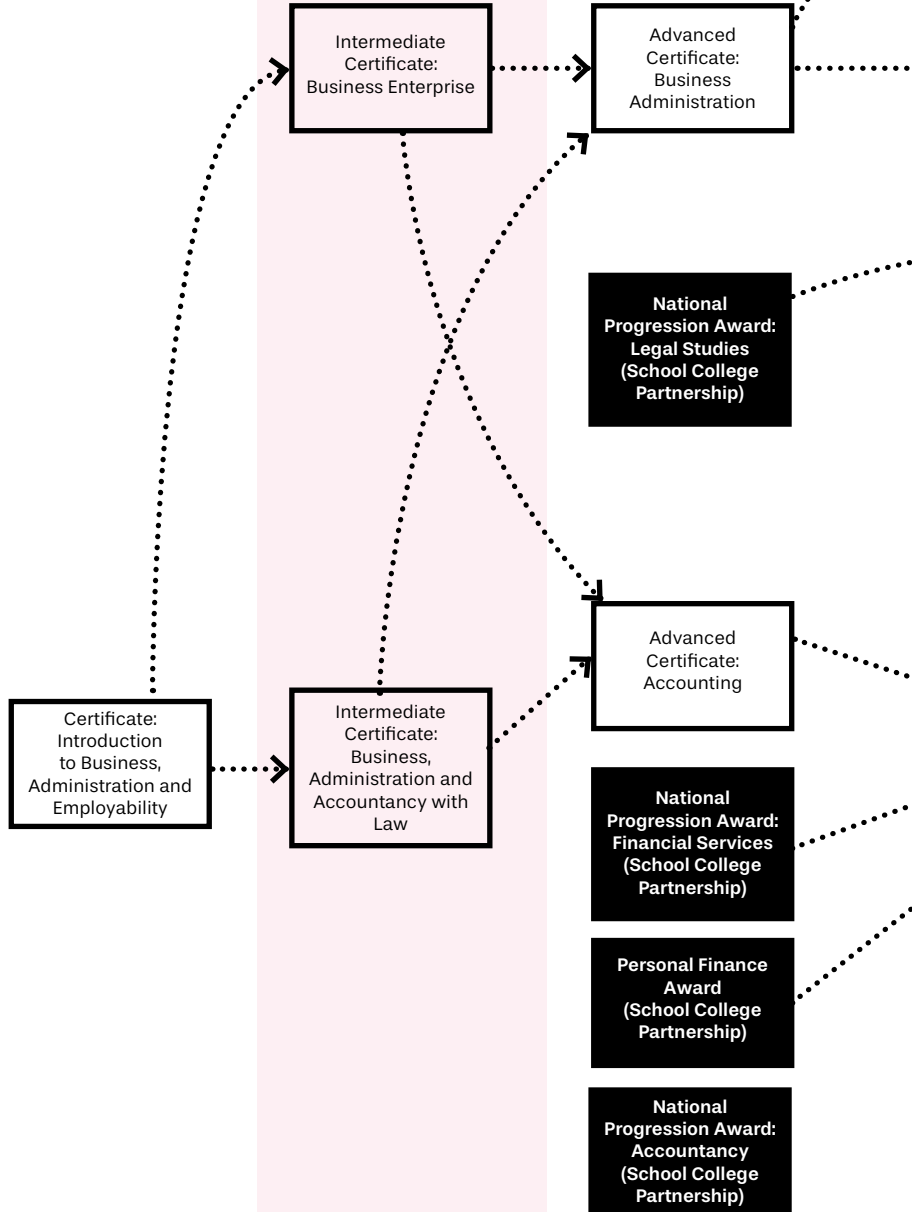
School College Partnership courses



Courses share progression options



This planner shows possible routes of progression. For full entry requirements for each course, always check online.



Equivalent to Year 1 at University and Advanced Highers

SCQF LEVEL

7

HNC: Marketing Communications

HNC: Police Studies

HNC: Legal Services

HNC: Administration and Information Technology

HNC: Business (with Management)

HNC: Accounting

Equivalent to Year 2 at University

SCQF LEVEL

8

HND: Business (with Management)

HND: Accounting

Equivalent to Year 3 at University

SCQF LEVEL

9

BA: Business Management

BA: Accounting with Finance

Equivalent to Year 4 (Honours) at University

SCQF LEVEL

10

BA (Hons): Business Management

BA (Hons): Accounting with Finance

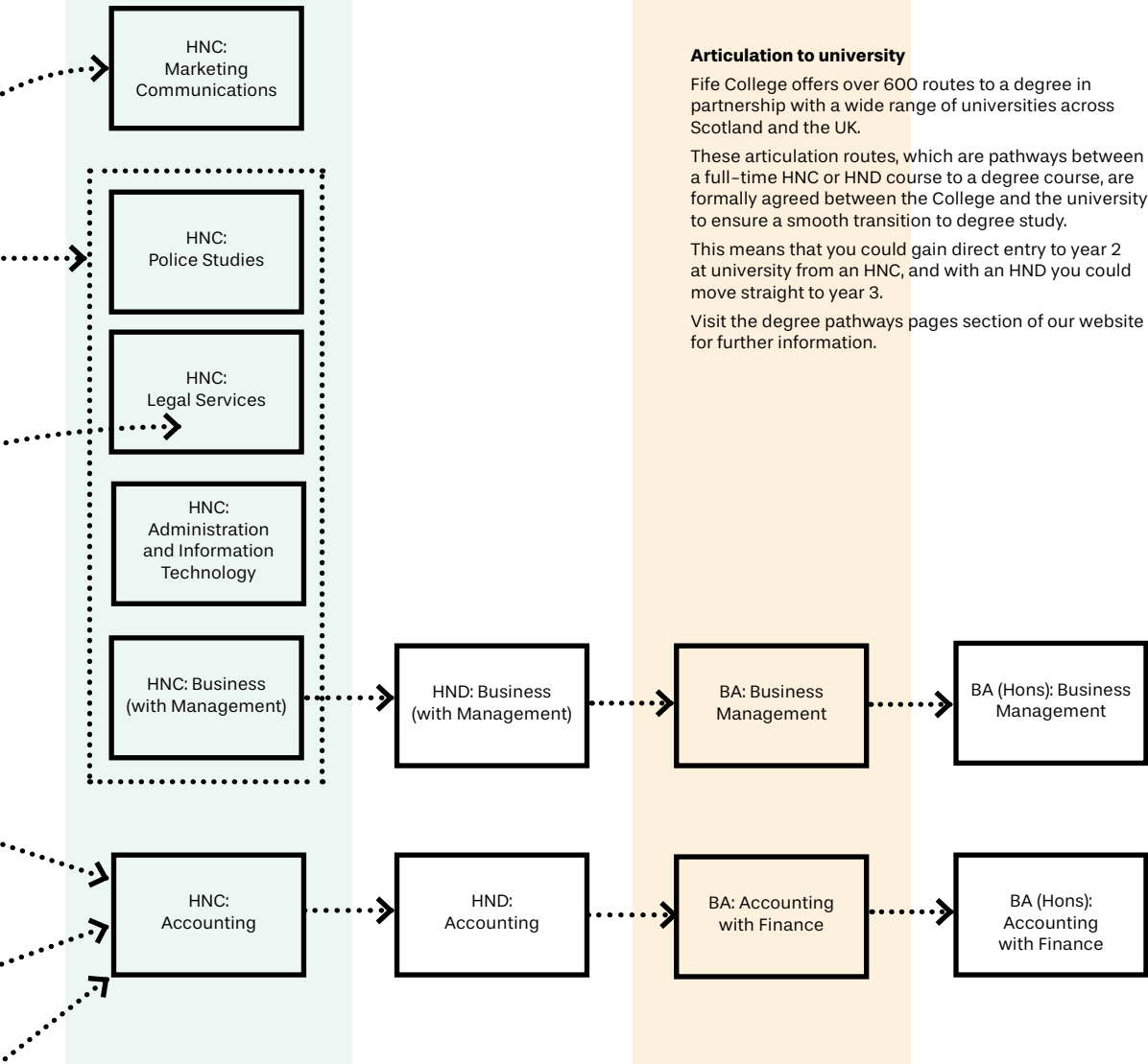
Articulation to university

Fife College offers over 600 routes to a degree in partnership with a wide range of universities across Scotland and the UK.

These articulation routes, which are pathways between a full-time HNC or HND course to a degree course, are formally agreed between the College and the university to ensure a smooth transition to degree study.

This means that you could gain direct entry to year 2 at university from an HNC, and with an HND you could move straight to year 3.

Visit the degree pathways pages section of our website for further information.



CHILDHOOD STUDIES

With huge demand in Scotland for qualified early learning and childcare workers, there has never been a better time to turn your dream of working with children into a reality. Whether you want to work as an Early Years Practitioner, Early Years Support Worker, or Pupil Support Assistant, you will get to use the knowledge and skills learned on your college course to change the world, one little person at a time!

Our wide range of childhood studies courses, from introductory certificates in early learning and childcare, through to HNC, HND and degrees, will provide you with the transferable skills and practical work experience you need to advance in a career in early learning and childcare. Childhood Studies courses also support progression on to further study, leading to careers in primary teaching or social work.

And for those already working within the early learning and childcare sector, our flexible work-based and part-time study options mean you can fit studying around work and family commitments.

What kind of career could I have?

- Early Years Manager
- Lead Early Years Practitioner
- Early Years Officer (EYO)
- Early Years Practitioner
- Childcare Assistant
- Educational (Pupil) Support Assistant
- Early Years Support Worker
- Play Worker
- And more...

Want to know more about these roles?

Check out the Scottish Social Services Council (SSSC) website for more information on the registerable qualifications for each of the roles above. <https://learn.sssc.uk.com/careers/>

What route could I take to my ideal career?

You can start at SCQF Level 4 (the equivalent of National 4s) and progress through HNC/HND, and on to years 3 and 4 of a degree at Fife College or move into employment.

Visit fife.ac.uk/childcare for more course details.



SCQF LEVEL	Childhood Studies	Full-time	Part-time	Virtual Campus Full-time
4	Certificate: First Steps to a Career in Childcare inc. Skills to Work: Early Education and Childcare	G		
4	Gateway to Childhood Studies		D L	
5	Intermediate Certificate: Childhood Studies	D K G		
5	Intermediate Certificate: Preparation for Early Learning and Childcare (incorporating National 5)		D G	
5	Pathway to Early Learning		D G L	
6	National Certificate: Childhood Practice	D K G		
7	HNC: Childhood Practice	D K G		R
8	HND: Childhood Practice	D		
9	BA: Childhood Practice		D	
9	BA: Childhood Studies	D		
10	BA (Hons): Childhood Studies	D		

KEY **D** Dunfermline **K** Kirkcaldy **G** Glenrothes **L** Levenmouth **R** Rosyth

School College Partnership courses offered within Childhood Studies include:

- Gateway to Childhood Studies SCQF Level 4
- Introduction to Early Education and Childcare National 4
- Introduction to Early Education and Childcare National 5

Please note: School College Partnership courses vary by High School. Please check with your own High School to see which courses are available.

Your part-time study options within Childhood Studies:

- Professional Development Award: Educational Support Assistance SCQF Level 6

Course listings and campus locations are correct at time of printing, but may be subject to change. Please visit our website for the most up-to-date course information.

Please note: due to the opening of our new campus in Dunfermline, it is possible that students studying at the current Dunfermline campus may relocate to the new campus part way through the academic year 2025/26. This information will be communicated to all course applicants and available on our website once confirmed.

STUDENT STORY

Rosslyn Mullin

- NC: Childhood Practice
- HNC: Childhood Practice
- BA: Childhood Practice

I have studied with Fife College for a number of years. I completed my NC, my HNC, my SVQ Level 4, and then now my degree. I've thoroughly enjoyed the last two years of my degree. It was a big commitment, but I've been fully supported by both the tutors and through the management team at Little Bugs Nursery.

Outdoor learning has always been my passion. When I first qualified with my NC, I worked in Scotland's first all-outdoor nursery and then this opportunity came up three years ago for me to become manager. So obviously working towards a degree and being able to do that at the same time has really helped me to flourish in my role.



“It’s been great to have a degree locally, so we didn’t have to travel far.”



Childhood Studies Course Planner

Equivalent to National 4s

SCQF LEVEL

4

Equivalent to National 5s

SCQF LEVEL

5

Equivalent to Highers

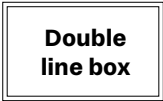
SCQF LEVEL

6

Key:

Progression route
.....→

**Academies/
Community Classes**



College courses



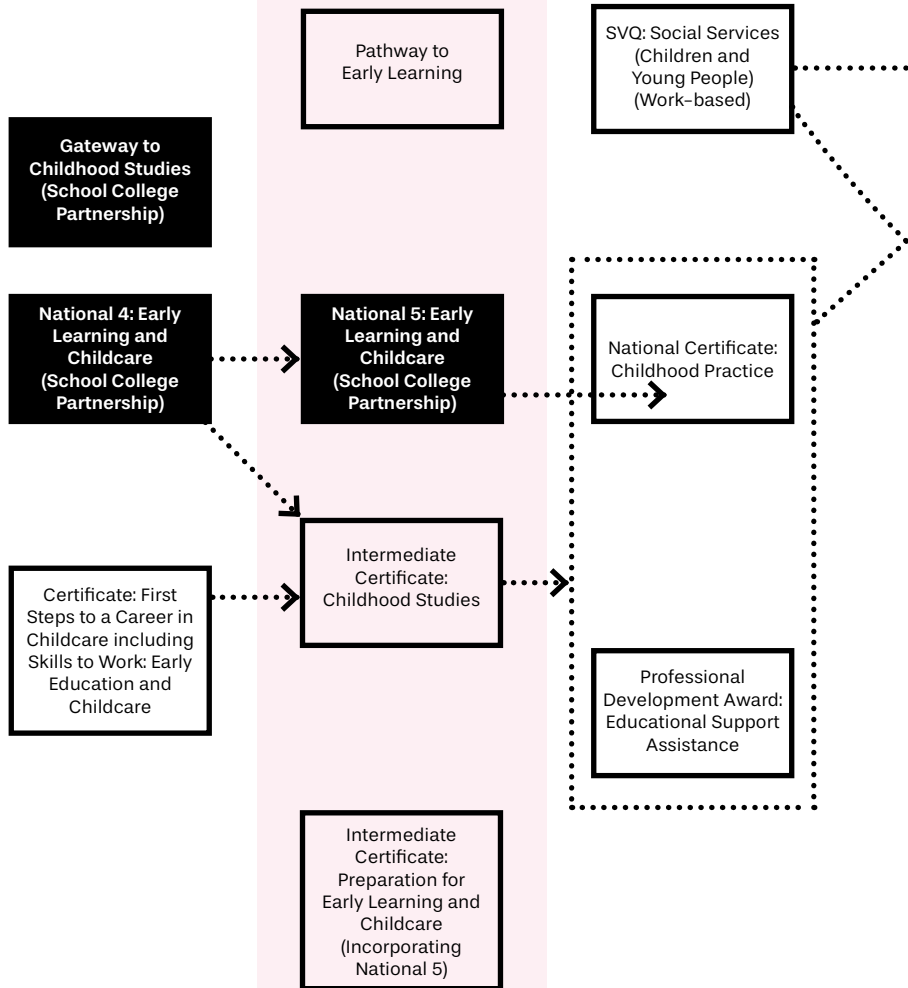
**School College
Partnership courses**



**Courses share
progression options**



This planner shows possible routes of progression. For full entry requirements for each course, always check online.



Equivalent to Year 1 at University and Advanced Highers

SCQF LEVEL

7

Equivalent to Year 2 at University

SCQF LEVEL

8

Equivalent to Year 3 at University

SCQF LEVEL

9

Equivalent to Year 4 (Honours) at University

SCQF LEVEL

10

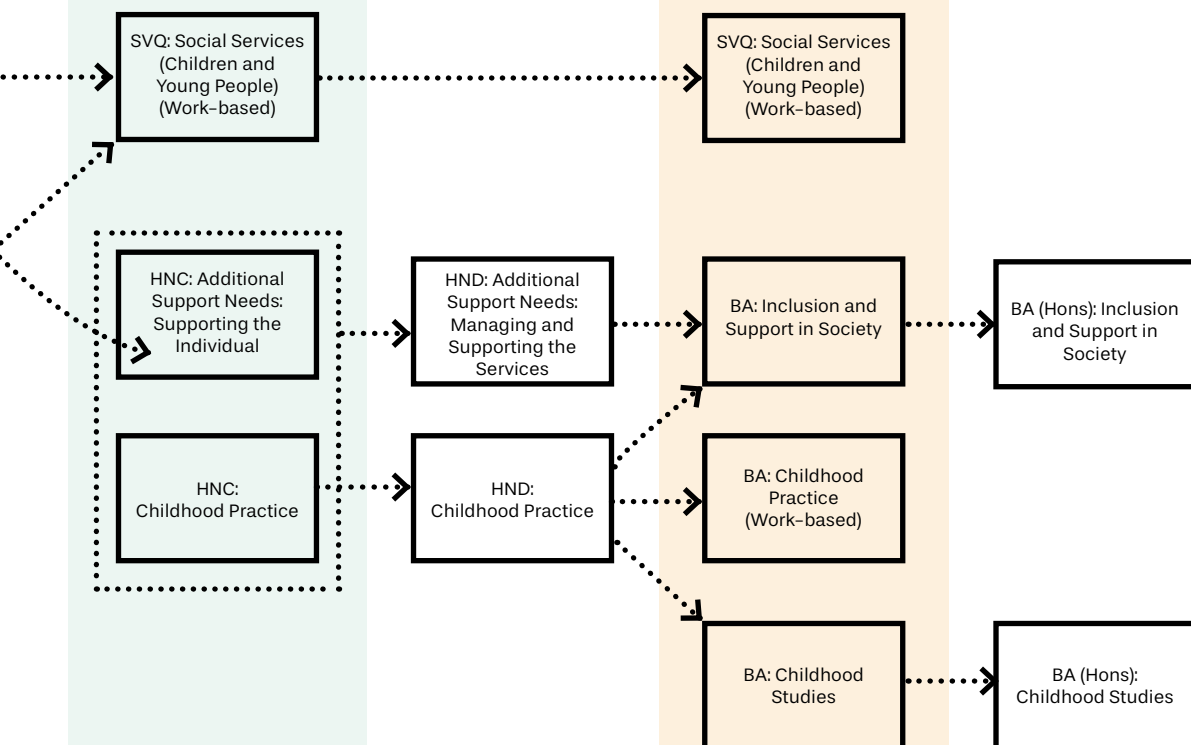
Articulation to university

Fife College offers over 600 routes to a degree in partnership with a wide range of universities across Scotland and the UK.

These articulation routes, which are pathways between a full-time HNC or HND course to a degree course, are formally agreed between the College and the university to ensure a smooth transition to degree study.

This means that you could gain direct entry to year 2 at university from an HNC, and with an HND you could move straight to year 3.

Visit the degree pathways pages section of our website for further information.



COMPUTING AND TECHNOLOGIES

There has never been a better time to consider a career in Digital, Computing and Cyber. In an industry that contributes nearly £5bn to the Scottish economy, it's estimated that 13,000 new roles are created on an annual basis within Scotland's emerging digital sectors. People working in these sectors are 23% more likely to be employed on a full-time, permanent basis, and earn a salary that is on average 26% higher than the Scottish average.

Our courses will equip you with the specialist computer science and digital media skills you need to pursue a career in areas such as Software Development, Cyber Security, 3D Animation, Computer Games Design, and Digital Design.

Strong digital and cyber skills can lead to many exciting job opportunities, not only in IT businesses but across all sectors including Banking and Finance, Creative Industries, Education, Engineering, Tourism, Healthcare and the Public Sector

What kind of career could I have?

- Cyber Security Specialist
- Games Developer
- Software Developer
- 3D Animator
- IT Technician
- Mobile App Developer
- UX Designer
- Web Developer
- And many more...

What route could I take to my ideal career?

You can start at SCQF Level 4 (the equivalent of National 4s) and progress through HNC/HND and on to year 3 of a degree at one of our partner universities or move into employment.

Visit fife.ac.uk/digital for more course details.



SCQF LEVEL	Computing and Technologies	Full-time	Part-time	Virtual Campus Part-time
4	Certificate: Computing with Computer Games Design and Cyber Security	D K		
5	Intermediate Certificate: Computer Games Design and Animation	D G		
5	Intermediate Certificate: Introduction to Computer Games Design and Animation (February start)	D		
5	Intermediate Certificate: Computing with Software Development and Cyber Security	D K		
6	Advanced Certificate: Computer Games Design and Animation	D G		
6	Advanced Certificate: Computing with Software Development and Cyber Security	D K		
7	HNC: 3D Computer Animation	G		
7	HNC: Computer Games Development	G		
7	HNC: Computing	K		
7	HNC: Computing (Software Development)	K		●
7	HNC: Cybersecurity	K		
7	HNC: Digital Design and Development (Games)	G		
8	HND: 3D Computer Animation	G		
8	HND: Computer Games Development	G		
8	HND: Computing (Software Development)	K		
8	HND: Cybersecurity	K		
8	HND: Digital Design and Development (Games)	G		

KEY **D** Dunfermline **K** Kirkcaldy **G** Glenrothes **L** Levenmouth **R** Rosyth

School College Partnership courses offered within Computing and Technologies include:

- National Progression Award: Computing Technologies SCQF Level 4
- National Progression Award: Digital Media SCQF Level 5
- National Progression Award: Esports SCQF Level 5
- Introduction to Cybersecurity SCQF Level 6
- Introduction to Internet of Things SCQF Level 6

Please note: School College Partnership courses vary by High School. Please check with your own High School to see which courses are available.

Your part-time study options within Computing and Technologies:

- National Progression Award: Data Science SCQF Level 5
- Professional Development Award: Data Science SCQF Level 7
- Professional Development Award: Computer Support SCQF 7
- Professional Development Award: Software Development SCQF 7

Course listings and campus locations are correct at time of printing, but may be subject to change. Please visit our website for the most up-to-date course information.

Please note: due to the opening of our new campus in Dunfermline, it is possible that students studying at the current Dunfermline campus may relocate to the new campus part way through the academic year 2025/26. This information will be communicated to all course applicants and available on our website once confirmed.

STUDENT STORY



Tanya Kerr

- Certificate: Computing with Computer Games Design and Cyber Security
- HNC: Cyber Security
- HND: Cyber Security

"You get support from the students in your class as well as the lecturers."

I'm doing an HND in Cyber Security and it is quite challenging, but that is what I like most about the course. I would like to go all the way to progress on to doing my Master's in Ethical Hacking at Abertay University.

I would definitely recommend Fife College because I was a very introverted person. This changed as soon as I started at college, because I had to have teamwork. You have to engage with the course and the lecturers, so I'm more outspoken now and I'm more comfortable with classwork and presentations.




STUDENT STORY

Derek Martin-Stead

- Certificate: Computing with Computer Games Design and Cyber Security
- Intermediate Certificate: Computing with Software Development and Cyber Security
- Advanced Certificate: Computing with Software Development and Cyber Security
- HNC: Computing (Software Development)
- HND: Computing (Software Development)

I started at Fife College in 2021 after my health stopped me working, and I decided to move into a different career that would allow me to do it with the conditions that I have.

I started studying at Level 4, and I've worked my way up – this is my fifth academic year at Fife College. After this year, I'll be going to Napier University to do my Honours Degree.

A portrait of Derek Martin-Stead, a man with glasses and a light-colored polo shirt, smiling. The portrait is set against a dark background and is partially framed by a large white graphic element that resembles a stylized speech bubble or a large bracket. The background of the entire page is a solid orange color with some white abstract shapes in the corners.

"The experience I've had here has just been absolutely amazing. The support you get from the lecturers is outstanding."

Computing and Technologies Course Planner

Equivalent to National 4s

SCQF LEVEL

4

Equivalent to National 5s

SCQF LEVEL

5

Equivalent to Highers

SCQF LEVEL

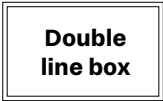
6

Key:

Progression route



Academies/ Community Classes



College courses



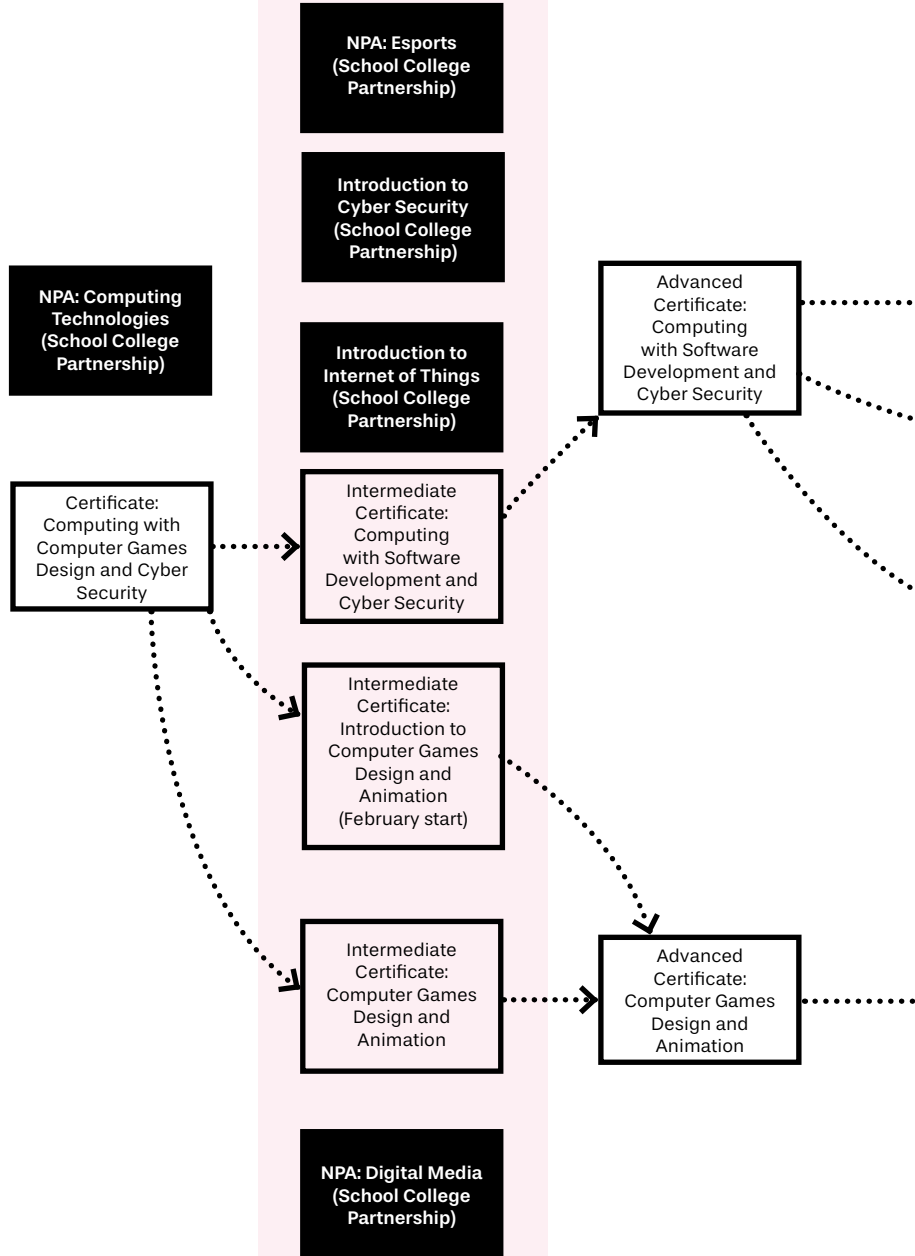
School College Partnership courses



Courses share progression options



This planner shows possible routes of progression. For full entry requirements for each course, always check online.



Equivalent to Year 1 at University and Advanced Highers

SCQF LEVEL

7

HNC:
Computing

HNC:
Cyber Security

Professional
Development Award:
Computer Support

HNC: Computing:
(Software
Development)

HNC:
3D Computer
Animation

HNC: Digital Design
and Development
(Games)

HNC:
Computer Games
Development

Equivalent to Year 2 at University

SCQF LEVEL

8

HND:
Cyber Security

HND:
Computing
(Software
Development)

HND:
3D Computer
Animation

HND: Digital Design
and Development
(Games)

HND:
Computer Games
Development

Equivalent to Year 3 at University

SCQF LEVEL

9

Equivalent to Year 4 (Honours) at University

SCQF LEVEL

10

Articulation to university

Fife College offers over 600 routes to a degree in partnership with a wide range of universities across Scotland and the UK.

These articulation routes, which are pathways between a full-time HNC or HND course to a degree course, are formally agreed between the College and the university to ensure a smooth transition to degree study.

This means that you could gain direct entry to year 2 at university from an HNC, and with an HND you could move straight to year 3.

Visit the degree pathways pages section of our website for further information.

CONSTRUCTION AND BUILDING SERVICES

Our specialised construction trades courses provide essential practical skills that are crucial in the construction industry. Explore traditional domains like Construction Craft and Building Services and embark on trade routes at SCQF Level 4 or 5.

Whether you're interested in Painting and Decorating, Brickwork, Carpentry and Joinery, Plumbing and Gas, or Groundworks, we'll help you to build on the skills you need to succeed.

What route can I take to my ideal career?

All of our courses are industry approved, highly valued by employers, and provide the foundation for progression pathways, from SCQF Level 2 through to SCQF Level 6.

What areas can I study?

- Building Services (Electrical, Plumbing and Heating, and Gas)
- Built Environment Technician and Interior Design
- Construction Craft (All Trades)

Visit fife.ac.uk/construction for more course details.



STUDENT STORY

Nichola King

- Start Here for National 4s
- National Progression Award: Painting and Decorating

My name is Nichola King, and I'm doing a National Progression Award in Painting and Decorating at Fife College.

I'm in my 30s, and I'm buzzing that I've managed to gain myself an apprenticeship starting in August, which is difficult in itself, being an older female in the trade – all thanks to my lecturers vouching for me.

"I've wanted to be a painter and decorator since I was about 16, and now I'm finally on my way. It's so close, I can see it now. It's amazing!"



SCQF LEVEL	Construction and Building Services	Full-time	Part-time
4	Certificate: Access to Construction Skills	G	
4	Certificate: Construction Futures	D G	D G
4	Certificate: Construction Futures with Retrofit	L	
5	Construction Skills (CECA) Construction Operations and Civil Engineering Services	D	
5	Diploma in Site Carpentry (City & Guilds)	D	
5	National Progression Award: Plumbing and Electrical Building Services	G	
5	National Progression Awards: Carpentry and Joinery	D G	
5	National Progression Awards: Painting and Decorating	D G	
5	National Progression Awards: Trowel Trades	D G	
6	Level 3 Diploma in Gas Engineering (9074-03)	D	

KEY **D** Dunfermline **K** Kirkcaldy **G** Glenrothes **L** Levenmouth **R** Rosyth

School College Partnership courses offered within Construction and Building Services include:

- Award: Construction Skills SCQF Level 3
- National Progression Award: Pre-Apprenticeship SCQF Level 4
- Construction Taster SCQF Level 5

Please note: School College Partnership courses vary by High School. Please check with your own High School to see which courses are available.

Your part-time study options within Construction and Building Services:

- Diploma in Site Carpentry (City & Guilds) SCQF Level 6



Course listings and campus locations are correct at time of printing, but may be subject to change. Please visit our website for the most up-to-date course information.

Please note: due to the opening of our new campus in Dunfermline, it is possible that students studying at the current Dunfermline campus may relocate to the new campus part way through the academic year 2025/26. This information will be communicated to all course applicants and available on our website once confirmed.

Construction and Building Services Course Planner

Key:

Progression route
.....>

Academies/ Community Classes

Double
line box

College courses

Solid
line box

School College Partnership courses

Filled
in box

Courses share progression options

Dotted
line box

This planner shows possible routes of progression. For full entry requirements for each course, always check online.

SCQF LEVEL
2

SCQF LEVEL
3

Equivalent to National 4s
SCQF LEVEL
4

Award:
Construction Skills
(School College
Partnership)

Certificate:
Construction Futures
with Retrofit

Certificate: Access to
Construction Skills

Certificate:
Construction Futures

National
Progression Award:
Pre-Apprenticeship
(School College
Partnership)

Equivalent to National 5s

SCQF LEVEL

5

Construction Skills
(CECA) Construction
Operations and
Civil Engineering
Services

National Progression
Award: Carpentry
and Joinery

National Progression
Award: Painting and
Decorating

National Progression
Award: Trowel
Trades

National Progression
Award: Plumbing
and Electrical,
Building Services

Diploma: Site
Carpentry C&G

Equivalent to Highers

SCQF LEVEL

6

Foundation
Apprenticeship:
Civil Engineering
(School College
Partnership)

Level 3 Diploma in
Gas Engineering

Equivalent to Year 1 at
University and Advanced Highers

SCQF LEVEL

7

Articulation to university

Fife College offers over 600 routes to a degree in partnership with a wide range of universities across Scotland and the UK.

These articulation routes, which are pathways between a full-time HNC or HND course to a degree course, are formally agreed between the College and the university to ensure a smooth transition to degree study.

This means that you could gain direct entry to year 2 at university from an HNC, and with an HND you could move straight to year 3.

Visit the degree pathways pages section of our website for further information.

Equivalent to Year 2
at University

SCQF LEVEL

8

CULINARY ARTS AND HOSPITALITY

Culinary Arts and Hospitality are among Scotland's most important sectors, leading to new and exciting career opportunities for those who have the drive, skills and the right qualifications to get into this industry.

At Fife College, we're proud to be able to deliver first-class teaching from experienced chefs in the very best learning environments. Our state-of-the-art, purpose-built training kitchens and customer-facing training restaurants are designed to provide a professional environment, giving you a fantastic way to consolidate your learning and develop your skills.

Whether you dream of working in a high-end restaurant, running your own food truck, or becoming the next Gordon Ramsay, Fife College's Culinary Arts and Hospitality courses can help set you on an exciting and rewarding career path.

What kind of career could I have?

- Head Chef
- Chef de Partie
- Food and Beverage Manager
- Pastry Chef
- Food Stylist
- Food Product Developer
- Hospitality Manager
- Bar Manager
- Artisan Baker
- Bakery Operative
- And more...

What route could I take to my ideal career?

You can start at SCQF Level 4 and progress through to HNC at Level 7. Additionally, there are potential progression routes on to second or third year of a relevant degree from HNC.

Visit fife.ac.uk/culinary for more course details.



SCQF LEVEL	Culinary Arts and Hospitality	Full-time	Part-time
4	Certificate: Bakery		K
4	National Progression Award: Professional Cookery		D L
4	Certificate: Professional Cookery	D K	
5	Intermediate Certificate: Bakery	D K	
5	Intermediate Certificate: Cookery and Bakery	L	
5	Intermediate Certificate: Events with Hospitality	K	
5	Intermediate Certificate: Practical Cake Craft		K
5	Intermediate Certificate: Professional Cookery	D K	
6	Advanced Certificate: Professional Cookery	D K	
6	Advanced Certificate: Hospitality and Events	K	
6	Advanced Certificate: Patisserie	L	
7	HNC: Hospitality Operations	K	
7	HNC: Professional Cookery (Patisserie)	K	
7	HNC: Professional Cookery	K	

KEY **D** Dunfermline **K** Kirkcaldy **G** Glenrothes **L** Levenmouth **R** Rosyth

School College Partnership courses offered within Culinary Arts and Hospitality include:

- Foundation Apprenticeship: Hospitality SCQF Level 4
- National Progression Award: Hospitality SCQF Level 6

Please note: School College Partnership courses vary by High School. Please check with your own High School to see which courses are available.

Your part-time study options within Culinary Arts and Hospitality:

- SVQ: Food and Drink Operations SCQF Level 5
- SVQ: Food and Drink Manufacturing SCQF Level 5
- SVQ: Spirits Operations SCQF Level 6

Course listings and campus locations are correct at time of printing, but may be subject to change. Please visit our website for the most up-to-date course information.

Please note: due to the opening of our new campus in Dunfermline, it is possible that students studying at the current Dunfermline campus may relocate to the new campus part way through the academic year 2025/26. This information will be communicated to all course applicants and available on our website once confirmed.

STUDENT STORY

Kyle Anderson–McGregor

- Advanced Certificate: Professional Cookery

I'm currently studying at Dunfermline campus, doing an Advanced Certificate in Professional Cookery. I've been working as a chef as well, so it's been a good experience so far. I've learned a lot of things on this course, including how to handle different meats and different cuts and how to cook them. It's been very enjoyable.

I was recommended by my lecturers to be part of the Chef Ambassadors Programme. I've learned loads and it's been a great experience. We went to Murrayfield Stadium recently and served for the chef board there. It was an amazing experience.



“My plan is to hopefully be a sous chef by 24 and a head chef by the time I am 30 years old.”



Culinary Arts and Hospitality Course Planner

Key:

Progression route
>

**Academies/
 Community Classes**

Double line box

College courses

Solid line box

School College Partnership courses

Filled in box

Courses share progression options

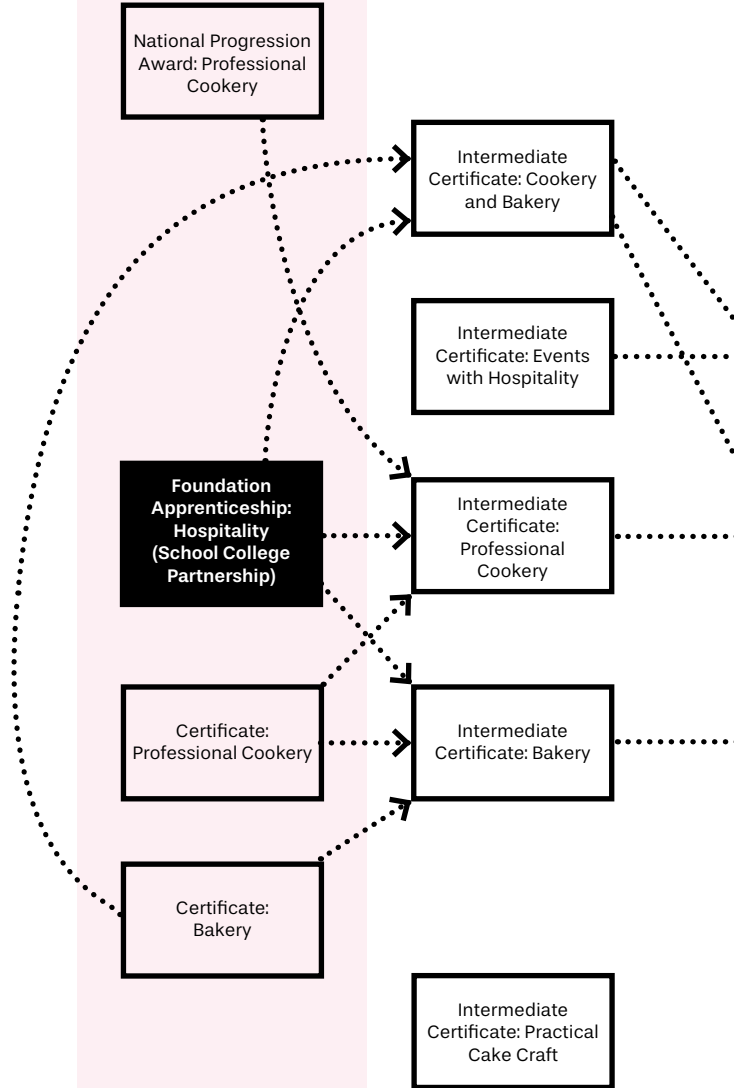
Dotted line box

This planner shows possible routes of progression. For full entry requirements for each course, always check online.

Equivalent to National 4s
SCQF LEVEL 3

Equivalent to National 4s
SCQF LEVEL 4

Equivalent to National 5s
SCQF LEVEL 5



Equivalent to Highers

SCQF LEVEL

6

Equivalent to Year 1 at
University and Advanced Highers

SCQF LEVEL

7

Equivalent to Year 2
at University

SCQF LEVEL

8

Equivalent to Year 3
at University

SCQF LEVEL

9

**National
Progression Award:
Hospitality
(School College
Partnership)**

Advanced
Certificate:
Hospitality and
Events

HNC: Hospitality
Operations

Advanced
Certificate:
Professional Cookery

HNC: Professional
Cookery

Advanced
Certificate:
Patisserie

HNC: Professional
Cookery (Patisserie)

Articulation to university

Fife College offers over 600 routes to a degree in partnership with a wide range of universities across Scotland and the UK.

These articulation routes, which are pathways between a full-time HNC or HND course to a degree course, are formally agreed between the College and the university to ensure a smooth transition to degree study.

This means that you could gain direct entry to year 2 at university from an HNC, and with an HND you could move straight to year 3.

Visit the degree pathways pages section of our website for further information.

ENGINEERING AND ENERGY

A career in Engineering can open doors to a world of limitless possibilities. This field offers not only promising job prospects but also the chance to shape the future in a whole range of diverse industries. Engineers are highly sought after in emerging industries such as renewable energy, pharmaceuticals, digital infrastructure, and fast-moving consumer goods (FMCG) production, as well as more traditional fields such as mechanical engineering, and fabrication and welding.

At Fife College, we offer a comprehensive range of courses designed to fit with your interests and career ambitions. Whether your passion lies in renewable energy, electrical engineering, mechanical engineering, robotics, or advanced wiring techniques, we have courses tailored just for you.

Our Engineering courses are suitable for learners at every level, from pre-apprenticeship training and certificates in engineering, up to HNC, which could allow you to progress on to an engineering degree at university.

What kind of career could I have?

- Computer Aided Design (CAD)
- Advanced Manufacturing
- Robotics and Automation
- Green Energy
- Energy Transition
- Decommissioning
- Environmental Protection
- Energy and Renewables
- Inspection and Non-destructive Testing
- Electrician
- Welder
- Auto Engineer
- And more...

What route could I take to my ideal career?

You can start at SCQF Level 4 (the equivalent to National 4s) and progress up to HNC, then on to year 2 of a degree at university, or move into employment.

What areas can I study?

- Advanced Manufacturing, Robotics and Automation
- Automotive Engineering
- Computer Aided Draughting and Design
- Electrical Engineering
- Engineering Systems and Renewables
- Fabrication, Welding and Inspection
- Manufacturing Engineering
- Mechanical Engineering
- And more...

Visit fife.ac.uk/engineering for more course details.



Engineering and Energy

		Full-time	Part-time
SCQF LEVEL	Automotive		
4	Certificate: Gateway to Engineering (Including Automotive)	G	
5	IMI Award: Transport Maintenance IMI Level 1	G	
6	Diploma in Light Vehicle Maintenance and Repair Principles VRQ 3	G	
6	IMI Certificate: Transport Maintenance IMI Level 2	G	
SCQF LEVEL	Electrical Engineering		
4	Certificate: Gateway to Engineering (Including Electrical)	G	
5	National Certificate: Electrical Engineering	R	
5	National Certificate: Electrical Installation (Pre-Apprenticeship)	G	
5	National Certificates: Electrical Engineering and Electronic Engineering	G	
6	National Certificate: Electrical and Electronic Engineering	G	G
6	National Certificate: Electrical Engineering	R	R
7	HNC: Electrical Engineering	G R	G R
SCQF LEVEL	Engineering and Engineering Systems		
5	Intermediate Certificate: Engineering (Pre-Apprenticeship)	R	
5	National Certificate: Engineering Systems	G R	
6	National Certificate: Engineering Systems	R	
7	HNC: Engineering		D G R
SCQF LEVEL	Fabrication and Welding		
5	Intermediate Certificate: Engineering (Fabrication and Welding)	R	
5	National Certificate: Fabrication and Welding Engineering	G R	
7	HNC: Fabrication and Welding		D
7	HNC: Fabrication, Welding and Inspection	G R	G R
SCQF LEVEL	Manufacturing Engineering		
6	National Certificate: Manufacturing Engineering	G	G
7	HNC: Computer Aided Draughting and Design	G	G
7	HNC: Manufacturing Engineering	G	G
SCQF LEVEL	Mechanical Engineering		
5	National Certificate: Engineering Practice	G R	
6	National Certificate: Mechanical Engineering (including SWAP Access to Engineering)	G	
6	National Certificate: Mechanical Engineering	R	R
7	HNC: Mechanical Engineering		R

KEY D Dunfermline K Kirkcaldy G Glenrothes L Levenmouth R Rosyth

School College Partnership courses offered within Engineering and Energy include:

- Skills for Work: Engineering Skills SCQF Level 4
- Work-Based Skills: Automotive Skills SCQF Level 4
- Skills for Work: Engineering SCQF Level 5
- Skills for Work: Engineering Skills National 5 SCQF level 5
- NQ in Girls into Energy – SHELL – Skills for Work SCQF Level 5
- Foundation Apprenticeship: Engineering SCQF Level 6

Please note: School College Partnership courses vary by High School. Please check with your own High School to see which courses are available.

Your part-time study options within Engineering and Energy:

- Level 3 Award in the Requirements for Electrical Installations SCQF Level 5
- Design and Installation of Domestic and Small Commercial Electric Vehicle Charging Installations SCQF Level 6
- FICA Preparation Course SCQF Level 6
- Level 3 Award in Initial and Periodic Inspection and Testing of Electrical Installations (2391–52) SCQF Level 6
- Level 3 Award in the In-Service Inspection and Testing of Electrical Equipment SCQF Level 6
- Level 3 Award in the Requirements for Electrical Installations SCQF Level 6
- SVQ: Level 3 in Engineering Technical Support Bias Quality SCQF Level 6
- SVQ: Level 3 in Engineering Maintenance SCQF Level 6
- SVQ: Engineering Technical Support Bias Quality SCQF Level 6
- Welding Skills SCQF Level 6
- Professional Development Award: Advanced Manufacture Technologies SCQF Level 7
- Professional Development Award: Industrial Automation SCQF Level 7
- Professional Development Award: Renewable Energy Systems SCQF Level 7

Course listings and campus locations are correct at time of printing, but may be subject to change. Please visit our website for the most up-to-date course information.

Please note: due to the opening of our new campus in Dunfermline, it is possible that students studying at the current Dunfermline campus may relocate to the new campus part way through the academic year 2025/26. This information will be communicated to all course applicants and available on our website once confirmed.

Arnold Clark scholarships help Fife College students on the road to success

In November 2024, Arnold Clark awarded a group of Fife College students special scholarships to support their studies.

The scholarships, presented through the Adam Smith Scholarships programme, are designed to support students by helping them purchase essential resources and materials to enhance their studies.

David Clack, who is studying IMI Certificate: Transport Maintenance IMI Level 2, was awarded a £500 scholarship in recognition of the commitment he has shown during his automotive studies.

"I am incredibly shocked about winning the scholarship. I am



hoping that this can open more doors for me to get a job in a garage and learn from others in the trade. Hopefully, one day, I can open my own garage and employ people with disabilities who have a common interest in the motor trade, as it would be nice

to help others." Lorna Downie, Dua Nasar, Declan Bisset, and Rayyan Asif were also each awarded a £500 scholarship in recognition of their dedication to advancing their careers in business and engineering.

Automotive, Fabrication and Welding, and Manufacturing Course Planner

Equivalent to National 4s

SCQF LEVEL

4

Equivalent to National 5s

SCQF LEVEL

5

Equivalent to Highers

SCQF LEVEL

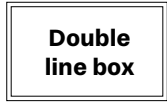
6

Key:

Progression route



Academies/
Community Classes



College courses



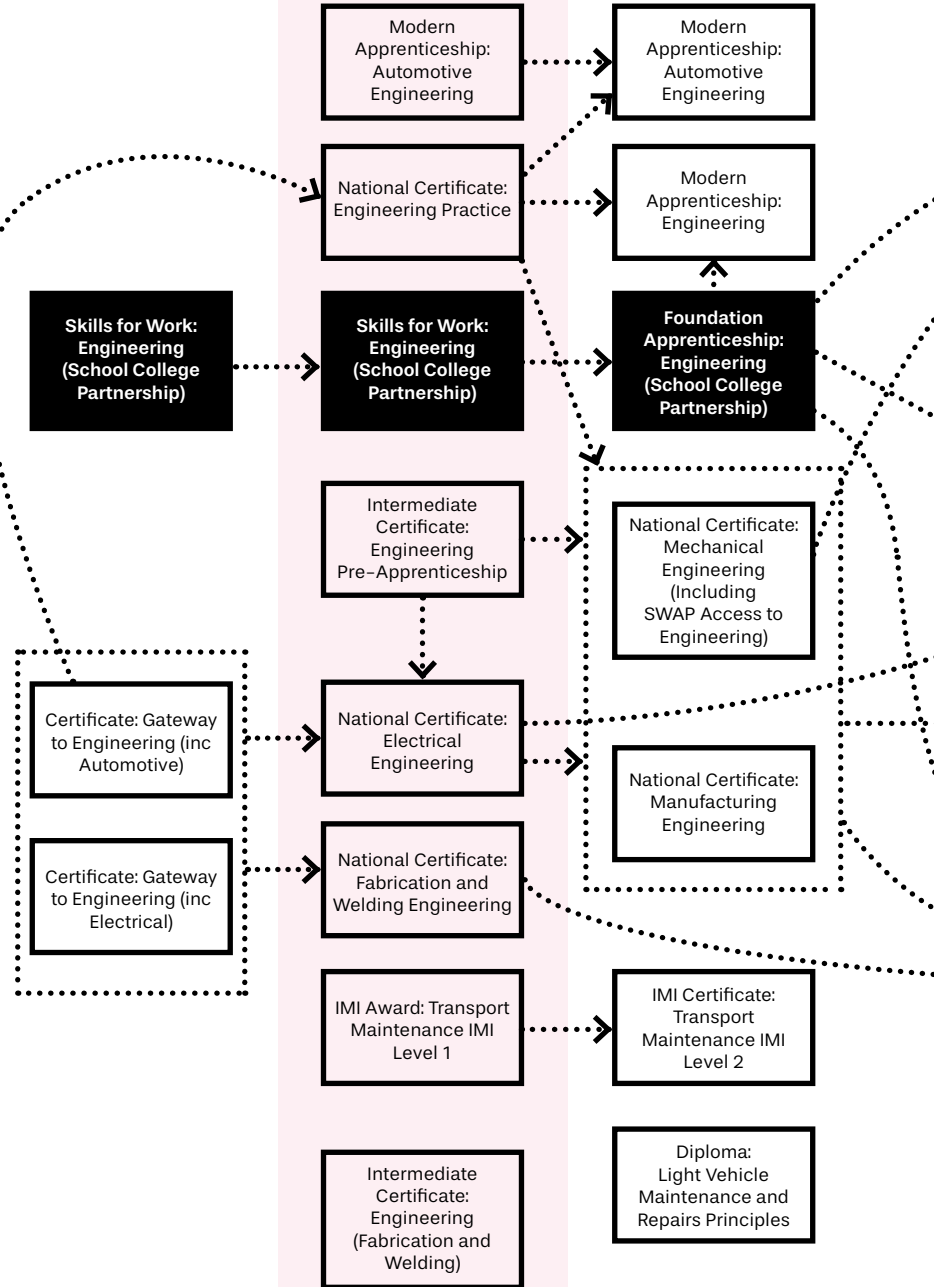
School College
Partnership courses



Courses share
progression options



This planner shows possible routes of progression. For full entry requirements for each course, always check online.



Equivalent to Year 1 at University and Advanced Highers

SCQF LEVEL

7

Equivalent to Year 2 at University

SCQF LEVEL

8

Equivalent to Year 3 at University

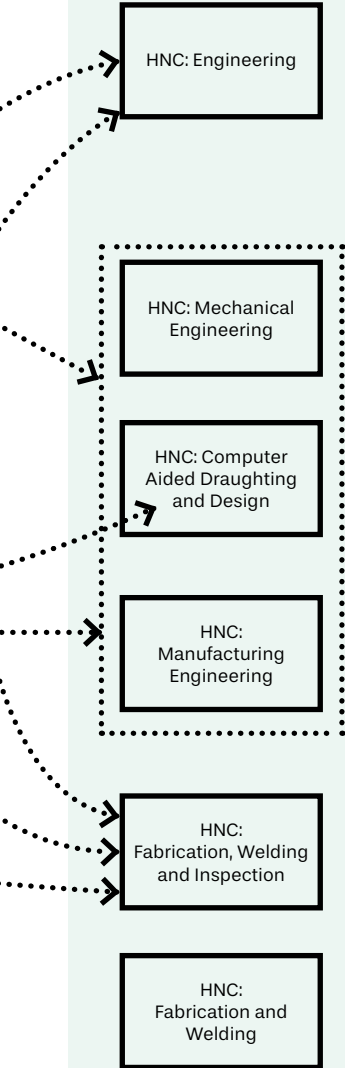
SCQF LEVEL

9

Equivalent to Year 4 (Honours) at University

SCQF LEVEL

10



Articulation to university

Fife College offers over 600 routes to a degree in partnership with a wide range of universities across Scotland and the UK.

These articulation routes, which are pathways between a full-time HNC or HND course to a degree course, are formally agreed between the College and the university to ensure a smooth transition to degree study.

This means that you could gain direct entry to year 2 at university from an HNC, and with an HND you could move straight to year 3.

Visit the degree pathways pages section of our website for further information.

Electrical, Mechanical and Engineering Systems Course Planner

Key:

Progression route
→

**Academies/
 Community Classes**

**Double
 line box**

College courses

**Solid
 line box**

**School College
 Partnership courses**

**Filled
 in box**

**Courses share
 progression options**

**Dotted
 line box**

This planner shows possible routes of progression. For full entry requirements for each course, always check online.

Equivalent to National 4s

SCQF LEVEL

4

Equivalent to National 5s

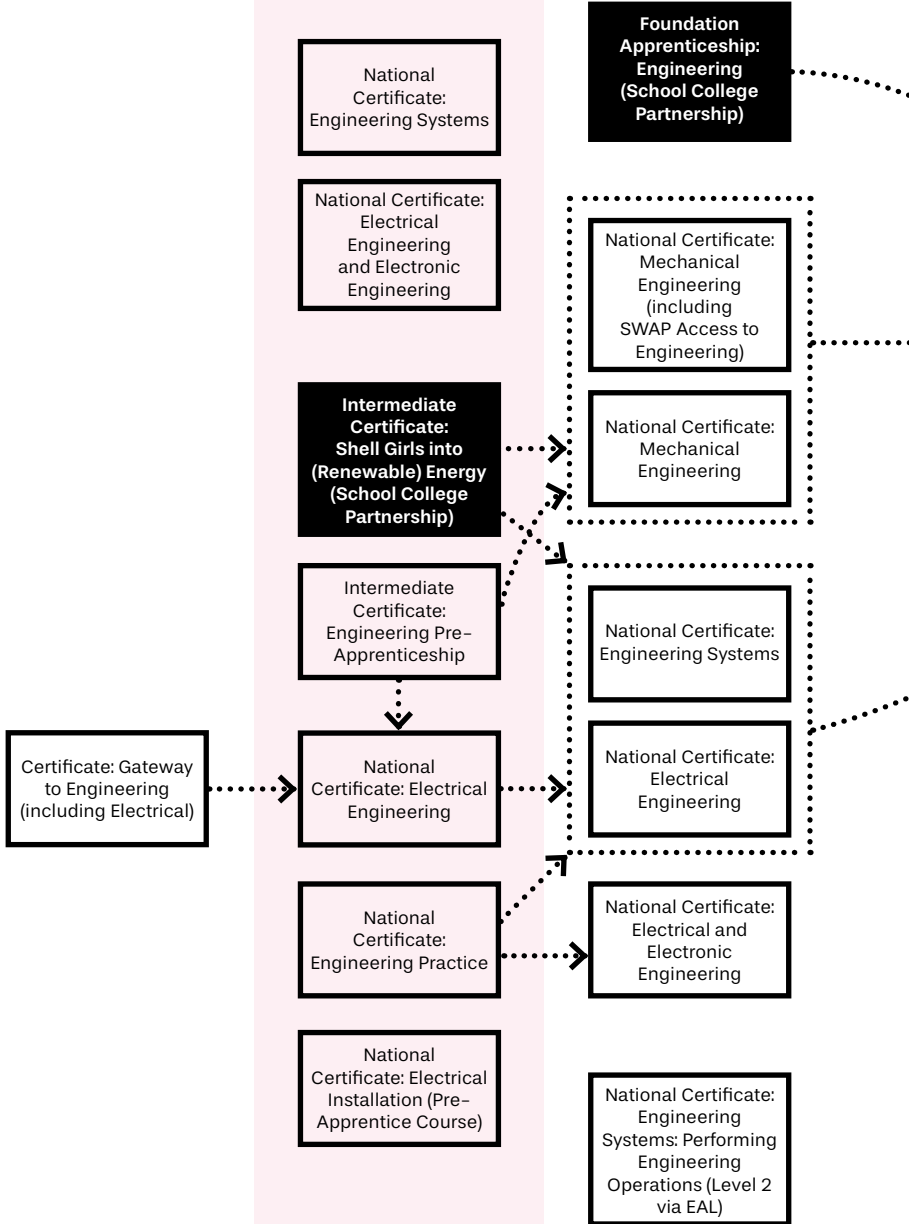
SCQF LEVEL

5

Equivalent to Highers

SCQF LEVEL

6



Equivalent to Year 1 at University and Advanced Highers

SCQF LEVEL

7

Equivalent to Year 2 at University

SCQF LEVEL

8

Equivalent to Year 3 at University

SCQF LEVEL

9

Equivalent to Year 4 (Honours) at University

SCQF LEVEL

10

Articulation to university

Fife College offers over 600 routes to a degree in partnership with a wide range of universities across Scotland and the UK.

These articulation routes, which are pathways between a full-time HNC or HND course to a degree course, are formally agreed between the College and the university to ensure a smooth transition to degree study.

This means that you could gain direct entry to year 2 at university from an HNC, and with an HND you could move straight to year 3.

Visit the degree pathways pages section of our website for further information.

HNC: Mechanical Engineering



HNC: Electrical Engineering



ENGLISH FOR SPEAKERS OF OTHER LANGUAGES (ESOL)



Learning a new language can have many benefits.

Being more fluent in English means you will be more comfortable in conversation, be able to communicate in more effective ways, and boost your job prospects.

We offer English for Speakers of Other Languages – known as ESOL – courses to help you develop your speaking, listening, reading, and writing skills in English.

So, whether you are looking to develop your English language skills for work or pleasure, our ESOL courses, from introductory level to advanced level, are perfect for you.

Studying with us will help you prepare for whatever your next step is – you'll be ready for employment opportunities, the Cambridge PET, and the Citizenship test.

Every year our ESOL Level 4 and 5 students organise the Diversity Festival, a vibrant celebration of cultures and communities. It features music, dance and food from various ethnic groups, promoting inclusion, understanding and unity. The festival showcases the Fife College's multicultural spirit, encouraging appreciation of diverse traditions and fostering connections among people.

Visit fife.ac.uk/ESOL for more course details.



SCQF LEVEL	English for Speakers of Other Languages (ESOL)	Full-time	Part-time
2	English for Speakers of Other Languages: ESOL Beginners	K	
3	English for Speakers of Other Languages: ESOL Elementary	K	
4	English for Speakers of Other Languages		K
4	National 4: English for Speakers of Other Languages ESOL	K	
5	National 5: English for Speakers of Other Languages ESOL	K	

KEY **D** Dunfermline **K** Kirkcaldy **G** Glenrothes **L** Levenmouth **R** Rosyth

Course listings and campus locations are correct at time of printing, but may be subject to change. Please visit our website for the most up-to-date course information.

Please note: due to the opening of our new campus in Dunfermline, it is possible that students studying at the current Dunfermline campus may relocate to the new campus part way through the academic year 2025/26. This information will be communicated to all course applicants and available on our website once confirmed.

STUDENT STORY

Malgorzata Norberczuk

- National 5: English for Speakers of Other Languages

"I really recommend the high standards of a Fife College education.

I started out studying English, and then went on to study HNC 3D Interior Design which I really enjoyed."



ESOL Course Planner

Key:

Progression route
.....>

**Academies/
Community Classes**

Double
line box

College courses

Solid
line box

**School College
Partnership courses**

Filled
in box

**Courses share
progression options**

Dotted
line box

This planner shows possible routes of progression. For full entry requirements for each course, always check online.

SCQF LEVEL
2

SCQF LEVEL
3

Equivalent to National 4s
SCQF LEVEL
4

English for Speakers
of Other Languages
(ESOL): Beginners

English for Speakers
of Other Languages
(ESOL): Elementary

English for Speakers
of Other Languages
(ESOL): Part-time

National 4: English
for Speakers of
Other Languages
(ESOL)

Equivalent to National 5s

SCQF LEVEL

5

Equivalent to Highers

SCQF LEVEL

6

Equivalent to Year 1 at
University and Advanced Highers

SCQF LEVEL

7

Equivalent to Year 2
at University

SCQF LEVEL

8

Articulation to university

Fife College offers over 600 routes to a degree in partnership with a wide range of universities across Scotland and the UK.

These articulation routes, which are pathways between a full-time HNC or HND course to a degree course, are formally agreed between the College and the university to ensure a smooth transition to degree study.

This means that you could gain direct entry to year 2 at university from an HNC, and with an HND you could move straight to year 3.

Visit the degree pathways pages section of our website for further information.

National 5: English
for Speakers of
Other Languages
(ESOL)

Depending on your
level of English,
you can go on to
apply for a course
or degree at Fife
College

HAIR AND BEAUTY

Whether you dream of being a stylist, working in a spa or running your own salon, we have the course for you. Hugely popular and well-renowned for our first-class teaching and facilities, you can take your first step into the hair and beauty industry with one of our excellent courses.

Our courses are taught by fully-qualified, highly creative staff who have a wealth of professional and teaching experience. Whether you choose hairdressing, barbering, or beauty therapy, you will be working with a real-life business focus, providing treatments and services to clients who have booked appointments in our hair and beauty salons.

You'll learn the vital skills needed to work in the industry, such as delivering a high standard of customer service, as well as practical skills and knowledge of different treatments.

What kind of career could I have?

- Salon Manager
- Nail Technician
- Beauty Therapist
- Self-Employed Hairdresser
- Hair Stylist
- Barber
- Health Club Spa Manager
- Session Stylist
- And more...

What route can I take to my ideal career?

You can start at SCQF Level 4 (the equivalent to National 4s) and progress through to SCQF Level 7, or move into employment.

Visit fife.ac.uk/hair for more course details.



STUDENT STORY

Sumi Bhandari

- Intermediate Certificate: Popular Beauty Techniques
- NVQ Diploma: Beauty Therapy VTCT Level 2

Winning the Student of the Year Award at the College Development Network (CDN) Awards feels absolutely incredible. It's a recognition of all the effort and dedication I've put into my studies, and I'm so grateful for the support of my tutors.

I'm especially proud to be part of Fife College, the only college in Scotland to provide the Advanced Beauty course, which offers a great chance for those who have completed a Beauty course before and want to advance their skills for careers as Aesthetic Skin Specialists.

"I hope my achievement inspires others to pursue their passions and take advantage of the amazing courses available."



Hair and Beauty		Full-time	Part-time
SCQF LEVEL	Beauty and Make-up Artistry		
4	VTCT Level 1: Diploma in Beauty Therapy	K L D	
5	Intermediate Certificate: Beauty and Make-Up	K	
5	VTCT Level 2: Diploma in Beauty Therapy	K L D	
5	VTCT Level 2: Diploma in Complementary Therapies	D K	
5	VTCT Level 2: Diploma in Nail Services	D K	
6	VTCT Level 3: Diploma in Beauty Therapy Massage	D K	
6	VTCT Level 3: Diploma in Nail Services	K	
7	VTCT Level 4: Advanced Beauty Techniques	K	
SCQF LEVEL	Hairdressing and Barbering		
4	Certificate: Develop Barbering Skills		D
4	VTCT Level 1: Diploma in Hairdressing	D K	
5	SVQ Level 2: Barbering	K	
5	VTCT Level 2: Diploma in Hairdressing	D K	
6	SVQ Level 3: Barbering	K	
6	SVQ Level 3: Hairdressing	K	

KEY  Dunfermline  Kirkcaldy  Glenrothes  Levenmouth  Rosyth

School College Partnership courses offered within Hair and Beauty include:

- Introduction to the Hair and Beauty Sector VTCT Entry Certificate

Please note: School College Partnership courses vary by High School. Please check with your own High School to see which courses are available.

Course listings and campus locations are correct at time of printing, but may be subject to change. Please visit our website for the most up-to-date course information.

Please note: due to the opening of our new campus in Dunfermline, it is possible that students studying at the current Dunfermline campus may relocate to the new campus part way through the academic year 2025/26. This information will be communicated to all course applicants and available on our website once confirmed.

Hair and Beauty Course Planner

Equivalent to National 4s

SCQF LEVEL

4

Equivalent to National 5s

SCQF LEVEL

5

Equivalent to Highers

SCQF LEVEL

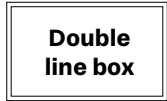
6

Key:

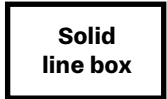
Progression route



Academies/ Community Classes



College courses



School College Partnership courses



Courses share progression options



This planner shows possible routes of progression. For full entry requirements for each course, always check online.

VTCT Level 1:
Diploma in Beauty
Therapy

Introduction to the
Hair and Beauty
Sector
VTCT Entry
Certificate
(School College
Partnership)

VTCT Level 1:
Diploma in
Hairdressing

Certificate: Develop
Barbering Skills

Intermediate
Certificate: Beauty
and Make-up

VTCT Level 2:
Diploma in
Complementary
Therapies

VTCT Level 2:
Diploma in Beauty
Therapy

VTCT Level 2:
Diploma in Nail
Services

SVQ: Barbering
Level 2

VTCT Level 2:
Diploma in
Hairdressing

Modern
Apprenticeship:
Hairdressing
Level 2

Modern
Apprenticeship:
Barbering

VTCT Level 3:
Diploma in Beauty
Therapy Massage

VTCT Level 3:
Diploma in Nail
Services

SVQ: Barbering
Level 3

SVQ: Hairdressing
Level 3

Modern
Apprenticeship:
Hairdressing
Level 3

Equivalent to Year 1 at University and Advanced Highers

SCQF LEVEL

7

Equivalent to Year 2 at University

SCQF LEVEL

8

Equivalent to Year 3 at University

SCQF LEVEL

9

Equivalent to Year 4 (Honours) at University

SCQF LEVEL

10

Articulation to university

Fife College offers over 600 routes to a degree in partnership with a wide range of universities across Scotland and the UK.

These articulation routes, which are pathways between a full-time HNC or HND course to a degree course, are formally agreed between the College and the university to ensure a smooth transition to degree study.

This means that you could gain direct entry to year 2 at university from an HNC, and with an HND you could move straight to year 3.

Visit the degree pathways pages section of our website for further information.

VTCT Level 4:
Advanced Beauty
Techniques

HEALTH CARE, SOCIAL SERVICES AND LIFE SCIENCES

Working in Health Care and Social Services is a calling unlike any other. You're not just choosing a career, you're becoming a frontline hero, dedicated to making a real difference every day in the lives of society's most vulnerable individuals. Whether you see yourself as a compassionate nurse, a dedicated youth worker, a proactive housing officer, or a transformative social worker, your knowledge and skills will serve as catalysts for positive change.

At Fife College, we offer a wide range of Health and Social Care courses, catering to individuals at various stages of their career journey. From introductory certificates to advanced HNCs, HNDs, and degrees, our courses equip you with not just the knowledge but also the practical work experience necessary to kickstart your rewarding career.

Even if you're already working in the care industry, our flexible work-based and part-time study options are designed to fit with your work and family commitments.

What kind of career could I have?

- Care Home Practitioner
- Adult Nurse
- Children's Nurse
- Community Development Worker
- Counsellor
- Additional Support Needs Teacher
- Housing Officer
- Project Worker
- Residential Child Care Support Worker
- Social Worker
- Support Worker
- Youth Worker
- And more...

What route can I take to my ideal career?

You can start at SCQF Level 4 (the equivalent to National 4s) and progress through HNC/HND and on to year 2/3 of a degree at Fife College or one of our partner universities, or move into employment.

Visit fife.ac.uk/care for more course details.



Life Sciences

In the world of science, not everyone wears a white lab coat. This dynamic field offers an range of different pathways, each leading to a world of fantastic career opportunities. From the intricate workings of technology to the profound discoveries in medicine, scientists play an indispensable role in shaping our understanding of the world.

At Fife College, we offer courses and qualifications designed to empower you with core skills, theoretical and practical knowledge. These are the core building blocks to fuel your interest and passion in this subject area, which will then help guide you towards a successful career.

What kind of career could I have?

- Biomedical Scientist
- Research Assistant
- Laboratory Assistant
- Technical Apprentice
- And more...

What route could I take to my ideal career?

You can start at SCQF Level 5 (the equivalent of National 5s) and progress through HNC/ HND then on to year 2 or 3 of a degree at one of our partner universities or move into employment.

Visit fife.ac.uk/science for more course details.



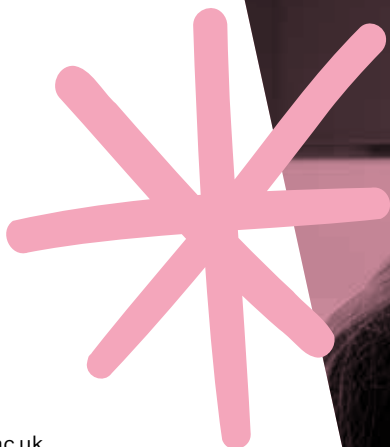
STUDENT STORY

Kayla Mason

- HNC: Applied Sciences

I chose to study HNC: Applied Sciences as I always liked science, so it would let me explore different avenues. I've really enjoyed the practical side of the course. You get to do a lot of lab work and things you never get to experience at school.

The environment is very welcoming at Fife College. It's quite small classes which is really good. You get to properly know the people you're with. After this year, I'm going to Dundee University to do Child and Mental Health Nursing.



"I was completely unsure what I wanted to do after S6 - now I'm excited for the next stage!"

Health Care, Social Services and Life Sciences

Full-time

Part-time

Distance Learning

SCQF LEVEL	Health Care and Social Services	Full-time	Part-time	Distance Learning
4	Certificate: Start Here for Care and Social Care		G	
4	Healthcare Pathway		L	
5	Intermediate Certificate: Child, Health and Social Care	D G K L		
6	Advanced Certificate: Health and Social Care (Access to Nursing and Care HNCs)	D G K		
6	Advanced Certificate: Social Services and Healthcare (inc. SVQ 2)	K		
6	Advanced Certificate: SWAP Access to Health and Life Sciences	D		
6	Advanced Certificate: SWAP Access to Nursing	D G K		
7	HNC: Additional Support Needs: Supporting the Individual Distance	K		●
7	HNC: Counselling	K	K	
7	HNC: Healthcare Practice	D G		
7	HNC: Healthcare Practice (Endorsed Route)			●
7	HNC: Social Services	K		●
7	HNC: Working with Communities		K	
8	HND: Additional Support Needs – Managing and Supporting the Services	K		
8	HND: Counselling		K	
9	BA: Inclusion and Support in Society	D		
10	BA (Hons): Inclusion and Support in Society	D		
SCQF LEVEL Life Science				
5	National Certificate: Applied Science	G		
5	Preparation for National 5: Biology		D	
6	Advanced Certificate: SWAP Access to Health and Life Sciences	D		
6	Advanced Higher Preparation: Chemistry		G	
6	National Certificate: Applied Sciences	G		
6	Preparation for Higher: Human Biology		D	
7	HNC: Applied Sciences (Biology)	D G		
8	HND: Applied Biological Sciences	G		

KEY **D** Dunfermline **K** Kirkcaldy **G** Glenrothes **L** Levenmouth **R** Rosyth

Your part-time study options within Health and Social Care:

- Healthcare Support Worker Underpinning Knowledge Level 5
- SVQ: Social Services and Healthcare SCQF Level 6
- SVQ: Social Services (Children and Young People) SCQF Level 6
- Professional Development Award: Technology Enabled Care SCQF Level 7
- Professional Development Award: Administration of Medication SCQF Level 7
- Professional Development Award: Health and Social Care Supervision SCQF Level 7
- SVQ: Social Services and Healthcare SCQF Level 7
- SVQ: Social Services and Health Care (Adults) SCQF Level 7
- SVQ: Social Services (Children and Young People) SCQF Level 7
- Professional Development Award: Acute and Community Care SCQF Level 8
- Professional Development Award: Promoting Enhanced Professional Practice – (NHS) SCQF Level 8
- SVQ: Social Services and Healthcare SCQF Level 9
- SVQ: Social Services and Health Care (Adults) SCQF Level 9
- SVQ: Social Services (Children and Young People) SCQF Level 9
- SVQ: Care Services Leadership and Management SCQF Level 10

Your part-time study options within Life Sciences:

- Introduction to Science SCQF Level 4 (Short Course)
- Intermediate Certificate: Introductory Biology SCQF Level 4
- Medical Terminology SCQF Level 5
- Preparation for National 5: Biology SCQF Level 5
- Advanced Higher Preparation: Biology SCQF Level 6
- Advanced Higher Preparation: Chemistry SCQF Level 6
- CSI Fife SCQF Level 6
- Preparation for Higher: Human Biology SCQF Level 6
- Professional Development Award: Pharmacy SCQF Level 7

School College Partnership courses offered within Health and Social Care include:

- Healthcare Pathway SCQF Level 5

School College Partnership courses offered within Life Sciences include:

- Foundation Apprenticeship: Scientific Technologies SCQF Level 6
- National Progression Award: Laboratory Sciences

Course listings and campus locations are correct at time of printing, but may be subject to change. Please visit our website for the most up-to-date course information.

Please note: due to the opening of our new campus in Dunfermline, it is possible that students studying at the current Dunfermline campus may relocate to the new campus part way through the academic year 2025/26. This information will be communicated to all course applicants and available on our website once confirmed.

Health Care and Social Services Course Planner

Equivalent to National 4s

SCQF LEVEL

4

Equivalent to National 5s

SCQF LEVEL

5

Equivalent to Highers

SCQF LEVEL

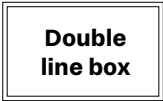
6

Key:

Progression route



Academies/ Community Classes



College courses



School College Partnership courses



Courses share progression options



This planner shows possible routes of progression. For full entry requirements for each course, always check online.

Certificate: Start Here for Care and Social Care

Healthcare Pathway

Intermediate Certificate: Child, Health and Social Care

Advanced Certificate: Social Services and Healthcare

Advanced Certificate: Health and Social Care (Access to Nursing and Care HNCs)

Advanced Certificate: Introduction to Counselling Skills (Part-time)

Advanced Certificate: SWAP Access to Health and Life Sciences

Advanced Certificate: SWAP Access to Nursing

Modern Apprenticeship: Social Services and Healthcare

Equivalent to Year 1 at University and Advanced Highers

SCQF LEVEL

7

Equivalent to Year 2 at University

SCQF LEVEL

8

Equivalent to Year 3 at University

SCQF LEVEL

9

Equivalent to Year 4 (Honours) at University

SCQF LEVEL

10

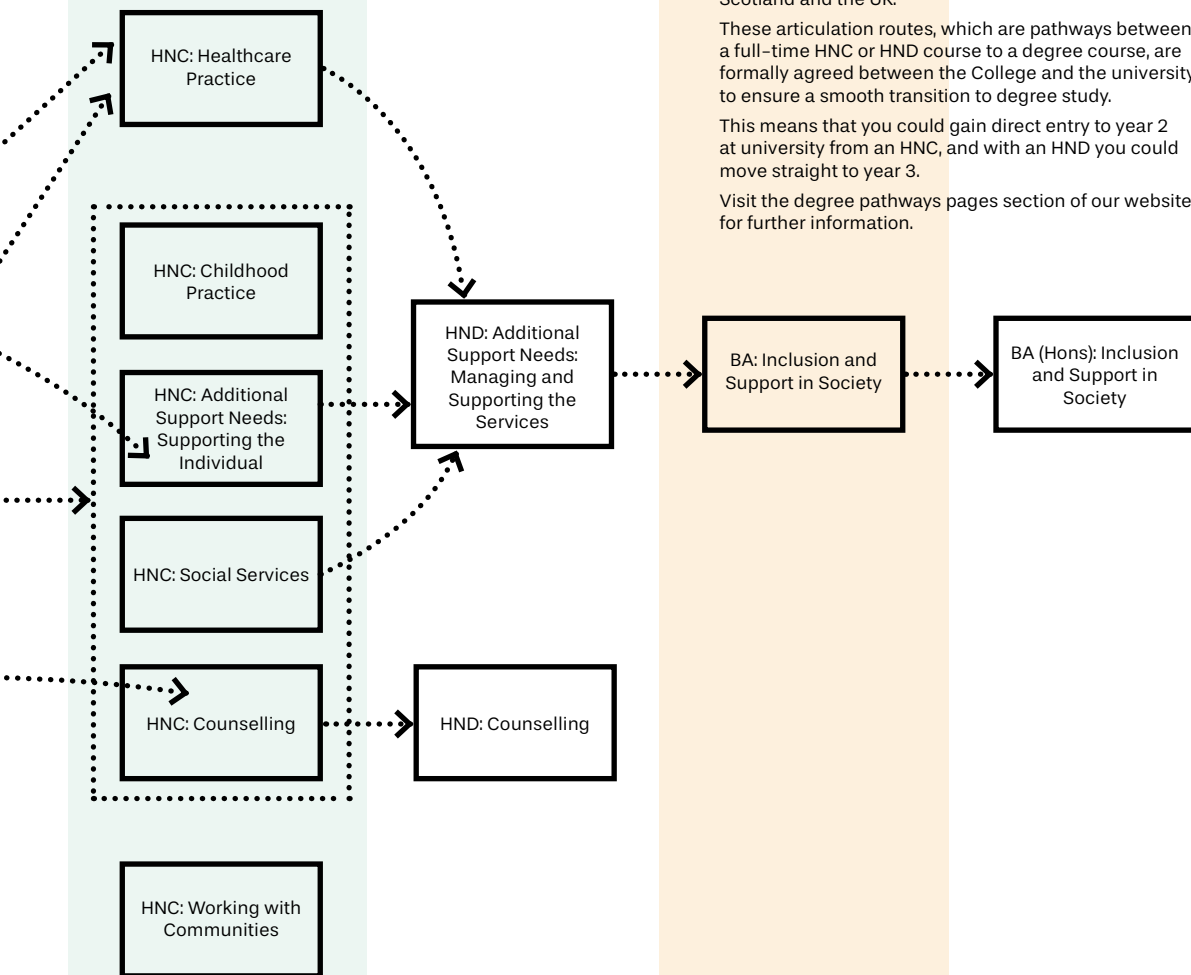
Articulation to university

Fife College offers over 600 routes to a degree in partnership with a wide range of universities across Scotland and the UK.

These articulation routes, which are pathways between a full-time HNC or HND course to a degree course, are formally agreed between the College and the university to ensure a smooth transition to degree study.

This means that you could gain direct entry to year 2 at university from an HNC, and with an HND you could move straight to year 3.

Visit the degree pathways pages section of our website for further information.



Life Sciences Course Planner

Equivalent to National 4s

SCQF LEVEL

4

Equivalent to National 5s

SCQF LEVEL

5

Equivalent to Highers

SCQF LEVEL

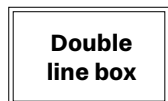
6

Key:

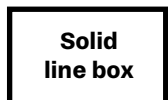
Progression route



Academies/ Community Classes



College courses



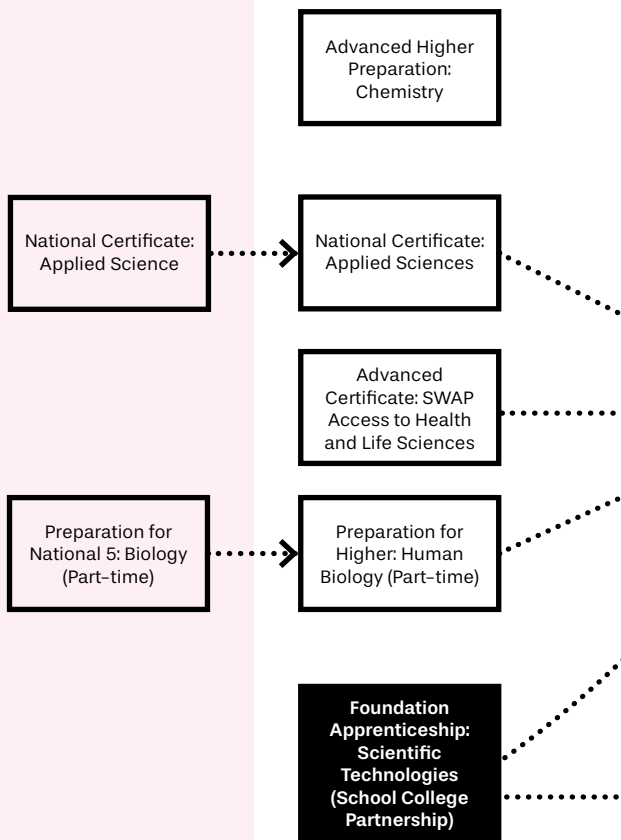
School College Partnership courses



Courses share progression options



This planner shows possible routes of progression. For full entry requirements for each course, always check online.



Equivalent to Year 1 at University and Advanced Highers

SCQF LEVEL

7

Equivalent to Year 2 at University

SCQF LEVEL

8

Equivalent to Year 3 at University

SCQF LEVEL

9

Equivalent to Year 4 (Honours) at University

SCQF LEVEL

10

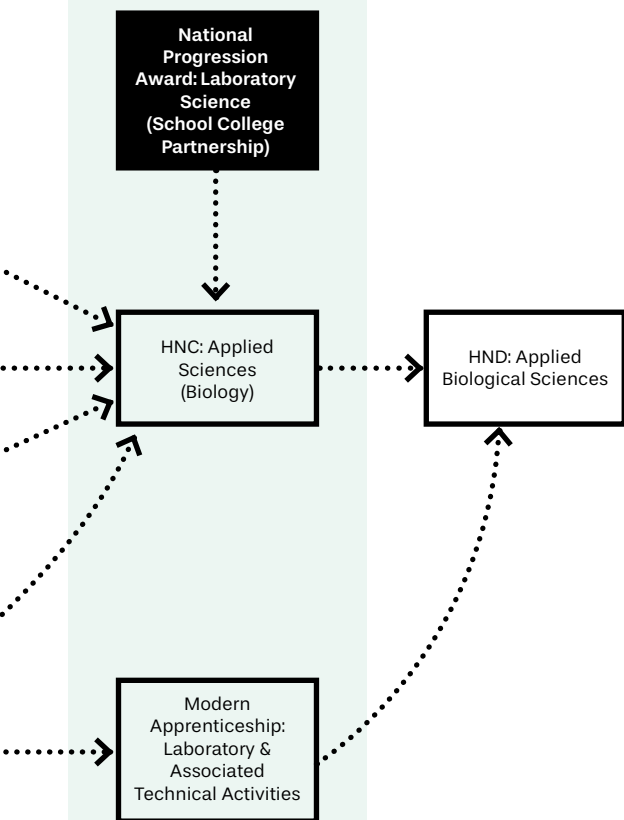
Articulation to university

Fife College offers over 600 routes to a degree in partnership with a wide range of universities across Scotland and the UK.

These articulation routes, which are pathways between a full-time HNC or HND course to a degree course, are formally agreed between the College and the university to ensure a smooth transition to degree study.

This means that you could gain direct entry to year 2 at university from an HNC, and with an HND you could move straight to year 3.

Visit the degree pathways pages section of our website for further information.



LOCAL OUTREACH LEARNING



As part of our commitment to the communities we serve, we offer lots of courses in local venues across Fife through our Local Outreach Learning programme, which can help you improve your skills for learning, work and life.

Our courses allow you to study somewhere close to home and give you the introductory level qualifications you need to get on to further courses. You can also get help with employability skills, as well as support and advice on how to achieve your job goals. Or you can just learn new skills and gain experience in topics you're interested in.

Some classes are delivered in partnership with Fife Council and our other partners in a relaxed, informal and supportive environment with experienced staff on hand to help you take the next step. You might even be eligible for assistance with childcare and travel costs when you attend these courses.

Visit fife.ac.uk/local for more course details.



STUDENT STORY

Kathleen Farrell

- Advanced Certificate: SWAP Access to Arts, Humanities and Primary Education

I started studying with Fife College on a community-based adult learning course (Step In) course at Valleyfield Community Centre, which I found out about through a cookery class that I took my granddaughter to.

I really enjoyed it, I managed to get National 5s in Numeracy and English, and I thought to myself – I can really do this!

I'm currently doing a SWAP course, which entails psychology, criminology, sociology, history, English, and Maths, which I never thought I would be able to manage in 100 years!



"I would say, if you're any way unsure, put your doubts away - just come!"

SCQF LEVEL	Local Outreach Learning	Full-time	Part-time
3	Step In		D G L
3/4	King's Trust Certificate: Employability and Personal Development		D G
4	Certificate: Skill Up		D G L K
4	Step Up		D G L

KEY **D** Dunfermline **K** Kirkcaldy **G** Glenrothes **L** Levenmouth **R** Rosyth



Course listings and campus locations are correct at time of printing, but may be subject to change. Please visit our website for the most up-to-date course information.

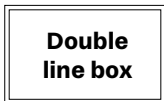
Please note: due to the opening of our new campus in Dunfermline, it is possible that students studying at the current Dunfermline campus may relocate to the new campus part way through the academic year 2025/26. This information will be communicated to all course applicants and available on our website once confirmed.

Local Outreach Learning Course Planner

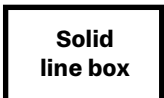
Key:

Progression route
.....>

**Academies/
Community Classes**



College courses



School College Partnership courses



Courses share progression options



This planner shows possible routes of progression. For full entry requirements for each course, always check online.

SCQF LEVEL

2

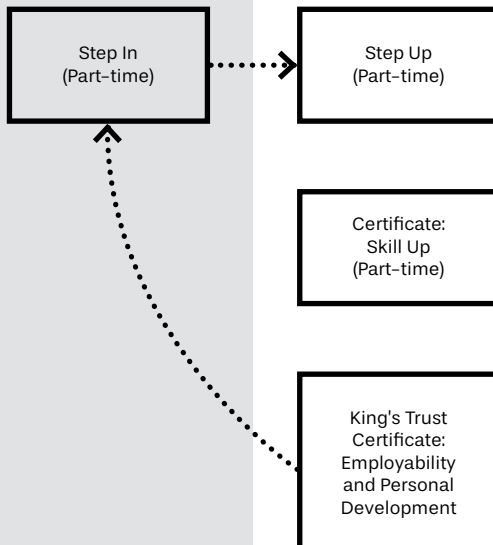
SCQF LEVEL

3

Equivalent to National 4s

SCQF LEVEL

4



Equivalent to National 5s

SCQF LEVEL

5

Equivalent to Highers

SCQF LEVEL

6

Equivalent to Year 1 at
University and Advanced Highers

SCQF LEVEL

7

Equivalent to Year 2
at University

SCQF LEVEL

8

Articulation to university

Fife College offers over 600 routes to a degree in partnership with a wide range of universities across Scotland and the UK.

These articulation routes, which are pathways between a full-time HNC or HND course to a degree course, are formally agreed between the College and the university to ensure a smooth transition to degree study.

This means that you could gain direct entry to year 2 at university from an HNC, and with an HND you could move straight to year 3.

Visit the degree pathways pages section of our website for further information.

MATHEMATICS, NUMERACY AND PHYSICS

Maths plays an important role in our lives and understanding how numbers work can have a hugely positive impact.

Our mathematics courses are the gateway to enhancing your core numeracy skills – skills that include problem-solving, logical reasoning, and analytical thinking, all highly valued across diverse employment sectors.

Gaining a qualification in mathematics not only provides you with essential life skills but also opens doors to careers in a wide variety of subject areas. It is often an essential requirement for entry into fields such as science, engineering, technology, computing, architecture, finance, and beyond.

Visit fife.ac.uk/maths for more course information.



SCQF LEVEL	Mathematics, Numeracy and Physics	Full-time	Part-time	Virtual Campus
4	National 4: Mathematics		D	
5	National 5 Maths: Intensive Revision Course		K L	
5	Preparation for National 5: Physics			●
5	Preparation for National 5: Mathematics		D	
6	Higher Maths: Intensive Revision Course		K L	
6	Preparation for Higher: Physics			●
6	Preparation for Higher: Mathematics		D	

KEY **D** Dunfermline **K** Kirkcaldy **G** Glenrothes **L** Levenmouth **R** Rosyth

School College Partnership courses offered within Mathematics, Numeracy and Physics include:

- Energy Storage Workshop
- Exploring Solar Power Workshop
- Hydro Power Workshop
- School Activity – Green Energy Box
- School Activity – Construction Box
- School Activity – Crystal Growing
- School Activity – Ecology Box
- STEM Challenge P6a – Grp A
- STEM Challenge P6b – Grp A
- STEM Challenge P7
- Wind Energy Workshop
- World of Work with Recycled Racers
- STEM Challenge S1
- STEM Challenge S2

Please note: School College Partnership courses vary by High School. Please check with your own High School to see which courses are available.

Course listings and campus locations are correct at time of printing, but may be subject to change. Please visit our website for the most up-to-date course information.

Please note: due to the opening of our new campus in Dunfermline, it is possible that students studying at the current Dunfermline campus may relocate to the new campus part way through the academic year 2025/26. This information will be communicated to all course applicants and available on our website once confirmed.

Mathematics, Numeracy and Physics Course Planner

Equivalent to National 4s

SCQF LEVEL

4

Equivalent to National 5s

SCQF LEVEL

5

Equivalent to Highers

SCQF LEVEL

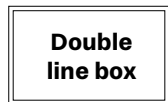
6

Key:

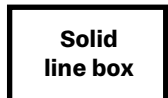
Progression route



Academies/ Community Classes



College courses



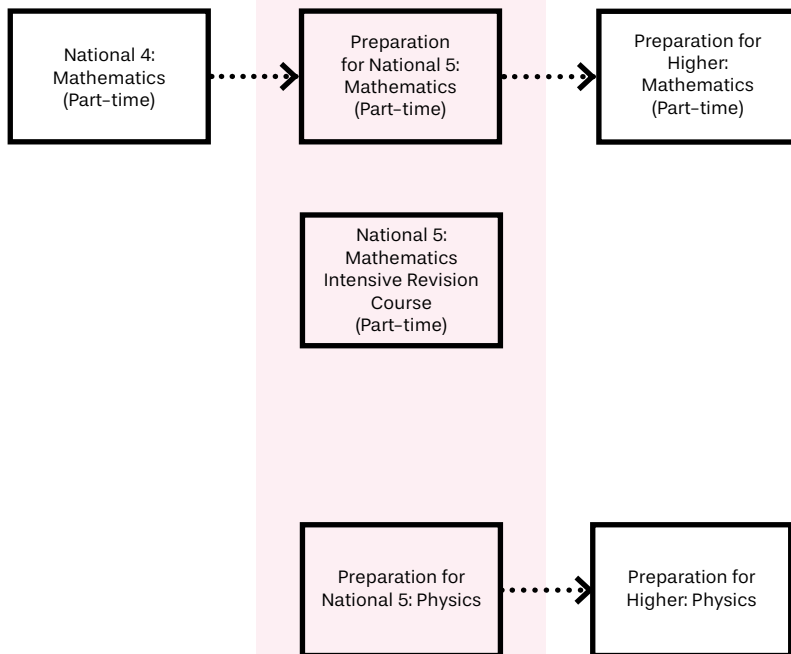
School College Partnership courses



Courses share progression options



This planner shows possible routes of progression. For full entry requirements for each course, always check online.



Equivalent to Year 1 at
University and Advanced Highers

SCQF LEVEL

7

Equivalent to Year 2
at University

SCQF LEVEL

8

Equivalent to Year 3
at University

SCQF LEVEL

9

Equivalent to Year 4
(Honours) at University

SCQF LEVEL

10

Articulation to university

Fife College offers over 600 routes to a degree in partnership with a wide range of universities across Scotland and the UK.

These articulation routes, which are pathways between a full-time HNC or HND course to a degree course, are formally agreed between the College and the university to ensure a smooth transition to degree study.

This means that you could gain direct entry to year 2 at university from an HNC, and with an HND you could move straight to year 3.

Visit the degree pathways pages section of our website for further information.

MEDIA PRODUCTION

Do you want to learn how to create better media content? Do you have an eye for photography? Interested in becoming a presenter, camera operator or vision mixer?

Can you see yourself in a recording studio, radio studio, design or TV studio? If so, then this area is for you!

You can study a range of creative media courses with us, from photography and screen production to podcasting, graphic design, and more. Our lecturing staff will apply all their industry knowledge and teaching experience to help you become a successful contributor and producer in the creative industries.

What kind of career could I have?

- Photographer
- TV or Film Producer
- Radio Presenter
- Social Media Content Creator
- Graphic Designer
- Podcast and YouTube Producer
- Production Assistant
- Camera Assistant/ Operator
- Sound Producer/ Music Technologist
- And many more...

What route could I take to my ideal career?

You can start at SCQF Level 4 (the equivalent to National 4s) and progress through HNC/ HND and on to year 3 of a degree with one of our partner universities, or move into employment.

What areas can I study?

- Media and Communication
- Photography
- Broadcast Media
- TV and Film Production
- Sound Production
- Visual Communication/Graphic Design

Visit fife.ac.uk/media for more course information.



SCQF LEVEL	Media Productions	Full-time	Part-time
4	Certificate: Broadcast Media		G
4	Certificate: Photography		D
5	Intermediate Certificate: Broadcast Media		G
5	Intermediate Certificate: Photography		D
6	Advanced Certificate: Broadcast Media	G	
6	Advanced Certificate: Photography	D	
6	Advanced Certificate: Sound Production	G	
7	HNC: Photography	D	
7	HNC: Sound Production	G	
7	HNC: Visual Communication	G	
7	HNC: Media and Communication	G	
8	HND: Media and Communication	G	
8	HND: Photography	D	
8	HND: Sound Production	G	
8	HND: Visual Communication	G	

KEY **D** Dunfermline **K** Kirkcaldy **G** Glenrothes **L** Levenmouth **R** Rosyth

School College Partnership courses offered within Media Productions include:

- Foundation Apprenticeship: Creative and Digital Media SCQF Level 6

Please note: School College Partnership courses vary by High School. Please check with your own High School to see which courses are available.

Your part-time study options within Media Productions:

- Creative Minds (Sept - June) SCQF Level 6
- Non-Advanced Creative Minds SCQF Level 6

Course listings and campus locations are correct at time of printing, but may be subject to change. Please visit our website for the most up-to-date course information.

Please note: due to the opening of our new campus in Dunfermline, it is possible that students studying at the current Dunfermline campus may relocate to the new campus part way through the academic year 2025/26. This information will be communicated to all course applicants and available on our website once confirmed.

STUDENT STORY



Jennifer McLuckie

- HNC: Photography
- HND: Photography

"I couldn't have gone on to degree level study if I hadn't done the two years here at Fife College."

When I turned 40, I decided that I wanted to do something with my life that I was passionate about and applied for the HNC Photography course. I didn't think I would get in, but I did!

After the HNC, I went on and did the HND, which was really interesting... all of the different topics we had to cover, location shoots, studio shoots, learning about lighting, and editing. I really got a lot from that year.

Since then, I've now graduated from Edinburgh College through Kingston School of Art, with the one-year BA Honours degree.



STUDENT STORY

Sharrell Carroll

- HNC: Media and Communications
- HND: Media and Communications

I am incredibly honoured and grateful to have been nominated in two categories for the Student Radio Awards 2024, for work that I produced while studying at the College and presenting on the College radio station, Boom Radio.

This recognition means the world to me, and I am truly thankful for the support and belief Fife College has shown in my journey.

"Being nominated for such a prestigious award feels surreal - like a dream come true."



Media Productions Course Planner

Equivalent to National 4s

SCQF LEVEL

4

Equivalent to National 5s

SCQF LEVEL

5

Equivalent to Highers

SCQF LEVEL

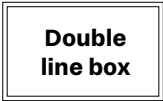
6

Key:

Progression route



Academies/ Community Classes



College courses



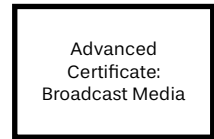
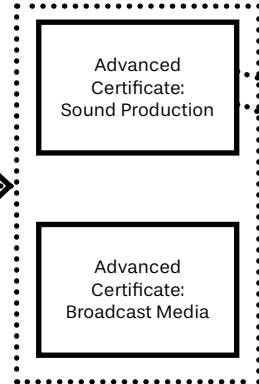
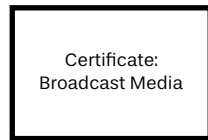
School College Partnership courses



Courses share progression options



This planner shows possible routes of progression. For full entry requirements for each course, always check online.



Equivalent to Year 1 at University and Advanced Highers

SCQF LEVEL

7

Equivalent to Year 2 at University

SCQF LEVEL

8

Equivalent to Year 3 at University

SCQF LEVEL

9

Equivalent to Year 4 (Honours) at University

SCQF LEVEL

10

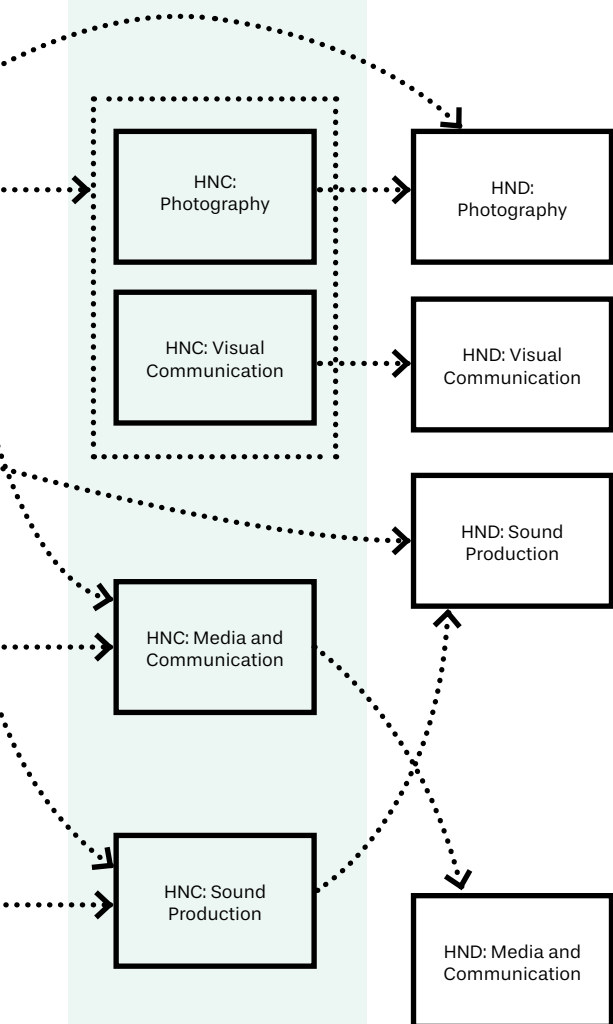
Articulation to university

Fife College offers over 600 routes to a degree in partnership with a wide range of universities across Scotland and the UK.

These articulation routes, which are pathways between a full-time HNC or HND course to a degree course, are formally agreed between the College and the university to ensure a smooth transition to degree study.

This means that you could gain direct entry to year 2 at university from an HNC, and with an HND you could move straight to year 3.

Visit the degree pathways pages section of our website for further information.



PERFORMING ARTS

Are you someone who is fascinated by theatre and enjoys putting on a show? Perhaps you dream of seeing your name in lights, or scrolling in the credits, or being highlighted in a theatre show programme? Then look no further! Our performing arts courses are for you!

Our highly experienced practitioners and lecturers offer a wide variety of specialisms in acting and theatre performance.

At Fife College you will benefit from many superb opportunities to get hands-on, real-life experience through work placements and external events, and you can even "earn while you learn" as part of our Studio 38 Youth Theatre team of workshop facilitators and support assistants.

What kind of career could I have?

- Actor/Performer
- Acting for stage/screen/TV/film
- Musical Theatre Performer
- And more...

What route can I take to my ideal career?

You can start at SCQF Level 5 (the equivalent to National 5s) and progress through HNC/HND and on to year 3 of a degree at one of our partner universities or move into employment.

Visit fife.ac.uk/perform for more course information.




STUDENT STORY

Katie Bryant

- HNC: Acting and Performance
- HND: Acting and Performance

In first year (HNC) you learn about the fundamentals of acting, so you learn voice, movement, acting and production. In second year (HND), you learn how to apply these skills to a performance. First year is more theory-based and second year is more practical. You get to do more performances and try out the skills you learnt in first year.

What I enjoy most about the course is working with my classmates. Performing back to your peers helps to build up your confidence, working up to performing in front of parents and other people from the college, especially for a big production.

A black and white photograph of Katie Bryant, a young woman with dark hair, wearing a school uniform consisting of a dark turtleneck and a light-colored varsity jacket with a large letter 'B' on the chest. She is sitting at a desk in a classroom or office setting, looking directly at the camera with a slight smile. The background shows a blurred classroom environment with desks and chairs.

"I feel like the step up from high school was definitely something I needed."

SCQF LEVEL	Performing Arts	Full-time	Part-time
5	Intermediate Certificate: Acting and Theatre Performance	K	
6	Advanced Certificate: Acting and Theatre Performance	K	
7	HNC: Acting and Performance	D K	
8	HND: Acting and Performance	D	

KEY  Dunfermline  Kirkcaldy  Glenrothes  Levenmouth  Rosyth

Your part-time study options within Performing Arts

- Youth Theatre 1 (ages 4 – 7 years)
- Youth Theatre 2 (ages 8 – 11 years)
- Youth Theatre 3 (ages 12 – 17 years)

Course listings and campus locations are correct at time of printing, but may be subject to change. Please visit our website for the most up-to-date course information.

Please note: due to the opening of our new campus in Dunfermline, it is possible that students studying at the current Dunfermline campus may relocate to the new campus part way through the academic year 2025/26. This information will be communicated to all course applicants and available on our website once confirmed.

Performing Arts Course Planner

Equivalent to National 4s

SCQF LEVEL

4

Equivalent to National 5s

SCQF LEVEL

5

Equivalent to Highers

SCQF LEVEL

6

Key:

Progression route



Academies/
Community Classes

Double
line box

College courses

Solid
line box

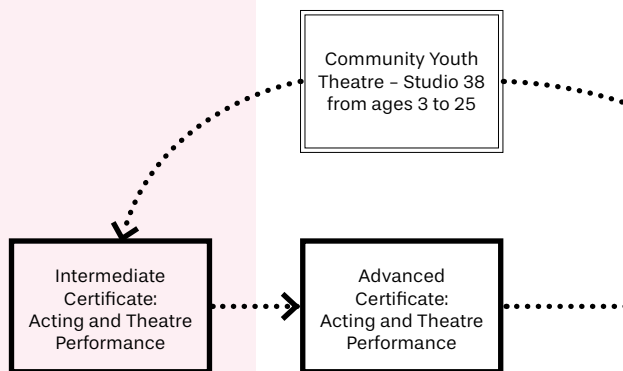
School College
Partnership courses

Filled
in box

Courses share
progression options

Dotted
line box

This planner shows possible routes of progression. For full entry requirements for each course, always check online.



Equivalent to Year 1 at University and Advanced Highers

SCQF LEVEL

7

Equivalent to Year 2 at University

SCQF LEVEL

8

Equivalent to Year 3 at University

SCQF LEVEL

9

Equivalent to Year 4 (Honours) at University

SCQF LEVEL

10

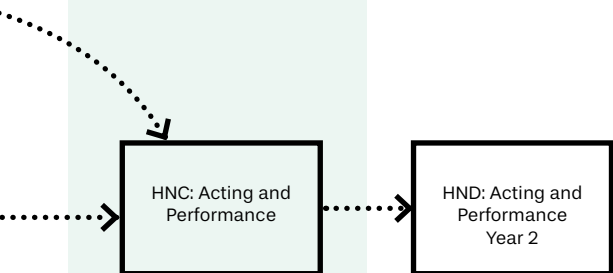
Articulation to university

Fife College offers over 600 routes to a degree in partnership with a wide range of universities across Scotland and the UK.

These articulation routes, which are pathways between a full-time HNC or HND course to a degree course, are formally agreed between the College and the university to ensure a smooth transition to degree study.

This means that you could gain direct entry to year 2 at university from an HNC, and with an HND you could move straight to year 3.

Visit the degree pathways pages section of our website for further information.



SOCIAL SCIENCES

If you want to understand more about how societies establish resilient structures to maintain social order as well as promote policy, democracy and equality – then our courses in social science are for you!

You will gain a vast range of knowledge and understanding of society, culture and human interaction and learn to perceive the world in a different way.

Whichever path you take, you will leave with a well-rounded transferable skillset, ready to specialise in your chosen area and find employment opportunities in private, public and voluntary sector organisations.

What kind of career could I have?

- Counsellor
- Human Resources
- Primary School Teacher
- Probation Officer
- Psychologist
- Public Services Worker
- Social Worker
- Additional Support Needs Teacher
- Community Educator
- And more...

What route could I take to my ideal career?

You can start at SCQF Level 5 (the equivalent to National 5) and progress through HNC/ HND then on to year 2 or 3 of a degree at Fife College or one of our partners universities, or move into employment.

Visit fife.ac.uk/social for more course information.



SCQF LEVEL	Social Sciences	Full-time	Part-time
5	Intermediate Certificate: Pathway to Further Study	D K	
5	National Certificate: Pathway to Social Sciences	D K	
6	Advanced Certificate: Pathway to Social Sciences	D K	
7	HNC: Social Sciences	D K	
8	HND: Social Sciences	K	
9	BA: Inclusion and Support in Society	D	
10	BA (Hons): Inclusion and Support in Society	D	
10	BA (Hons): Social Science (OU)		D

KEY  Dunfermline  Kirkcaldy  Glenrothes  Levenmouth  Rosyth

School College Partnership courses offered within Social Sciences include:

- Introduction to Criminology SCQF Level 5
- National Progression Award: Criminology SCQF Level 5

Please note: School College Partnership courses vary by High School. Please check with your own High School to see which courses are available.

Your part-time study options within Social Sciences:

- Professional Development Award: Technology Enabled Care SCQF Level 8
- BA (Honours): Social Science (OU) SCQF Level 10

Course listings and campus locations are correct at time of printing, but may be subject to change. Please visit our website for the most up-to-date course information.

Please note: due to the opening of our new campus in Dunfermline, it is possible that students studying at the current Dunfermline campus may relocate to the new campus part way through the academic year 2025/26. This information will be communicated to all course applicants and available on our website once confirmed.

Social Sciences Course Planner

Equivalent to National 4s

SCQF LEVEL

4

Equivalent to National 5s

SCQF LEVEL

5

Equivalent to Highers

SCQF LEVEL

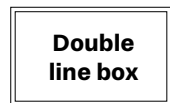
6

Key:

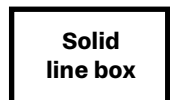
Progression route



Academies/ Community Classes



College courses



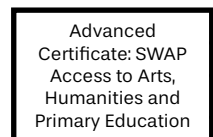
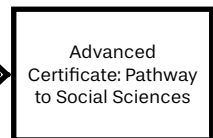
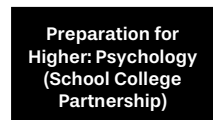
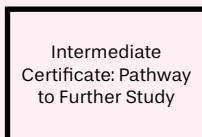
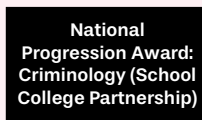
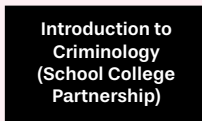
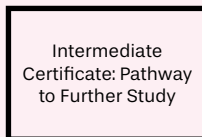
School College Partnership courses



Courses share progression options



This planner shows possible routes of progression. For full entry requirements for each course, always check online.



Equivalent to Year 1 at University and Advanced Highers

SCQF LEVEL

7

Equivalent to Year 2 at University

SCQF LEVEL

8

Equivalent to Year 3 at University

SCQF LEVEL

9

Equivalent to Year 4 (Honours) at University

SCQF LEVEL

10

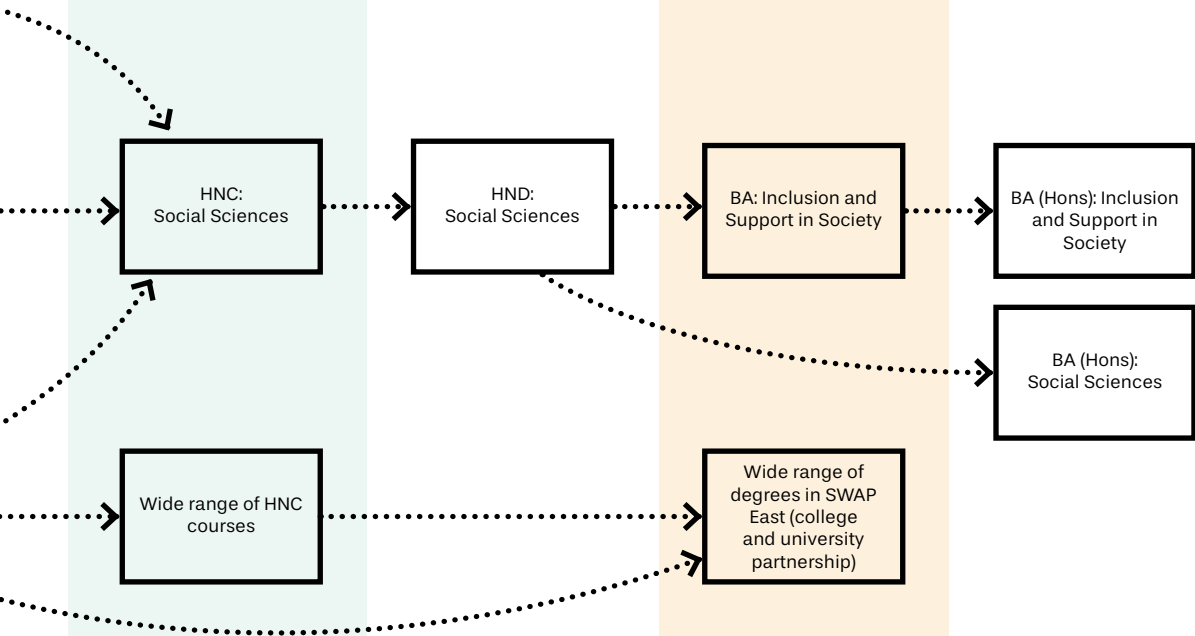
Articulation to university

Fife College offers over 600 routes to a degree in partnership with a wide range of universities across Scotland and the UK.

These articulation routes, which are pathways between a full-time HNC or HND course to a degree course, are formally agreed between the College and the university to ensure a smooth transition to degree study.

This means that you could gain direct entry to year 2 at university from an HNC, and with an HND you could move straight to year 3.

Visit the degree pathways pages section of our website for further information.



SPORT AND FITNESS

Transform your passion for sport, coaching and fitness into a rewarding career supporting and motivating others to develop and realise their potential.

Whether that means working with the next generation of sporting talent, contributing to local community initiatives, or supporting individuals to transform their lives, we have the course for you.

Our courses cover the fundamentals of the industry, as well as more advanced components designed to help fitness professionals take their career further.

What kind of career could I have?

- Personal Trainer
- Fitness Instructor
- Leisure Attendant
- Football Development Officer
- Lifestyle Coach
- Sports Coach
- Active Schools Coordinator
- And more...

What route can I take to my ideal career?

You can start at SCQF Level 5 (the equivalent to National 5s) and progress through HNC/HND then on to year 2 or 3 of a degree at university, or move into employment.

Visit fife.ac.uk/sport for more course information.



STUDENT STORY

Cameron Evans

- Advanced Certificate: Football Studies
- HNC: Sports Coaching and Development (Football Coaching)
- HND: Sports Coaching and Development

I started studying at Fife College on the Football Studies course, which was more of an introduction to football coaching, getting used to different sessions and just getting a wee bit of a feel for it. When I moved on to the HNC, we started doing more development work and looking at nutrition. Then the HND was more advanced.

After completing my studies, I went on to start full-time work at Raith Rovers Community Foundation. I began working with the Foundation when I was in my HNC class as I needed a placement. And from there, I've worked my way up to becoming a full-time Football Development Officer.

"It's been a great journey for me and I would 100% recommend that people apply!"



SCQF LEVEL	Sport and Fitness	Full-time	Part-time
5	Intermediate Certificate: Sport and Fitness	G K	
6	Advanced Certificate: Sport and Fitness (Fitness)	K	
6	Advanced Certificate: Sport and Fitness (Sports Coaching)	K	
6	Advanced Certificate: Football Studies	G	
7	HNC: Fitness, Health and Exercise	K	
7	HNC: Sports Coaching and Development (Football Coaching)	G	
7	HNC: Sports Coaching and Development (Multi Sport Coaching)	K	
8	HND: Sports Coaching and Development	K	
8	HND: Fitness, Health and Exercise	K	

KEY  Dunfermline  Kirkcaldy  Glenrothes  Levenmouth  Rosyth

School College Partnership courses offered within Sport and Fitness include:

- Fife Elite Football Academy Under 16s
- National Progression Award: Sports Development SCQF Level 6

Please note: School College Partnership courses vary by High School. Please check with your own High School to see which courses are available.

Your part-time study options within Sport and Fitness:

- Dunfermline Football Academy (DFA) under 18s

Course listings and campus locations are correct at time of printing, but may be subject to change. Please visit our website for the most up-to-date course information.

Please note: due to the opening of our new campus in Dunfermline, it is possible that students studying at the current Dunfermline campus may relocate to the new campus part way through the academic year 2025/26. This information will be communicated to all course applicants and available on our website once confirmed.

Sport and Fitness Course Planner

Equivalent to National 4s

SCQF LEVEL

4

Equivalent to National 5s

SCQF LEVEL

5

Equivalent to Highers

SCQF LEVEL

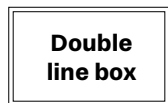
6

Key:

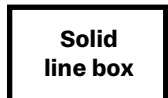
Progression route



Academies/ Community Classes



College courses



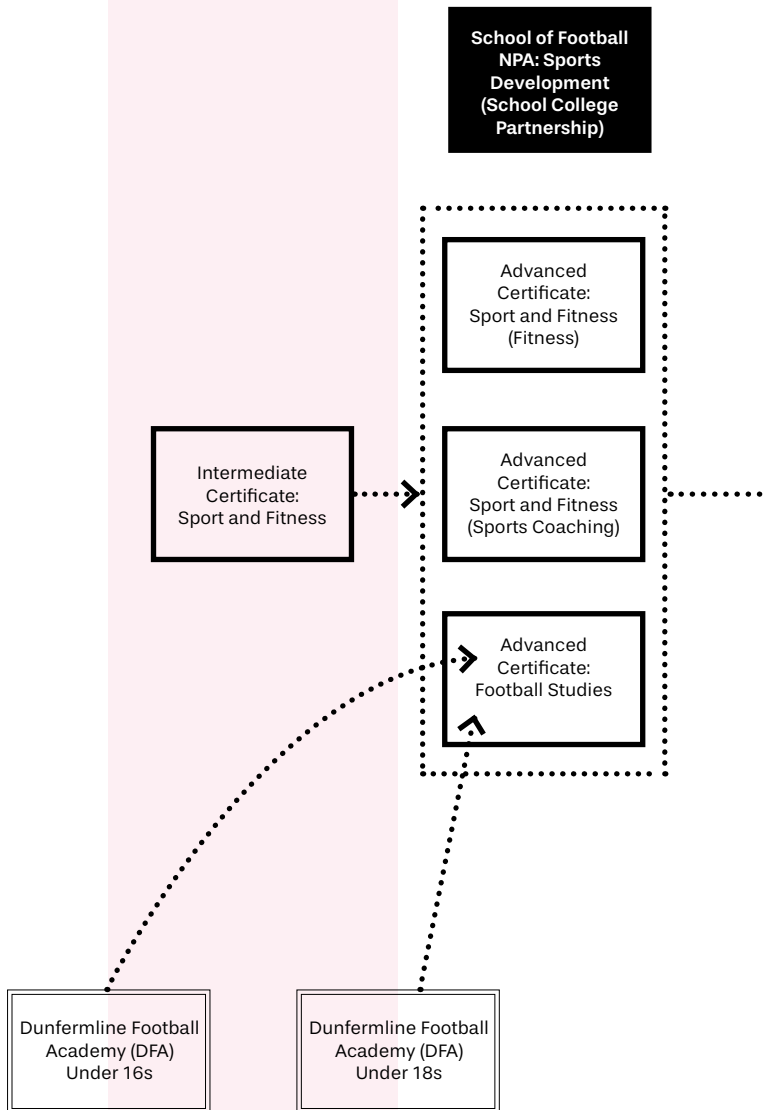
School College Partnership courses



Courses share progression options



This planner shows possible routes of progression. For full entry requirements for each course, always check online.



Equivalent to Year 1 at University and Advanced Highers

SCQF LEVEL

7

Equivalent to Year 2 at University

SCQF LEVEL

8

Equivalent to Year 3 at University

SCQF LEVEL

9

Equivalent to Year 4 (Honours) at University

SCQF LEVEL

10

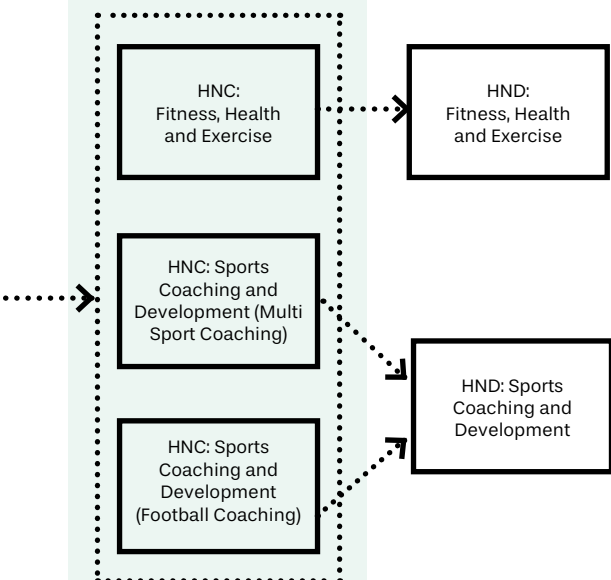
Articulation to university

Fife College offers over 600 routes to a degree in partnership with a wide range of universities across Scotland and the UK.

These articulation routes, which are pathways between a full-time HNC or HND course to a degree course, are formally agreed between the College and the university to ensure a smooth transition to degree study.

This means that you could gain direct entry to year 2 at university from an HNC, and with an HND you could move straight to year 3.

Visit the degree pathways pages section of our website for further information.



SUPPORTED LEARNING

Our Supported Learning courses offer you the opportunity to participate in a range of activities that promote learning, training and personal development in a supportive and engaging environment.

You might not know what the right career is for you yet. Or you might just want some extra skills to make a start in fulfilling your potential.

Our courses look to support you if you want to progress on to mainstream college courses, employment or supported meaningful activity in the community.

So, if you're unsure which direction you're heading in, or you're interested in gaining extra skills to prepare you for the challenges of life, we can show you the way!

Skills that you will develop include:

- Confidence
- Independence
- Teamwork
- Life Skills
- Employability

Visit fife.ac.uk/supported for more course information.



STUDENT STORY



- King's Trust Certificate: Employability and Personal Development (Previously the Prince's Trust)

"This course has been life-changing. I'm now applying for a pre-apprenticeship in electrical engineering and feel so much more confident in myself."

Prince's Trust Team 96 student

"I now have the confidence to apply for retail jobs, if it wasn't for this course, I wouldn't have the skills I need to be successful in getting a job."

Prince's Trust Team 96 student

SCQF LEVEL	Supported Learning	Full-time	Part-time
1	Award: Adult Learning and Transition	D G	
2	Intermediate Award: Personal Development	D G	
3	National Certificate: Personal and Vocational Skills	D G	
4	Certificate: Access to Employment	D G	
4	Certificate: Access to Further Education	D G	
4	Certificate: Building Sustainable Futures		D
4	Certificate: Passport to College	D G	
4	King's Trust Certificate: Employability and Personal Development	D G	

KEY D Dunfermline K Kirkcaldy G Glenrothes L Levenmouth R Rosyth

School College Partnership courses offered within Supported Learning include:

- Award: Next Steps: Skills for Life SCQF Level 1
- Next Steps: Skills Builder SCQF Level 2
- Next Steps: Further Education SCQF Level 3

Please note: School College Partnership courses vary by High School. Please check with your own High School to see which courses are available.

Your part-time study options within Supported Learning:

- Advanced Award: Cooking with Confidence

Course listings and campus locations are correct at time of printing, but may be subject to change. Please visit our website for the most up-to-date course information.

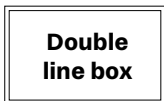
Please note: due to the opening of our new campus in Dunfermline, it is possible that students studying at the current Dunfermline campus may relocate to the new campus part way through the academic year 2025/26. This information will be communicated to all course applicants and available on our website once confirmed.

Supported Learning Course Planner

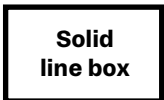
Key:

Progression route
.....>

**Academies/
Community Classes**



College courses



**School College
Partnership courses**



**Courses share
progression options**



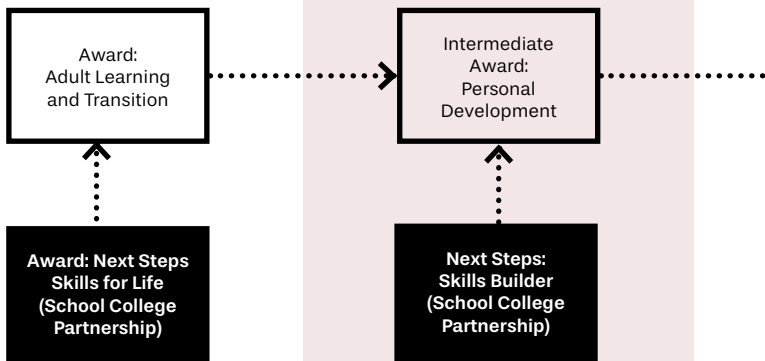
This planner shows possible routes of progression. For full entry requirements for each course, always check online.

SCQF LEVEL

1

SCQF LEVEL

2



SCQF LEVEL

3

Equivalent to National 4s

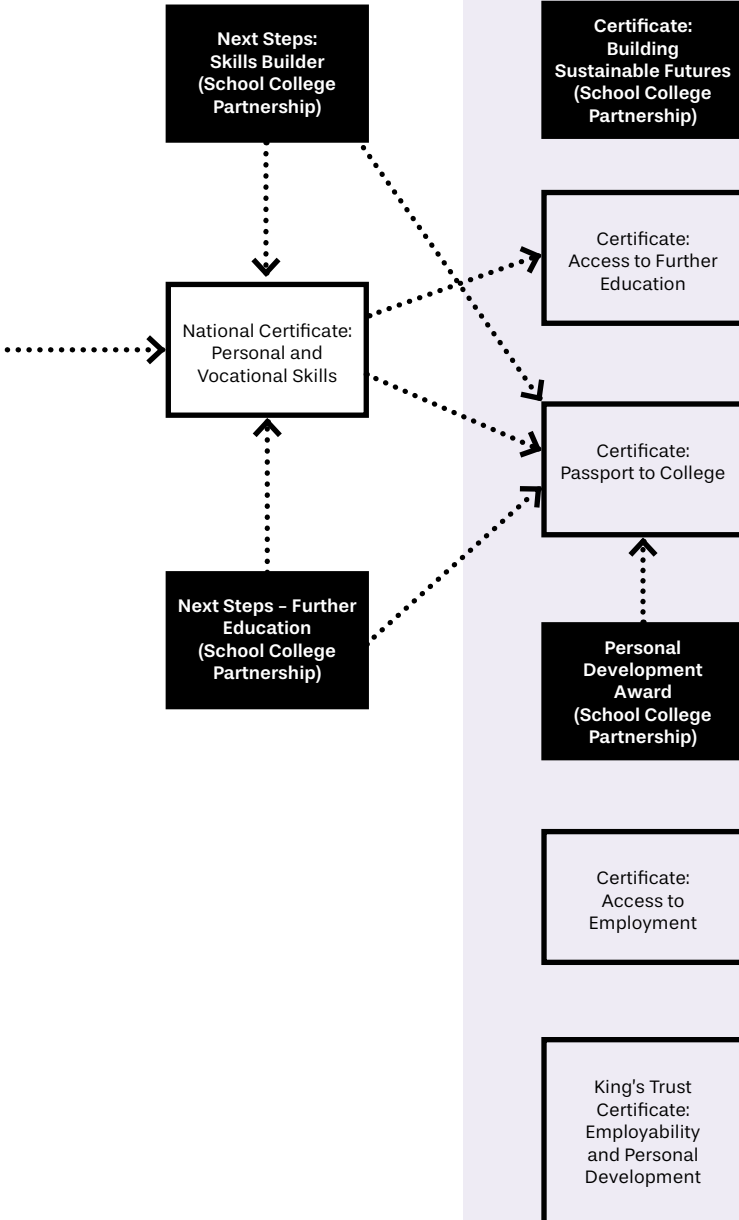
SCQF LEVEL

4

Equivalent to National 5s

SCQF LEVEL

5



TRAVEL AND TOURISM

Get started towards a fast-paced, dynamic career with worldwide opportunities whilst engaging with diverse clients by working in the industries of Travel, Tourism, and Events.

Immerse yourself in a wide range of cultures as well as embracing innovation to promote tourist destinations, lead events and create unique experiences for customers.

At Fife College, we are proud to be able to deliver first-class teaching to our students in the very best learning environment. Across each of our campuses, purpose-built training facilities are designed to provide an experience similar to industry. We also boast an industry-standard replica aircraft cabin and events spaces, which provide a fantastic way to consolidate your learning and develop your skills.

What kind of career could I have?

- Airline Cabin Crew
- Conference Manager
- Events Manager
- Exhibition Organiser
- Fundraiser
- Holiday Representative
- Hotel Receptionist
- Retail Operative
- And more...

What route can I take to my ideal career?

You can start at SCQF Level 4 (the equivalent to National 4s) and progress through HNC/HND. Additionally, potential progression routes on to second or third year of a relevant degree also exist.

Visit [fife.ac.uk/tourism](https://www.fife.ac.uk/tourism) for more course information.



STUDENT STORY

Katie Wansall

- Intermediate Certificate: Travel and Tourism

I'm really enjoying it and it's opening up different experiences to the Travel and Tourism industry. My course involves sustainability, customer service, tourist destinations, and cabin crew.

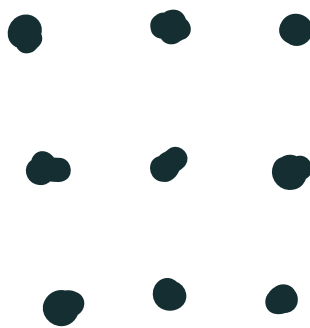
I'm learning about the different ways businesses will deal with customer service and customer service feedback, and how cabin crew works in doing services when you're in cabin crew.

"All your lecturers are super supportive and there are so many different experiences and opportunities you can go for during your course."



SCQF LEVEL	Travel and Tourism	Full-time	Part-time
4	Certificate: Skill up for Hospitality, Tourism and Events	K	
5	Intermediate Certificate: Passport to Employment in Travel and Tourism		K
5	Intermediate Certificate: Tourism, Events and Business		K
5	Intermediate Certificate: Travel and Tourism	K	
6	Advanced Certificate: Tourism, Events and Business	K	
7	HNC: Travel and Tourism	K	

KEY **D** Dunfermline **K** Kirkcaldy **G** Glenrothes **L** Levenmouth **R** Rosyth



Course listings and campus locations are correct at time of printing, but may be subject to change. Please visit our website for the most up-to-date course information.

Please note: due to the opening of our new campus in Dunfermline, it is possible that students studying at the current Dunfermline campus may relocate to the new campus part way through the academic year 2025/26. This information will be communicated to all course applicants and available on our website once confirmed.

Travel and Tourism Course Planner

Equivalent to National 4s

SCQF LEVEL

4

Equivalent to National 5s

SCQF LEVEL

5

Equivalent to Highers

SCQF LEVEL

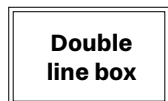
6

Key:

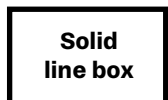
Progression route



Academies/ Community Classes



College courses



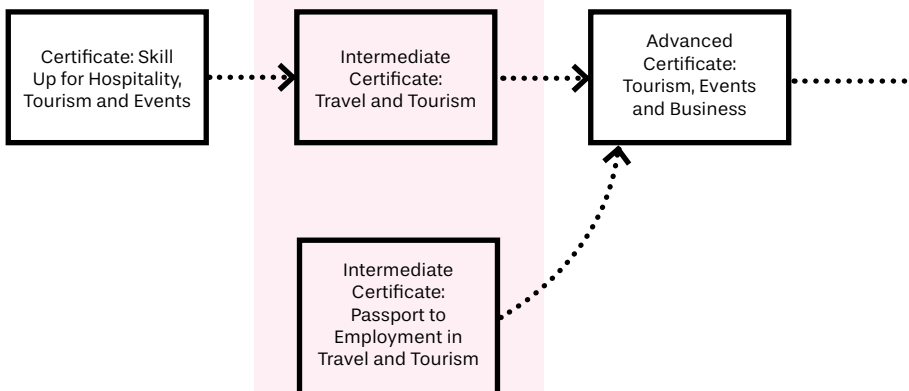
School College Partnership courses



Courses share progression options



This planner shows possible routes of progression. For full entry requirements for each course, always check online.



Equivalent to Year 1 at University and Advanced Highers

SCQF LEVEL

7

Equivalent to Year 2 at University

SCQF LEVEL

8

Equivalent to Year 3 at University

SCQF LEVEL

9

Equivalent to Year 4 (Honours) at University

SCQF LEVEL

10

Articulation to university

Fife College offers over 600 routes to a degree in partnership with a wide range of universities across Scotland and the UK.

These articulation routes, which are pathways between a full-time HNC or HND course to a degree course, are formally agreed between the College and the university to ensure a smooth transition to degree study.

This means that you could gain direct entry to year 2 at university from an HNC, and with an HND you could move straight to year 3.

Visit the degree pathways pages section of our website for further information.

HNC:
Travel and Tourism



SUPPORT SERVICES



Our aim is to support every individual who seeks to further their education, and to provide the best experience at college as we possibly can for you.

With that in mind, you'll find we have a wide range of student services available to support you during your studies, including:

Admissions

Looking to speak to someone about your course application? Our Admissions team can support you with information relating to course applications, course interviews, or continuing on for another year if you are an existing student. Call **0344 248 0115** or send them an email at **applications@fife.ac.uk**

Guidance

If you need to talk to someone in private about any issue during your time at Fife College, our Guidance team are here to help. We've got a supportive team who can be available at every campus and are always happy to chat, listen and help. See **[fife.ac.uk/guidance](https://www.fife.ac.uk/guidance)** for more details.

Health and Wellbeing

We are committed to the provision of high-quality support for students to safeguard physical, emotional and mental wellbeing. We have Health and Wellbeing advisors who can be available at each of our campuses so help is never far away.



Inclusion

Everyone is entitled to take part in learning and to realise their own potential. If there is anything which could get in the way of your learning and participation at college, or you encounter a problem with learning, a good starting point is to talk to a member of your Inclusion team.

We have an Inclusion team available at Student Learning Hubs on every campus where you can drop in for advice and support when needed. See fife.ac.uk/inclusion for more information.

Support for Care Experienced Students

If you are Care Experienced, our Student Experience Team are there to help and support you prior to coming to college and throughout your student journey. Head to fife.ac.uk/careexperienced to read more.

Cost of Living Support

We understand that the cost of living may be causing you some concern. However, we have a wide range of initiatives in place – including free breakfasts, free lunches, free use of digital devices and help with accessing hardship funds – to help your time at college be more affordable. See fife.ac.uk/cost-of-living for more details.

Attendance

We have a team of Attendance advisors who are here to help support you. They can work with you, your lecturers and your course tutors to make sure you are making it to all your classes or studying on your own so you don't fall behind on your course.

Student Employability

It's our job to get you ready for the job you want. And we've got a great track record in graduate employability. The real skills for real jobs that you will learn here, along with our industry and business links, mean you're in the best possible place to go after the best job for you. Our Student Employability team is on hand at every campus to give you relevant and practical employability skills. Visit fife.ac.uk/employability for more information.

Campus Libraries

On every campus you can find the quiet space you need to focus on your studies. Your student card will also be your library card and it will let you use our fantastic facilities and make the most of a huge range of resources. Along with books that help with every part of your curriculum, and space to study, you'll find WiFi and PC drop-in areas in every library.

Visit fife.ac.uk/libraries to read more.

Customer Services

Have you got questions but don't know who to ask? Our Front of House team are available on the main college number, by email, or at each of the reception desks with a friendly face. They can answer most questions – and if they can't, will always put you in touch with the person who can. Call **0344 248 0115** or email info@fife.ac.uk



FUNDING YOUR STUDIES



Money and funding are big considerations for most students. So if you need a hand deciding which is the right option for you to fund your studies, our Student Funding team is happy to chat and answer all your questions.

We advise that you apply for your funding as early as possible, and make sure everything is in place before the start of your course. Our website has all the information you need on all the different kinds of funding support available – from bursaries and student loans to scholarships, assistance funds, and allowances. Visit fife.ac.uk/funding for further information.

Depending on the level of course you study, you could be eligible for the following types of funding:

- Tuition fees paid
- Bursary
- Student loan
- Supplementary grants
- Travel expenses
- Assistance with childcare
- Disability support
- Individual Training Account (ITA)
- Council tax exemption/discount
- Assistance with rent/mortgage
- Part-time fee grant
- Care Experienced bursary



Did you know?

You can also make an appointment to see one of our Funding Team if you need assistance with your funding application or have any questions regarding how to fund your studies. These bookable appointments can be made by either calling the main college number on **0344 248 0115** or emailing **studentfunding@fife.ac.uk**



Adam Smith Scholarships

Part of Fife College

SCHOLARSHIPS

Scholarships available to help you with your studies

As a student at Fife College, you could benefit from our fantastic scholarship programme. We have around 30 scholarships available each year, funded by a range of companies and partners from Shell and Diageo to Ian Rankin and the Russell Trust.

Thanks to our Adam Smith Scholarships programme, our students get the chance to gain some much-needed extra cash to buy the resources they need such as laptops, software, equipment and books. There are some amazing mentoring and placement opportunities too, both in the UK and abroad, including the USA.

Our scholarship awards also look great on a CV, helping our students stand out from the crowd as they progress their studies or career.

In 2023/24, 293 deserving students were awarded scholarships, sharing funds of £172,000. Just think - next time, it could be you!

For further details head to fife.ac.uk/scholarships or email scholarships@fife.ac.uk

Since our scholarship programme began 27 years ago, we have awarded an amazing £1,386,896 to 2673 students





THE FCSA

Students' Association

**When you study
at Fife College,
you automatically
become a member
of one of the
best students'
associations in
Scotland!**

The Fife College Students' Association (FCSA) is here to support you in every aspect of your college experience. Whether you need help with something in class, are looking for a way to expand your skills, or want to do something fun the FCSA is there for you.

Do you enjoy helping others? With the FCSA you can help to improve the college experience for everyone. You can become a class rep to make sure your classmates are well informed about everything happening in the College. You can also volunteer with the FCSA to help deliver events that help others.

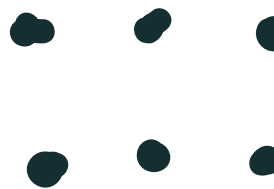
Looking for something to do outside of your studies? The FCSA organises a calendar of events that you can get involved with. Starting with Freshers in September, you'll find a variety of activities on offer, and tailored to fit around your timetable. We have loads of great clubs and societies, including Dungeons & Dragons, the FCSA Book Group, and the FCSA Video Gamers, as well as online competitions and contests. And if you are feeling competitive, we also have a wide range of sports clubs for you to join.

For more information, head to: fc-sa.net

INDEX

A		J	
About Us	04	Jewellery	32
Access to College	28	L	
Accounting	38	Legal Services	38
Administration	38	Life Sciences	82
Art and Design	32	Local Outreach Learning	90
Automotive Engineering	66	M	
B		Mathematics	94
Barbering	78	Management	38
Beauty	78	Mechanical Engineering	66
Built Environment	32	Manufacturing Engineering	66
Business	38	O	
C		Office Technologies	38
Childhood Studies	44	Our Campuses	8
Community-Based Adult Learning	90	Our Courses	26
Computing and Technologies	50	P	
Construction	56	Performing Arts	104
Creative Media	98	Physics	94
Culinary Arts	60	Police Studies	38
Cyber Security	50	Q	
D		Qualifications Explained	20
Degree Pathways	16	S	
Digital Technologies	50	Scholarships	128
E		Science	82
Electrical Engineering	66	Social Care	82
Engineering	66	Social Sciences	108
English for Speakers of other Languages (ESOL)	74	Sports Coaching	112
F		Sport and Fitness	112
Fabrication and Welding	66	Studying with us	12
FCSA – Your Students' Association	129	Support Services	124
Fitness	112	Supported Learning	116
Funding Your Studies	127	T	
Furniture	32	Ten Reasons to Study at Fife College	10
H		Travel and Tourism	120
Hairdressing	78	W	
Health and Social Care	82	What we offer	6
Hospitality	60	Y	
How to Apply	24	Your Study Options	12
I			
Interior Design	32		

Notes



A series of horizontal dotted lines for writing notes, spanning the width of the page.





Fife.ac.uk
0344 248 0115
info@fife.ac.uk



The information published in this guide was correct at the time of print.
For the most up-to-date information, you should always check our website.

Published December 2024
Fife College is a registered Scottish charity (No. SCO21203)